

---

**Product Name: Tau (phospho Thr181) Rabbit Polyclonal Antibody****Catalog #: APRab05531**

For research use only.

**Summary**

<b>Description</b>	Rabbit polyclonal Antibody
<b>Host</b>	Rabbit
<b>Application</b>	WB,ELISA
<b>Reactivity</b>	Human,Rat,Mouse
<b>Conjugation</b>	Unconjugated
<b>Modification</b>	Phosphorylated
<b>Isotype</b>	IgG
<b>Clonality</b>	Polyclonal
<b>Form</b>	Liquid
<b>Concentration</b>	1mg/ml
<b>Storage</b>	Aliquot and store at -20°C (valid for 12 months). Avoid freeze/thaw cycles.
<b>Shipping</b>	Ice bags
<b>Buffer</b>	Liquid in PBS containing 50% glycerol, 0.5% protective protein and 0.02% New type preservative N.
<b>Purification</b>	Affinity purification

**Application**

<b>Dilution Ratio</b>	WB 1:500-1:2000,ELISA 1:10000-1:20000
<b>Molecular Weight</b>	50-85kDa

**Antigen Information**

<b>Gene Name</b>	MAPT
<b>Alternative Names</b>	MAPT; MAPTL; MTBT1; TAU; Microtubule-associated protein tau; Neurofibrillary tangle protein; Paired helical filament-tau; PHF-tau
<b>Gene ID</b>	4137.0
<b>SwissProt ID</b>	P10636
<b>Immunogen</b>	The antiserum was produced against synthesized peptide derived from human Tau around the phosphorylation site of Thr181. AA range:471-520

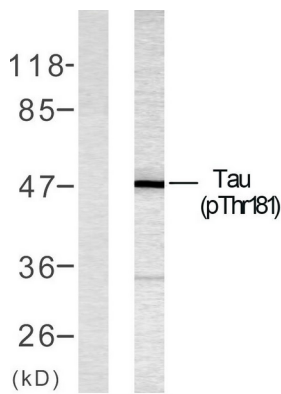
**Background**

This gene encodes the microtubule-associated protein tau (MAPT) whose transcript undergoes complex, regulated alternative splicing, giving rise to several mRNA species. MAPT transcripts are differentially expressed in the nervous system, depending on stage of neuronal maturation and neuron type. MAPT gene mutations have been associated with several neurodegenerative disorders such as Alzheimer's disease, Pick's disease, frontotemporal dementia, cortico-basal degeneration and progressive supranuclear palsy. [provided by RefSeq, Jul 2008], alternative products: Additional isoforms seem to exist. Isoforms differ from each other by the presence or absence of up to 5 of the 15 exons.

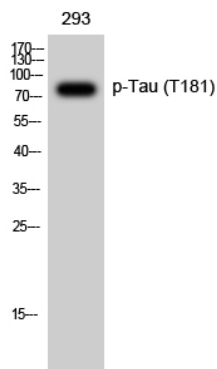
## Research Area

MAPK\_ERK\_Growth;MAPK\_G\_Protein;Alzheimer's disease;

## Image Data



Western blot analysis of lysates from mouse brain, using Tau (Phospho-Thr181) Antibody. The lane on the left is blocked with the phospho peptide.



Western Blot analysis of 293 cells using Phospho-Tau (T181) Polyclonal Antibody diluted at 1: 2000