

Product Name: Syndecan-4 (phospho Ser179) Rabbit Polyclonal Antibody**Catalog #: APRab05507**

For research use only.

Summary

Description	Rabbit polyclonal Antibody
Host	Rabbit
Application	IHC, ICC/IF, ELISA
Reactivity	Human, Mouse, Rat
Conjugation	Unconjugated
Modification	Phosphorylated
Isotype	IgG
Clonality	Polyclonal
Form	Liquid
Concentration	1mg/ml
Storage	Aliquot and store at -20°C (valid for 12 months). Avoid freeze/thaw cycles.
Shipping	Ice bags
Buffer	Liquid in PBS containing 50% glycerol, 0.5% protective protein and 0.02% New type preservative N.
Purification	Affinity purification

Application

Dilution Ratio IHC 1:100-1:300, ICC/IF 1:200-1:1000, ELISA 1:10000-1:20000

Molecular Weight

Antigen Information

Gene Name	SDC4
Alternative Names	SDC4; Syndecan-4; SYND4; Amphiglycan; Ryudocan core protein
Gene ID	6385.0
SwissProt ID	P31431
Immunogen	The antiserum was produced against synthesized peptide derived from human Syndecan4 around the phosphorylation site of Ser179. AA range:145-194

Background

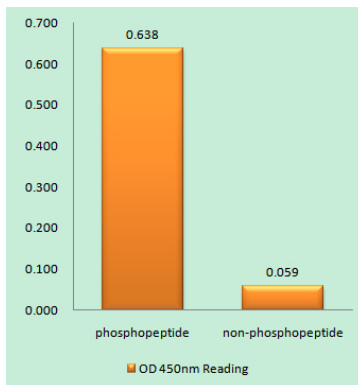
The protein encoded by this gene is a transmembrane (type I) heparan sulfate proteoglycan that functions as a receptor in

intracellular signaling. The encoded protein is found as a homodimer and is a member of the syndecan proteoglycan family. This gene is found on chromosome 20, while a pseudogene has been found on chromosome 22. [provided by RefSeq, Jul 2008],function:Cell surface proteoglycan that bears heparan sulfate.,function:Cell surface proteoglycan.,similarity:Belongs to the syndecan proteoglycan family.,subunit:Homodimer. Interacts with CDCP1, with GIPC PDZ domain and with NUDT16L1/SDOS (By similarity). Interacts with SDCBP.,tissue specificity:Expressed in epithelial and fibroblastic cells.,

Research Area

ECM-receptor interaction;Cell adhesion molecules (CAMs);

Image Data



Enzyme-Linked Immunosorbent Assay (Phospho-ELISA) for Immunogen Phosphopeptide (Phospho-left) and Non-Phosphopeptide (Phospho-right) , using Syndecan4 (Phospho-Ser179) Antibody