
Product Name: SSB (phospho Ser366) Rabbit Polyclonal Antibody**Catalog #: APRab05472**

For research use only.

Summary

Description	Rabbit polyclonal Antibody
Host	Rabbit
Application	WB,IHC,ICC/IF,ELISA
Reactivity	Human,Rat,Mouse
Conjugation	Unconjugated
Modification	Phosphorylated
Isotype	IgG
Clonality	Polyclonal
Form	Liquid
Concentration	1mg/ml
Storage	Aliquot and store at -20°C (valid for 12 months). Avoid freeze/thaw cycles.
Shipping	Ice bags
Buffer	Liquid in PBS containing 50% glycerol, 0.5% protective protein and 0.02% New type preservative N.
Purification	Affinity purification

Application

Dilution Ratio	WB 1:500-1:2000,IHC 1:100-1:300,ICC/IF 1:200-1:1000,ELISA 1:20000-1:40000
Molecular Weight	47kDa

Antigen Information

Gene Name	SSB
Alternative Names	SSB; Lupus La protein; La autoantigen; La ribonucleoprotein; Sjogren syndrome type B antigen; SS-B
Gene ID	6741.0
SwissProt ID	P05455
Immunogen	The antiserum was produced against synthesized peptide derived from human SSB around the phosphorylation site of Ser366. AA range:341-390

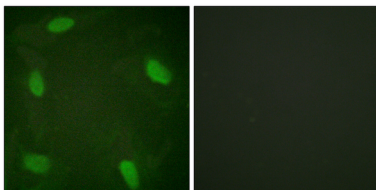
Background

Sjogren syndrome antigen B(SSB) Homo sapiens The protein encoded by this gene is involved in diverse aspects of RNA metabolism, including binding and protecting poly(U) termini of nascent RNA polymerase III transcripts from exonuclease digestion, processing 5' and 3' ends of pre-tRNA precursors, acting as an RNA chaperone, and binding viral RNAs associated with hepatitis C virus. Autoantibodies reacting with this protein are found in the sera of patients with Sjogren syndrome and systemic lupus erythematosus. Alternative promoter usage results in two different transcript variants which encode the same protein. [provided by RefSeq, Jun 2014],disease:Sera from patients with systemic lupus erythematosus (SLE) often contain antibodies that react with the normal cellular La protein as if this antigen was foreign.,function:La protein plays a role in the transcription of RNA polymerase III. It is most probably a transcription termination factor. Binds to the 3' termini of virtually all nascent polymerase III transcripts. It is associated with precursor forms of RNA polymerase III transcripts including tRNA and 4.5S, 5S, 7S, and 7-2 RNAs.,PTM:Phosphorylated. The phosphorylation sites are at the C-terminal part of the protein.,PTM:The N-terminus is blocked.,similarity:Contains 1 HTH La-type RNA-binding domain.,similarity:Contains 1 RRM (RNA recognition motif) domain.,subunit:Interacts with DDX15. May interact with RUFY1.,

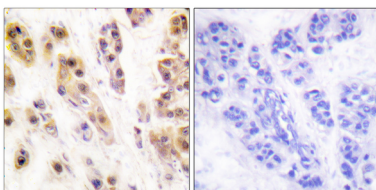
Research Area

Systemic lupus erythematosus;

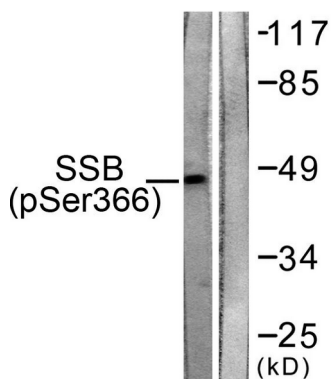
Image Data



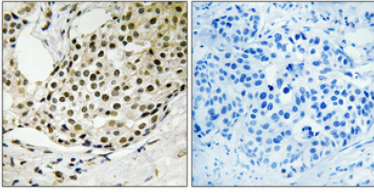
Immunofluorescence analysis of HeLa cells treated with Forskolin 40nM 30', using SSB (Phospho-Ser366) Antibody. The picture on the right is blocked with the phospho peptide.



Immunohistochemistry analysis of paraffin-embedded human breast carcinoma, using SSB (Phospho-Ser366) Antibody. The picture on the right is blocked with the phospho peptide.



Western blot analysis of lysates from 293 cells, using SSB (Phospho-Ser366) Antibody. The lane on the right is blocked with the phospho peptide.



Immunohistochemical analysis of paraffin-embedded Human breast cancer. Antibody was diluted at 1:100 (4°,overnight) . High-pressure and temperature Tris-EDTA,pH8.0 was used for antigen retrieval. Negative contrl (right) obtaned from antibody was pre-absorbed by immunogen peptide.