
Product Name: SRF (phospho Ser77) Rabbit Polyclonal Antibody**Catalog #: APRab05470**

For research use only.

Summary

Description	Rabbit polyclonal Antibody
Host	Rabbit
Application	WB,IHC,ICC/IF,ELISA
Reactivity	Human,Mouse
Conjugation	Unconjugated
Modification	Phosphorylated
Isotype	IgG
Clonality	Polyclonal
Form	Liquid
Concentration	1mg/ml
Storage	Aliquot and store at -20°C (valid for 12 months). Avoid freeze/thaw cycles.
Shipping	Ice bags
Buffer	Liquid in PBS containing 50% glycerol, 0.5% protective protein and 0.02% New type preservative N.
Purification	Affinity purification

Application

Dilution Ratio	WB 1:500-1:2000,IHC 1:100-1:300,ICC/IF 1:50-1:200,ELISA 1:20000-1:40000
Molecular Weight	52kDa

Antigen Information

Gene Name	SRF
Alternative Names	SRF; Serum response factor; SRF
Gene ID	6722.0
SwissProt ID	P11831
Immunogen	The antiserum was produced against synthesized peptide derived from human SRF around the phosphorylation site of Ser77. AA range:41-90

Background

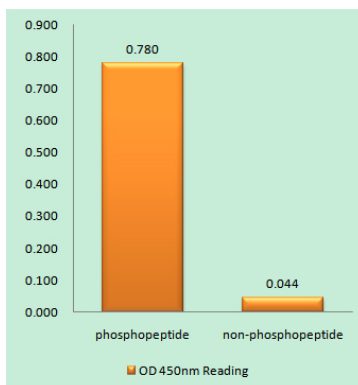
This gene encodes a ubiquitous nuclear protein that stimulates both cell proliferation and differentiation. It is a member of the

MADS (MCM1, Agamous, Deficiens, and SRF) box superfamily of transcription factors. This protein binds to the serum response element (SRE) in the promoter region of target genes. This protein regulates the activity of many immediate-early genes, for example c-fos, and thereby participates in cell cycle regulation, apoptosis, cell growth, and cell differentiation. This gene is the downstream target of many pathways; for example, the mitogen-activated protein kinase pathway (MAPK) that acts through the ternary complex factors (TCFs). Two transcript variants encoding different isoforms have been found for this gene. [provided by RefSeq, May 2014],function:SRF is a transcription factor that binds to the serum response element (SRE), a short sequence of dyad symmetry located 300 bp to the 5' of the site of transcription initiation of some genes (such as FOS). Required for cardiac differentiation and maturation.,PTM:Phosphorylated by PRKDC.,similarity:Contains 1 MADS-box domain.,subunit: Binds DNA as a multimer, probably a dimer. Interacts with MLLT7/FOXO4, NKX3A and SSRP1. Interacts with ARID2 and SRFBP1 (By similarity). Forms complexes with ARID2, MYOCD, NKX2-5 and SRFBP1.,

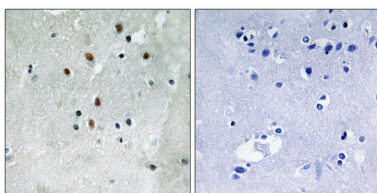
Research Area

MAPK_ERK_Growth;MAPK_G_Protein;

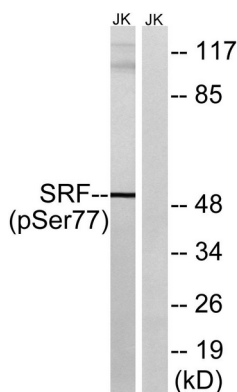
Image Data



Enzyme-Linked Immunosorbent Assay (Phospho-ELISA) for Immunogen Phosphopeptide (Phospho-left) and Non-Phosphopeptide (Phospho-right) , using SRF (Phospho-Ser77) Antibody



Immunohistochemistry analysis of paraffin-embedded human brain, using SRF (Phospho-Ser77) Antibody. The picture on the right is blocked with the phospho peptide.



Western blot analysis of lysates from Jurkat cells treated with PMA 125ng/ml 30 ' , using SRF (Phospho-Ser77) Antibody. The lane on the right is blocked with the phospho peptide.

