
Product Name: SphK2 (phospho Thr614) Rabbit Polyclonal Antibody**Catalog #: APRab05461**

For research use only.

Summary

Description	Rabbit polyclonal Antibody
Host	Rabbit
Application	WB,IHC,ICC/IF,ELISA
Reactivity	Human,Mouse,Rat
Conjugation	Unconjugated
Modification	Phosphorylated
Isotype	IgG
Clonality	Polyclonal
Form	Liquid
Concentration	1mg/ml
Storage	Aliquot and store at -20°C (valid for 12 months). Avoid freeze/thaw cycles.
Shipping	Ice bags
Buffer	Liquid in PBS containing 50% glycerol, 0.5% protective protein and 0.02% New type preservative N.
Purification	Affinity purification

Application

Dilution Ratio WB 1:500-1:2000,IHC 1:100-1:300,ICC/IF 1:50-1:200,ELISA 1:5000-1:10000

Molecular Weight

Antigen Information

Gene Name	SPHK2
Alternative Names	SPHK2; Sphingosine kinase 2; SK 2; SPK 2
Gene ID	56848.0
SwissProt ID	Q9NRA0
Immunogen	The antiserum was produced against synthesized peptide derived from human SPHK2 around the phosphorylation site of Thr614. AA range:580-629

Background

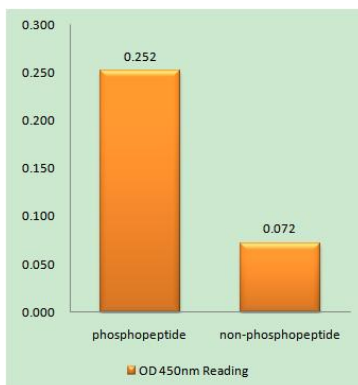
This gene encodes one of two sphingosine kinase isozymes that catalyze the phosphorylation of sphingosine into sphingosine

1-phosphate. Sphingosine 1-phosphate mediates many cellular processes including migration, proliferation and apoptosis, and also plays a role in several types of cancer by promoting angiogenesis and tumorigenesis. The encoded protein may play a role in breast cancer proliferation and chemoresistance. Alternatively spliced transcript variants encoding multiple isoforms have been observed for this gene. [provided by RefSeq, Aug 2011],alternative products:Experimental confirmation may be lacking for some isoforms,catalytic activity:ATP + sphinganine = ADP + sphinganine 1-phosphate.,catalytic activity:ATP + sphingosine = ADP + sphingosine 1-phosphate.,cofactor:Magnesium.,function:Catalyzes the phosphorylation of sphingosine to form sphingosine 1-phosphate (SPP), a lipid mediator with both intra-and extracellular functions. Also acts on D-erythro-dihydrosphingosine, D-erythro-sphingosine and L-threo-dihydrosphingosine.,similarity:Contains 1 DAGKc domain.,

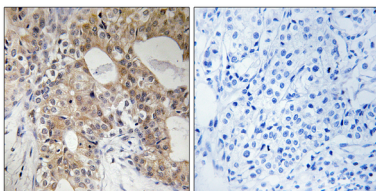
Research Area

Sphingolipid metabolism;Calcium;VEGF;Fc gamma R-mediated phagocytosis;

Image Data



Enzyme-Linked Immunosorbent Assay (Phospho-ELISA) for Immunogen Phosphopeptide (Phospho-left) and Non-Phosphopeptide (Phospho-right) , using SPHK2 (Phospho-Thr614) Antibody



Immunohistochemistry analysis of paraffin-embedded human breast carcinoma, using SPHK2 (Phospho-Thr614) Antibody. The picture on the right is blocked with the phospho peptide.