

Product Name: SNAI 1 (phospho Ser246) Rabbit Polyclonal Antibody**Catalog #: APRab05454**

For research use only.

Summary

Description	Rabbit polyclonal Antibody
Host	Rabbit
Application	WB,IHC,ICC/IF,ELISA
Reactivity	Human,Mouse,Monkey
Conjugation	Unconjugated
Modification	Phosphorylated
Isotype	IgG
Clonality	Polyclonal
Form	Liquid
Concentration	1mg/ml
Storage	Aliquot and store at -20°C (valid for 12 months). Avoid freeze/thaw cycles.
Shipping	Ice bags
Buffer	Liquid in PBS containing 50% glycerol, 0.5% protective protein and 0.02% New type preservative N.
Purification	Affinity purification

Application

Dilution Ratio	WB 1:500-1:2000,IHC 1:100-1:300,ICC/IF 1:200-1:1000,ELISA 1:5000-1:10000
Molecular Weight	29kDa

Antigen Information

Gene Name	SNAI1
Alternative Names	SNAI1; SNAH; Zinc finger protein SNAI1; Protein snail homolog 1; Protein sna
Gene ID	6615.0
SwissProt ID	O95863
Immunogen	The antiserum was produced against synthesized peptide derived from human SNAI1 around the phosphorylation site of Ser246. AA range:215-264

Background

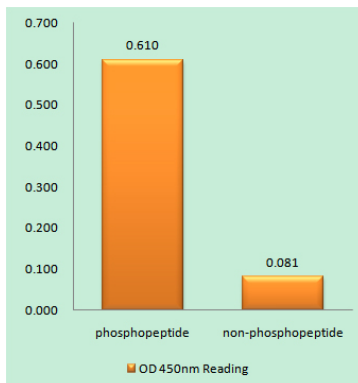
snail family transcriptional repressor 1(SNAI1) Homo sapiens The Drosophila embryonic protein snail is a zinc finger

transcriptional repressor which downregulates the expression of ectodermal genes within the mesoderm. The nuclear protein encoded by this gene is structurally similar to the Drosophila snail protein, and is also thought to be critical for mesoderm formation in the developing embryo. At least two variants of a similar processed pseudogene have been found on chromosome 2. [provided by RefSeq, Jul 2008],function:Seems to be involved in embryonic mesoderm formation. Binds to 3 E-boxes of the E-cadherin gene promoter and represses its transcription.,similarity:Belongs to the snail C2H2-type zinc-finger protein family.,similarity:Contains 4 C2H2-type zinc fingers.,tissue specificity:Expressed in a variety of tissues with the highest expression in kidney.,

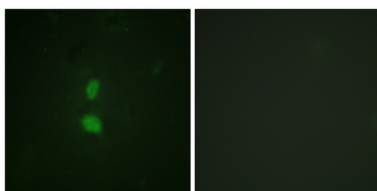
Research Area

Adherens_Junction;

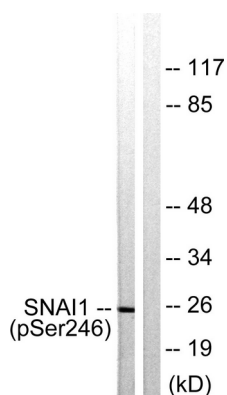
Image Data



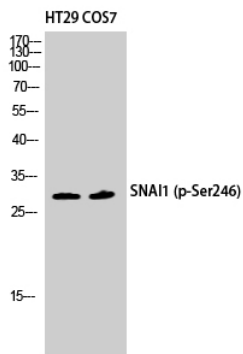
Enzyme-Linked Immunosorbent Assay (Phospho-ELISA) for Immunogen Phosphopeptide (Phospho-left) and Non-Phosphopeptide (Phospho-right) , using SNAI1 (Phospho-Ser246) Antibody



Immunofluorescence analysis of HUVEC cells, using SNAI1 (Phospho-Ser246) Antibody. The picture on the right is blocked with the phospho peptide.



Western blot analysis of lysates from HT29 cells, using SNAI1 (Phospho-Ser246) Antibody. The lane on the right is blocked with the phospho peptide.



Western Blot analysis of HT29 COS7 cells using Phospho-SNAI 1 (S246) Polyclonal Antibody diluted at 1 : 500 cells nucleus extracted by Minute TM Cytoplasmic and Nuclear Fractionation kit (SC-003, Invent biotech, MN, USA) .