
Product Name: Shb (phospho Tyr246) Rabbit Polyclonal Antibody**Catalog #: APRab05416**

For research use only.

Summary

Description	Rabbit polyclonal Antibody
Host	Rabbit
Application	WB,IHC
Reactivity	Human,Mouse
Conjugation	Unconjugated
Modification	Phosphorylated
Isotype	IgG
Clonality	Polyclonal
Form	Liquid
Concentration	1mg/ml
Storage	Aliquot and store at -20°C (valid for 12 months). Avoid freeze/thaw cycles.
Shipping	Ice bags
Buffer	Liquid in PBS containing 50% glycerol, 0.5% protective protein and 0.02% New type preservative N.
Purification	Affinity purification

Application

Dilution Ratio	WB 1:500-1:2000,IHC 1:50-1:300
Molecular Weight	55kDa

Antigen Information

Gene Name	SHB
Alternative Names	SHB; SH2 domain-containing adapter protein B
Gene ID	6461.0
SwissProt ID	Q15464
Immunogen	Synthesized phospho-peptide around the phosphorylation site of human Shb (phospho Tyr246)

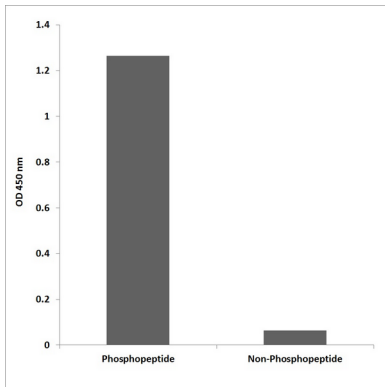
Background

domain:The SH2 domain preferentially binds phosphopeptides with the consensus sequence Y-[TVI]-X-L and mediates

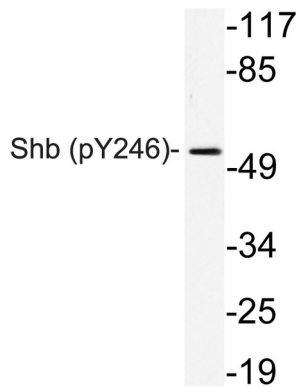
interaction with PDGFRA, PDGFRB, FGFR1, IL2RB, IL2RG, CD3Z and CRK/CrKII.,function:Adapter protein which regulates several signal transduction cascades by linking activated receptors to downstream signaling components. May play a role in angiogenesis by regulating FGFR1, VEGFR2 and PDGFR signaling. May also play a role in T-cell antigen receptor/TCR signaling, interleukin-2 signaling, apoptosis and neuronal cells differentiation by mediating basic-FGF and NGF-induced signaling cascades. May also regulate IRS1 and IRS2 signaling in insulin-producing cells.,PTM:Phosphorylated upon PDGFRA, PDGFRB, TCR, IL2 receptor, FGFR1 or VEGFR2 activation.,similarity:Contains 1 SH2 domain.,subcellular location:Associates with membrane lipid rafts upon TCR stimulation.,subunit:Interacts with PTPN11 (By similarity). Interacts with phosphorylated 'Tyr-720' of the ligand-activated receptor PDGFRA via its SH2 domain. Interacts with the ligand-activated receptors PDGFRB, FGFR1, KDR/VEGFR2, IL2RB and IL2RG. Interacts with EPS8 and V-SRC. Interacts with GRB2 and GRAP. Interacts with CD3Z. Interacts with tyrosine-phosphorylated LAT upon T-cell antigen receptor activation. Interacts with PLCG1. Interacts with ZAP70, LCP2/SLP-76, VAV1 and GRAP2. Interacts with JAK1 and JAK3. Interacts with PTK2/FAK1. Interacts with CRK/CrKII. Interacts with IRS2.,tissue specificity:Widely expressed.,domain:The SH2 domain preferentially binds phosphopeptides with the consensus sequence Y-[TVI]-X-L and mediates interaction with PDGFRA, PDGFRB, FGFR1, IL2RB, IL2RG, CD3Z and CRK/CrKII.,function:Adapter protein which regulates several signal transduction cascades by linking activated receptors to downstream signaling components. May play a role in angiogenesis by regulating FGFR1, VEGFR2 and PDGFR signaling. May also play a role in T-cell antigen receptor/TCR signaling, interleukin-2 signaling, apoptosis and neuronal cells differentiation by mediating basic-FGF and NGF-induced signaling cascades. May also regulate IRS1 and IRS2 signaling in insulin-producing cells.,PTM:Phosphorylated upon PDGFRA, PDGFRB, TCR, IL2 receptor, FGFR1 or VEGFR2 activation.,similarity:Contains 1 SH2 domain.,subcellular location:Associates with membrane lipid rafts upon TCR stimulation.,subunit:Interacts with PTPN11 (By similarity). Interacts with phosphorylated 'Tyr-720' of the ligand-activated receptor PDGFRA via its SH2 domain. Interacts with the ligand-activated receptors PDGFRB, FGFR1, KDR/VEGFR2, IL2RB and IL2RG. Interacts with EPS8 and V-SRC. Interacts with GRB2 and GRAP. Interacts with CD3Z. Interacts with tyrosine-phosphorylated LAT upon T-cell antigen receptor activation. Interacts with PLCG1. Interacts with ZAP70, LCP2/SLP-76, VAV1 and GRAP2. Interacts with JAK1 and JAK3. Interacts with PTK2/FAK1. Interacts with CRK/CrKII. Interacts with IRS2.,tissue specificity:Widely expressed.,

Research Area

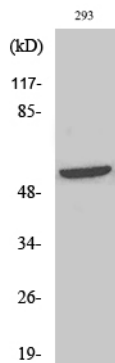
Image Data



Enzyme-Linked Immunosorbent Assay (Phospho-ELISA) for Immunogen Phosphopeptide (Phospho-left) and Non-Phosphopeptide (Phospho-right) , using Shb (Phospho-Tyr246) Antibody



Western blot analysis of lysate from 293 cells, using phospho-Serhb (Phospho-Tyr246) antibody.



Western Blot analysis of various cells using Phospho-Shb (Y246) Polyclonal Antibody