

**Product Name: Rrn3 (phospho Ser649) Rabbit Polyclonal Antibody****Catalog #: APRab05390**

For research use only.

**Summary**

|                      |   |
|----------------------|---|
| <b>Description</b>   | Rabbit polyclonal Antibody  |
| <b>Host</b>          | Rabbit  |
| <b>Application</b>   | WB,IHC,ICC/IF,ELISA   |
| <b>Reactivity</b>    | Human,Rat,Mouse   |
| <b>Conjugation</b>   | Unconjugated  |
| <b>Modification</b>  | Phosphorylated  |
| <b>Isotype</b>       | IgG   |
| <b>Clonality</b>     | Polyclonal  |
| <b>Form</b>          | Liquid  |
| <b>Concentration</b> | 1mg/ml  |
| <b>Storage</b>       | Aliquot and store at -20°C (valid for 12 months). Avoid freeze/thaw cycles.                       |
| <b>Shipping</b>      | Ice bags  |
| <b>Buffer</b>        | Liquid in PBS containing 50% glycerol, 0.5% protective protein and 0.02% New type preservative N. |
| <b>Purification</b>  | Affinity purification   |

**Application**

|                         |  |
|-------------------------|--|
| <b>Dilution Ratio</b>   | WB 1:500-1:2000,IHC 1:100-1:300,ICC/IF 1:50-1:200,ELISA 1:5000-1:20000 |
| <b>Molecular Weight</b> | 70kDa  |

**Antigen Information**

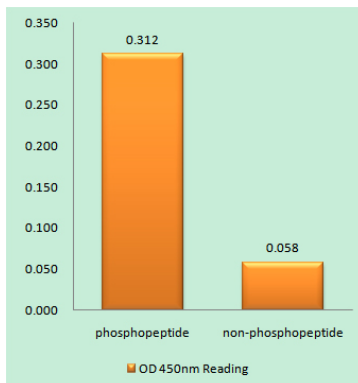
|                          |  |
|--------------------------|--|
| <b>Gene Name</b>         | RRN3   |
| <b>Alternative Names</b> | RRN3; TIFIA; RNA polymerase I-specific transcription initiation factor RRN3; Transcription initiation factor IA; TIF-IA                      |
| <b>Gene ID</b>           | 54700.0  |
| <b>SwissProt ID</b>      | Q9NYV6   |
| <b>Immunogen</b>         | The antiserum was produced against synthesized peptide derived from human TIF-IA around the phosphorylation site of Ser649. AA range:602-651 |

**Background**

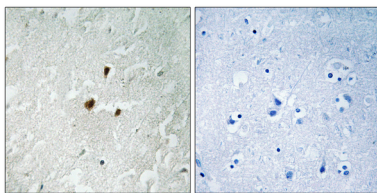
function:Required for efficient transcription initiation by RNA polymerase I.,similarity:Belongs to the RRN3 family.,function:Required for efficient transcription initiation by RNA polymerase I.,similarity:Belongs to the RRN3 family.,

## Research Area

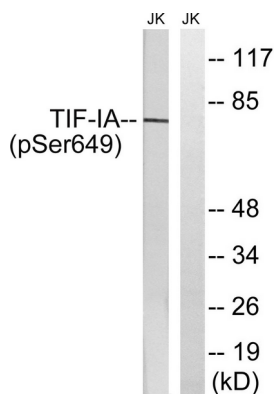
## Image Data



Enzyme-Linked Immunosorbent Assay ( Phospho-ELISA ) for Immunogen Phosphopeptide (Phospho-left) and Non-Phosphopeptide (Phospho-right) , using TIF-IA (Phospho-Ser649) Antibody



Immunohistochemistry analysis of paraffin-embedded human brain, using TIF-IA ( Phospho-Ser649) Antibody. The picture on the right is blocked with the phospho peptide.



Western blot analysis of lysates from Jurkat cells treated with starved 24h, using TIF-IA (Phospho-Ser649) Antibody. The lane on the right is blocked with the phospho peptide.