
Product Name: Rho GDI α (phospho Ser174) Rabbit Polyclonal Antibody**Catalog #: APRab05369**

For research use only.

Summary

Description	Rabbit polyclonal Antibody
Host	Rabbit
Application	WB,IHC,ICC/IF,ELISA
Reactivity	Human,Mouse,Rat
Conjugation	Unconjugated
Modification	Phosphorylated
Isotype	IgG
Clonality	Polyclonal
Form	Liquid
Concentration	1mg/ml
Storage	Aliquot and store at -20°C (valid for 12 months). Avoid freeze/thaw cycles.
Shipping	Ice bags
Buffer	Liquid in PBS containing 50% glycerol, 0.5% protective protein and 0.02% New type preservative N.
Purification	Affinity purification

Application

Dilution Ratio	WB 1:500-1:2000,IHC 1:100-1:300,ICC/IF 1:50-1:200,ELISA 1:10000-1:20000
Molecular Weight	23kDa

Antigen Information

Gene Name	ARHGDI A
Alternative Names	ARHGDI A; GDIA1; Rho GDP-dissociation inhibitor 1; Rho GDI 1; Rho-GDI alpha
Gene ID	396.0
SwissProt ID	P52565
Immunogen	The antiserum was produced against synthesized peptide derived from human ARHGDI A around the phosphorylation site of Ser174. AA range:140-189

Background

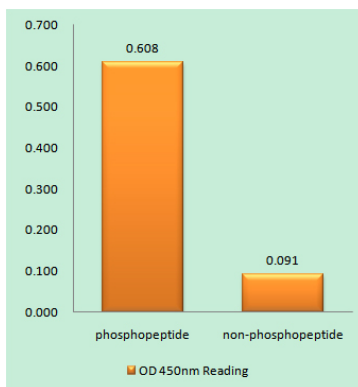
This gene encodes a protein that plays a key role in the regulation of signaling through Rho GTPases. The encoded protein

inhibits the disassociation of Rho family members from GDP (guanine diphosphate), thereby maintaining these factors in an inactive state. Activity of this protein is important in a variety of cellular processes, and expression of this gene may be altered in tumors. Mutations in this gene have been found in individuals with nephrotic syndrome, type 8. Alternate splicing results in multiple transcript variants. [provided by RefSeq, Jul 2014],function:Regulates the GDP/GTP exchange reaction of the Rho proteins by inhibiting the dissociation of GDP from them, and the subsequent binding of GTP to them.,similarity:Belongs to the Rho GDI family.,subunit:Monomer.,

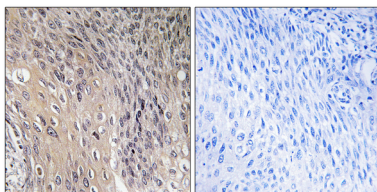
Research Area

Neurotrophin;

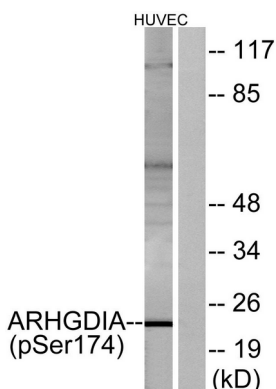
Image Data



Enzyme-Linked Immunosorbent Assay (Phospho-ELISA) for Immunogen Phosphopeptide (Phospho-left) and Non-Phosphopeptide (Phospho-right) , using ARHGDI A (Phospho-Ser174) Antibody



Immunohistochemistry analysis of paraffin-embedded human cervix carcinoma, using ARHGDI A (Phospho-Ser174) Antibody. The picture on the right is blocked with the phospho peptide.



Western blot analysis of lysates from HUVEC cells treated with EGF 200ng/ml 30 ' , using ARHGDI A (Phospho-Ser174) Antibody. The lane on the right is blocked with the phospho peptide.