
Product Name: Ret (phospho Tyr1015) Rabbit Polyclonal Antibody**Catalog #: APRab05364**

For research use only.

Summary

Description	Rabbit polyclonal Antibody
Host	Rabbit
Application	WB,IHC
Reactivity	Human,Mouse,Rat,Monkey
Conjugation	Unconjugated
Modification	Phosphorylated
Isotype	IgG
Clonality	Polyclonal
Form	Liquid
Concentration	1mg/ml
Storage	Aliquot and store at -20°C (valid for 12 months). Avoid freeze/thaw cycles.
Shipping	Ice bags
Buffer	Liquid in PBS containing 50% glycerol, 0.5% protective protein and 0.02% New type preservative N.
Purification	Affinity purification

Application

Dilution Ratio	WB 1:500-1:2000,IHC 1:50-1:300
Molecular Weight	124kDa

Antigen Information

Gene Name	RET
Alternative Names	RET; CDHF12; CDHR16; PTC; RET51; Proto-oncogene tyrosine-protein kinase receptor Ret; Cadherin family member 12; Proto-oncogene c-Ret
Gene ID	5979.0
SwissProt ID	P07949
Immunogen	The antiserum was produced against synthesized peptide derived from human Ret around the phosphorylation site of Tyr1015. AA range:991-1040

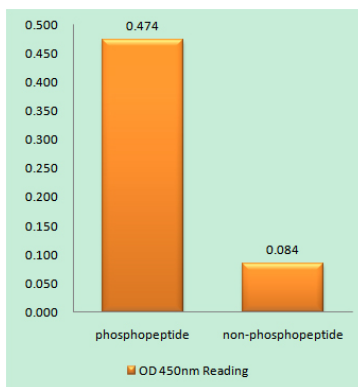
Background

ret proto-oncogene(RET) Homo sapiens This gene, a member of the cadherin superfamily, encodes one of the receptor tyrosine kinases, which are cell-surface molecules that transduce signals for cell growth and differentiation. This gene plays a crucial role in neural crest development, and it can undergo oncogenic activation in vivo and in vitro by cytogenetic rearrangement. Mutations in this gene are associated with the disorders multiple endocrine neoplasia, type IIA, multiple endocrine neoplasia, type IIB, Hirschsprung disease, and medullary thyroid carcinoma.

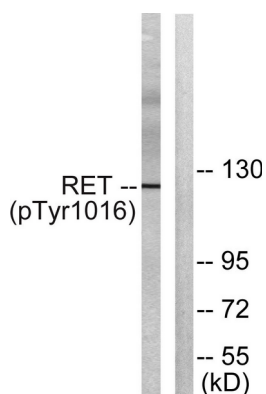
Research Area

Endocytosis;Pathways in cancer;Thyroid cancer;

Image Data



Enzyme-Linked Immunosorbent Assay (Phospho-ELISA) for Immunogen Phosphopeptide (Phospho-left) and Non-Phosphopeptide (Phospho-right) , using Ret (Phospho-Tyr1015) Antibody



Western blot analysis of lysates from COS7 cells treated with EGF 200ng/ml 30', using Ret (Phospho-Tyr1015) Antibody. The lane on the right is blocked with the phospho peptide.