

---

**Product Name: Raf-1 (phospho Ser296) Rabbit Polyclonal Antibody****Catalog #: APRab05335**

For research use only.

**Summary**

<b>Description</b>	Rabbit polyclonal Antibody
<b>Host</b>	Rabbit
<b>Application</b>	WB,IHC,ICC/IF,ELISA
<b>Reactivity</b>	Human,Mouse,Rat
<b>Conjugation</b>	Unconjugated
<b>Modification</b>	Phosphorylated
<b>Isotype</b>	IgG
<b>Clonality</b>	Polyclonal
<b>Form</b>	Liquid
<b>Concentration</b>	1mg/ml
<b>Storage</b>	Aliquot and store at -20°C (valid for 12 months). Avoid freeze/thaw cycles.
<b>Shipping</b>	Ice bags
<b>Buffer</b>	Liquid in PBS containing 50% glycerol, 0.5% protective protein and 0.02% New type preservative N.
<b>Purification</b>	Affinity purification

**Application**

<b>Dilution Ratio</b>	WB 1:500-1:2000,IHC 1:100-1:300,ICC/IF 1:50-1:200,ELISA 1:10000-1:20000
<b>Molecular Weight</b>	74kDa

**Antigen Information**

<b>Gene Name</b>	RAF1
<b>Alternative Names</b>	RAF1; RAF; RAF proto-oncogene serine/threonine-protein kinase; Proto-oncogene c-RAF; cRaf; Raf-1
<b>Gene ID</b>	5894.0
<b>SwissProt ID</b>	P04049
<b>Immunogen</b>	The antiserum was produced against synthesized peptide derived from human C-RAF around the phosphorylation site of Ser296. AA range:271-320

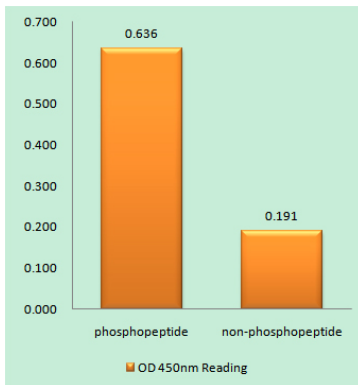
**Background**

This gene is the cellular homolog of viral raf gene (v-raf). The encoded protein is a MAP kinase kinase kinase (MAP3K), which functions downstream of the Ras family of membrane associated GTPases to which it binds directly. Once activated, the cellular RAF1 protein can phosphorylate to activate the dual specificity protein kinases MEK1 and MEK2, which in turn phosphorylate to activate the serine/threonine specific protein kinases, ERK1 and ERK2. Activated ERKs are pleiotropic effectors of cell physiology and play an important role in the control of gene expression involved in the cell division cycle, apoptosis, cell differentiation and cell migration. Mutations in this gene are associated with Noonan syndrome 5 and LEOPARD syndrome 2. [provided by RefSeq, Jul 2008],catalytic activity:ATP + a protein = ADP + a phosphoprotein.,cofactor: Binds 2 zinc ions per subunit.,disease: Defects in RAF1 are the cause of LEOPARD syndrome type 2 (LEOPARD syndrome-2) [MIM:611554]. LEOPARD syndrome is an autosomal dominant disorder allelic with Noonan syndrome. The acronym LEOPARD stands for lentiginos, electrocardiographic conduction abnormalities, ocular hypertelorism, pulmonic stenosis, abnormalities of genitalia, retardation of growth, and deafness.,disease: Defects in RAF1 are the cause of Noonan syndrome type 5 (NS5) [MIM:611553]. Noonan syndrome (NS) is a disorder characterized by dysmorphic facial features, short stature, hypertelorism, cardiac anomalies, deafness, motor delay, and a bleeding diathesis. It is a genetically heterogeneous and relatively common syndrome, with an estimated incidence of 1 in 1000-2500 live births.,function: Involved in the transduction of mitogenic signals from the cell membrane to the nucleus. Part of the Ras-dependent signaling pathway from receptors to the nucleus. Protects cells from apoptosis mediated by STK3.,PTM: Phosphorylated upon DNA damage, probably by ATM or ATR. Phosphorylation at Thr-269 increases its kinase activity.,similarity: Belongs to the protein kinase superfamily. TKL Ser/Thr protein kinase family. RAF subfamily.,similarity: Contains 1 phorbol-ester/DAG-type zinc finger.,similarity: Contains 1 protein kinase domain.,similarity: Contains 1 RBD (Ras-binding) domain.,subunit: Interacts with Ras proteins; the interaction is antagonized by RIN1. Weakly interacts with RIT1 (By similarity). Interacts with STK3; the interaction inhibits its pro-apoptotic activity. Interacts with YWHAZ (unphosphorylated at 'Thr-232').,tissue specificity: In skeletal muscle, isoform 1 is more abundant than isoform 2.,

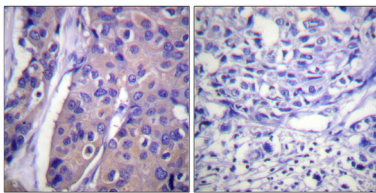
## Research Area

MAPK\_ERK\_Growth;MAPK\_G\_Protein;ErbB\_HER;Chemokine;Vascular smooth muscle contraction;VEGF;Focal adhesion;Gap junction;Natural killer cell mediated cytotoxicity;T\_Cell\_Receptor;B\_Cell\_Antigen;Fc epsilon RI;Fc gamma R-mediated phagocytosis;Long-term potentiation;Neurotrophin;Long-term depression;Regulates Actin and Cytoskeleton;Insulin\_Receptor;GnRH;Progesterone-mediated oocyte maturation;Melanogenesis;Pathways in cancer;Colorectal cancer;Renal cell carcinoma;Pancreatic cancer;Endometrial cancer;Glioma;Prostate cancer;Melanoma;Bladder cancer;Chronic myeloid leukemia;Acute myeloid leukemia;Non-small cell lung cancer;

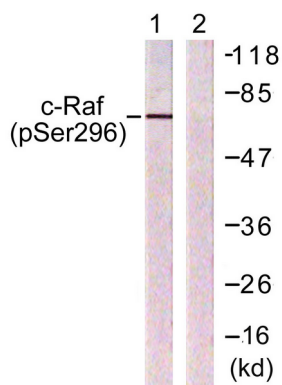
## Image Data



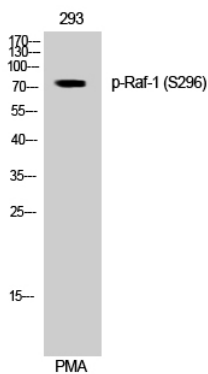
Enzyme-Linked Immunosorbent Assay ( Phospho-ELISA ) for Immunogen Phosphopeptide ( Phospho-left ) and Non-Phosphopeptide ( Phospho-right ) , using C-RAF ( Phospho-Ser296 ) Antibody



Immunohistochemistry analysis of paraffin-embedded human breast carcinoma, using C-RAF ( Phospho-Ser296 ) Antibody. The picture on the right is blocked with the phospho peptide.



Western blot analysis of lysates from 293 cells treated with PMA 125ng/ml 30 ' , using C-RAF ( Phospho-Ser296 ) Antibody. The lane on the right is blocked with the phospho peptide.



Western Blot analysis of 293 cells using Phospho-Raf-1 ( S296 ) Polyclonal Antibody diluted at 1: 1000