
Product Name: PTEN (phospho Ser370) Rabbit Polyclonal Antibody**Catalog #: APRab05311**

For research use only.

Summary

Description	Rabbit polyclonal Antibody
Host	Rabbit
Application	WB,IHC,ICC/IF,ELISA
Reactivity	Human,Mouse,Rat
Conjugation	Unconjugated
Modification	Phosphorylated
Isotype	IgG
Clonality	Polyclonal
Form	Liquid
Concentration	1mg/ml
Storage	Aliquot and store at -20°C (valid for 12 months). Avoid freeze/thaw cycles.
Shipping	Ice bags
Buffer	Liquid in PBS containing 50% glycerol, 0.5% protective protein and 0.02% New type preservative N.
Purification	Affinity purification

Application

Dilution Ratio WB 1:500-1:2000,IHC 1:100-1:300,ICC/IF 1:50-1:200,ELISA 1:5000-1:10000

Molecular Weight

Antigen Information

Gene Name	PTEN
Alternative Names	PTEN; MMAC1; TEP1; Phosphatidylinositol 3; 4,5-trisphosphate 3-phosphatase and dual-specificity protein phosphatase PTEN; Mutated in multiple advanced cancers 1; Phosphatase and tensin homolog
Gene ID	5728.0
SwissProt ID	P60484
Immunogen	The antiserum was produced against synthesized peptide derived from human PTEN around the phosphorylation site of Ser370. AA range:355-385

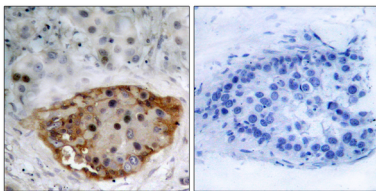
Background

Tumor suppressor. Acts as a dual-specificity protein phosphatase, dephosphorylating tyrosine-, serine- and threonine-phosphorylated proteins. Also acts as a lipid phosphatase, removing the phosphate in the D3 position of the inositol ring from phosphatidylinositol 3, 4, 5-trisphosphate, phosphatidylinositol 3, 4-diphosphate, phosphatidylinositol 3-phosphate and inositol 1, 3, 4, 5-tetrakisphosphate with order of substrate preference in vitro $\text{PtdIns}(3, 4, 5)\text{P}_3 > \text{PtdIns}(3, 4)\text{P}_2 > \text{PtdIns}3\text{P} > \text{Ins}(1, 3, 4, 5)\text{P}_4$.

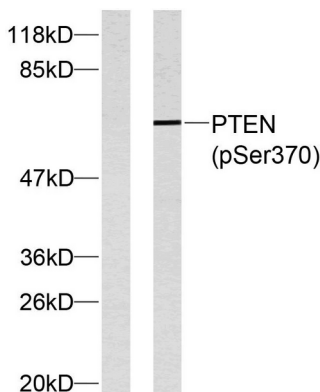
Research Area

Insulin Receptor; Regulation_Microtubule; B Cell Receptor; mTOR; PI3K/Akt; Protein_Acetylation

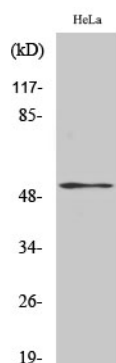
Image Data



Immunohistochemistry analysis of paraffin-embedded human breast cancer, using PTEN (Phospho-Ser370) Antibody. The picture on the right is blocked with the PTEN (Phospho-Ser370) peptide.



Western blot analysis of PTEN (Phospho-Ser370) Antibody. The lane on the right is blocked with the PTEN (Phospho-Ser370) peptide.



Western Blot analysis of various cells using Phospho-PTEN (S370) Polyclonal Antibody