
Product Name: Pragmin (phospho Tyr413) Rabbit Polyclonal Antibody**Catalog #: APRab05301**

For research use only.

Summary

Description	Rabbit polyclonal Antibody
Host	Rabbit
Application	WB,IHC,ICC/IF,ELISA
Reactivity	Human,Mouse,Rat
Conjugation	Unconjugated
Modification	Phosphorylated
Isotype	IgG
Clonality	Polyclonal
Form	Liquid
Concentration	1mg/ml
Storage	Aliquot and store at -20°C (valid for 12 months). Avoid freeze/thaw cycles.
Shipping	Ice bags
Buffer	Liquid in PBS containing 50% glycerol, 0.5% protective protein and 0.02% New type preservative N.
Purification	Affinity purification

Application

Dilution Ratio	WB 1:500-1:2000,IHC 1:100-1:300,ICC/IF 1:50-1:200,ELISA 1:5000-1:20000
Molecular Weight	175kDa

Antigen Information

Gene Name	SGK223
Alternative Names	SGK223; Tyrosine-protein kinase SgK223; Sugen kinase 223
Gene ID	157285.0
SwissProt ID	Q86YV5
Immunogen	Synthesized phospho-peptide around the phosphorylation site of human Pragmin (phospho Tyr413)

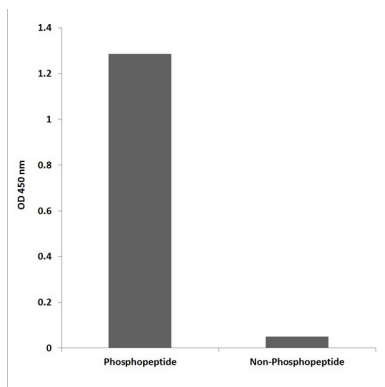
Background

This gene encodes an enzyme that belongs to the tyrosine protein kinase family. A similar protein in rat binds to Rho family

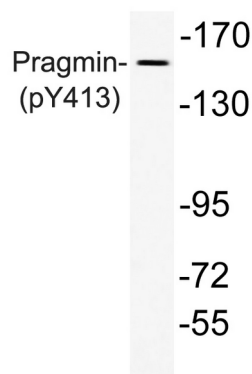
GTPase 2 (Rnd2) and regulates neurite outgrowth via activation of Ras homolog gene family, member A (RhoA). [provided by RefSeq, Mar 2014],catalytic activity:ATP + a [protein]-L-tyrosine = ADP + a [protein]-L-tyrosine phosphate.,similarity:Belongs to the protein kinase superfamily.,similarity:Contains 1 protein kinase domain.,

Research Area

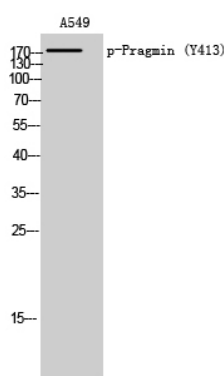
Image Data



Enzyme-Linked Immunosorbent Assay (Phospho-ELISA) for Immunogen Phosphopeptide (Phospho-left) and Non-Phosphopeptide (Phospho-right) , using Pragmin (Phospho-Tyr413) Antibody



Western blot analysis of lysate from A549 cells, using phospho-Pragmin (Phospho-Tyr413) antibody.



Western Blot analysis of A549 cells using Phospho-Pragmin (Y413) Polyclonal Antibody