

Product Name: PLC β 3 (phospho Ser537) Rabbit Polyclonal Antibody**Catalog #: APRab05283**

For research use only.

Summary

Description	Rabbit polyclonal Antibody
Host	Rabbit
Application	WB,IHC,ICC/IF,ELISA
Reactivity	Human,Mouse,Rat
Conjugation	Unconjugated
Modification	Phosphorylated
Isotype	IgG
Clonality	Polyclonal
Form	Liquid
Concentration	1mg/ml
Storage	Aliquot and store at -20°C (valid for 12 months). Avoid freeze/thaw cycles.
Shipping	Ice bags
Buffer	Liquid in PBS containing 50% glycerol, 0.5% protective protein and 0.02% New type preservative N.
Purification	Affinity purification

Application

Dilution Ratio	WB 1:500-1:2000,IHC 1:100-1:300,ICC/IF 1:50-1:200,ELISA 1:5000-1:20000
Molecular Weight	150kDa

Antigen Information

Gene Name	PLCB3
Alternative Names	PLCB3; 1-phosphatidylinositol 4; 5-bisphosphate phosphodiesterase beta-3; Phosphoinositide phospholipase C-beta-3; Phospholipase C-beta-3; PLC-beta-3
Gene ID	5331.0
SwissProt ID	Q01970
Immunogen	The antiserum was produced against synthesized peptide derived from human PLC beta3 around the phosphorylation site of Ser537. AA range:503-552

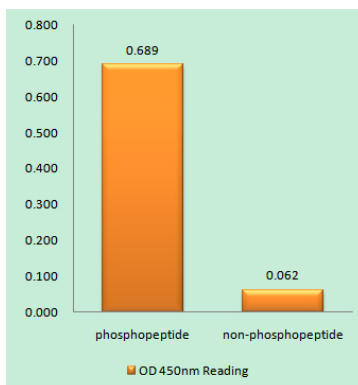
Background

This gene encodes a member of the phosphoinositide phospholipase C beta enzyme family that catalyze the production of the secondary messengers diacylglycerol and inositol 1,4,5-triphosphate from phosphatidylinositol in G-protein-linked receptor-mediated signal transduction. Alternative splicing results in multiple transcript variants.[provided by RefSeq, May 2010],catalytic activity:1-phosphatidyl-1D-myo-inositol 4,5-bisphosphate + H(2)O = 1D-myo-inositol 1,4,5-trisphosphate + diacylglycerol.,cofactor:Calcium.,function:The production of the second messenger molecules diacylglycerol (DAG) and inositol 1,4,5-trisphosphate (IP3) is mediated by activated phosphatidylinositol-specific phospholipase C enzymes.,similarity:Contains 1 C2 domain.,similarity:Contains 1 PI-PLC X-box domain.,similarity:Contains 1 PI-PLC Y-box domain.,subunit:Interacts with SHANK2 (By similarity). Interacts with LPAR2.,

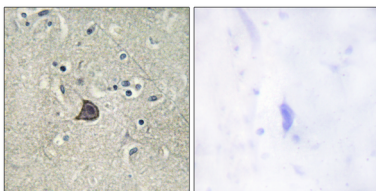
Research Area

Stem cell pathway; WNT;WNT-T CELL;β-Catenin; AMPK

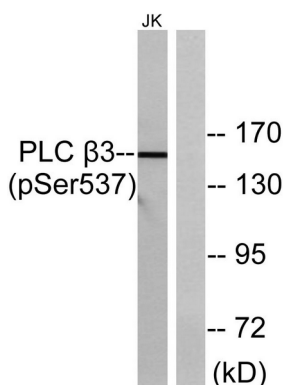
Image Data



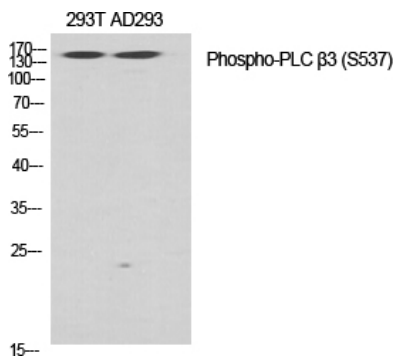
Enzyme-Linked Immunosorbent Assay (Phospho-ELISA) for Immunogen Phosphopeptide (Phospho-left) and Non-Phosphopeptide (Phospho-right) , using PLC beta3 (Phospho-Ser537) Antibody



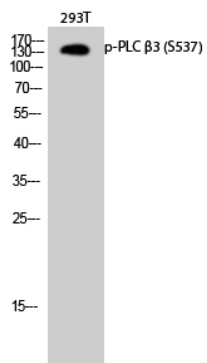
Immunohistochemistry analysis of paraffin-embedded human brain, using PLC beta3 (Phospho-Ser537) Antibody. The picture on the right is blocked with the phospho peptide.



Western blot analysis of lysates from Jurkat cells treated with UV 15 ' ; using PLC beta3 (Phospho-Ser537) Antibody. The lane on the right is blocked with the phospho peptide.



Western Blot analysis of various cells using Phospho-PLC β 3 (S537) Polyclonal Antibody diluted at 1 : 500



Western Blot analysis of 293T cells using Phospho-PLC β 3 (S537) Polyclonal Antibody diluted at 1 : 500