

**Product Name: Pdcd-4 (phospho Ser457) Rabbit Polyclonal Antibody****Catalog #: APRab05222**

For research use only.

**Summary**

<b>Description</b>	Rabbit polyclonal Antibody
<b>Host</b>	Rabbit
<b>Application</b>	WB,IHC,ICC/IF,ELISA
<b>Reactivity</b>	Human,Mouse,Rat
<b>Conjugation</b>	Unconjugated
<b>Modification</b>	Phosphorylated
<b>Isotype</b>	IgG
<b>Clonality</b>	Polyclonal
<b>Form</b>	Liquid
<b>Concentration</b>	1mg/ml
<b>Storage</b>	Aliquot and store at -20°C (valid for 12 months). Avoid freeze/thaw cycles.
<b>Shipping</b>	Ice bags
<b>Buffer</b>	Liquid in PBS containing 50% glycerol, 0.5% protective protein and 0.02% New type preservative N.
<b>Purification</b>	Affinity purification

**Application**

<b>Dilution Ratio</b>	WB 1:500-1:2000,IHC 1:100-1:300,ICC/IF 1:50-1:200,ELISA 1:5000-1:20000
<b>Molecular Weight</b>	51kDa

**Antigen Information**

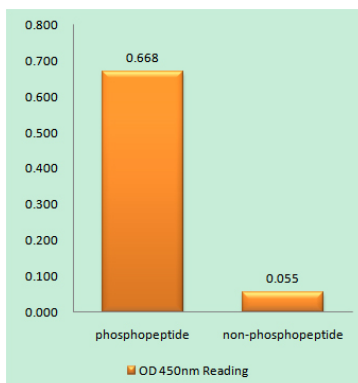
<b>Gene Name</b>	PDCD4
<b>Alternative Names</b>	PDCD4; H731; Programmed cell death protein 4; Neoplastic transformation inhibitor protein; Nuclear antigen H731-like; Protein 197/15a
<b>Gene ID</b>	27250.0
<b>SwissProt ID</b>	Q53EL6
<b>Immunogen</b>	The antiserum was produced against synthesized peptide derived from human PDCD4 around the phosphorylation site of Ser457. AA range:420-469

**Background**

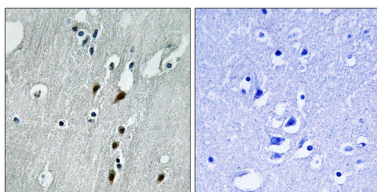
This gene is a tumor suppressor and encodes a protein that binds to the eukaryotic translation initiation factor 4A1 and inhibits its function by preventing RNA binding. Alternative splicing results in multiple transcript variants. [provided by RefSeq, Dec 2010],caution:The sequence shown here is derived from an Ensembl automatic analysis pipeline and should be considered as preliminary data.,disease:Loss of expression correlated with tumor progression of lung and colon carcinoma.,domain:Binds EIF4A1 via the MA3 domains.,function:Tumor suppressor. Inhibits tumor promoter-induced neoplastic transformation. Down-regulates the expression of MAP4K1, thus inhibiting events important in driving invasion, namely, MAPK85 activation and consequent JUN-dependent transcription. May play a role in apoptosis. Inhibits the helicase activity of EIF4A and cap-dependent translation. Binds RNA.,induction:IL2 stimulation inhibits expression, while IL12 increases expression.,sequence caution:Contaminating sequence. Potential poly-A sequence.,similarity:Belongs to the PDCD4 family.,similarity:Contains 2 MI domains.,subcellular location:Shuttles between the nucleus and cytoplasm. Predominantly nuclear under normal growth conditions. Exported from the nucleus in the absence of serum.,subunit:Interacts with EIF4A1 and EIF4A2.,tissue specificity:Up-regulated in proliferative cells. Highly expressed in epithelial cells of the mammary gland.,

## Research Area

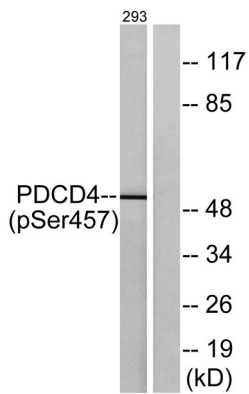
## Image Data



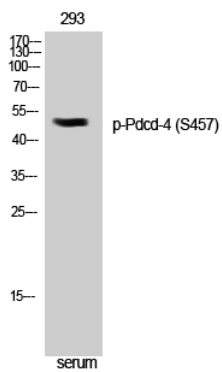
Enzyme-Linked Immunosorbent Assay ( Phospho-ELISA ) for Immunogen Phosphopeptide (Phospho-left) and Non-Phosphopeptide (Phospho-right) , using PDCD4 (Phospho-Ser457) Antibody



Immunohistochemistry analysis of paraffin-embedded human brain, using PDCD4 (Phospho-Ser457) Antibody. The picture on the right is blocked with the phosphopeptide.



Western blot analysis of lysates from 293 cells treated with serum 20% 15', using PDCD4 (Phospho-Ser457) Antibody. The lane on the right is blocked with the phospho peptide.



Western Blot analysis of 293 cells using Phospho-Pdcd-4 (S457) Polyclonal Antibody