
Product Name: p40-phox (phospho Thr154) Rabbit Polyclonal Antibody**Catalog #: APRab05157**

For research use only.

Summary

| | |
|----------------------|---|
| Description | Rabbit polyclonal Antibody |
| Host | Rabbit |
| Application | WB,IHC,ICC/IF,ELISA |
| Reactivity | Human,Mouse |
| Conjugation | Unconjugated |
| Modification | Phosphorylated |
| Isotype | IgG |
| Clonality | Polyclonal |
| Form | Liquid |
| Concentration | 1mg/ml |
| Storage | Aliquot and store at -20°C (valid for 12 months). Avoid freeze/thaw cycles. |
| Shipping | Ice bags |
| Buffer | Liquid in PBS containing 50% glycerol, 0.5% protective protein and 0.02% New type preservative N. |
| Purification | Affinity purification |

Application**Dilution Ratio** WB 1:500-1:2000,IHC 1:100-1:300,ICC/IF 1:50-1:200,ELISA 1:5000-1:10000**Molecular Weight****Antigen Information**

| | |
|--------------------------|---|
| Gene Name | NCF4 |
| Alternative Names | NCF4; SH3PXD4; Neutrophil cytosol factor 4; NCF-4; Neutrophil NADPH oxidase factor 4; SH3 and PX domain-containing protein 4; p40-phox; p40phox |
| Gene ID | 4689.0 |
| SwissProt ID | Q15080 |
| Immunogen | The antiserum was produced against synthesized peptide derived from human p40 phox around the phosphorylation site of Thr154. AA range:120-169 |

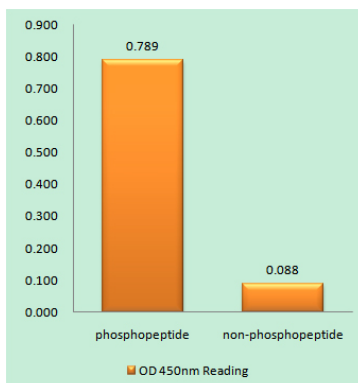
Background

The protein encoded by this gene is a cytosolic regulatory component of the superoxide-producing phagocyte NADPH-oxidase, a multicomponent enzyme system important for host defense. This protein is preferentially expressed in cells of myeloid lineage. It interacts primarily with neutrophil cytosolic factor 2 (NCF2/p67-phox) to form a complex with neutrophil cytosolic factor 1 (NCF1/p47-phox), which further interacts with the small G protein RAC1 and translocates to the membrane upon cell stimulation. This complex then activates flavocytochrome b, the membrane-integrated catalytic core of the enzyme system. The PX domain of this protein can bind phospholipid products of the PI(3) kinase, which suggests its role in PI(3) kinase-mediated signaling events. The phosphorylation of this protein was found to negatively regulate the enzyme activity. Alternatively spliced transcript variants encoding different functions: Component of the NADPH-oxidase, a multicomponent enzyme system responsible for the oxidative burst in which electrons are transported from NADPH to molecular oxygen, generating reactive oxidant intermediates. It may be important for the assembly and/or activation of the NADPH-oxidase complex.,similarity:Contains 1 PX (phox homology) domain.,similarity:Contains 1 SH3 domain.,subunit:p40-PHOX associates primarily with p67-PHOX to form a complex with p47-PHOX.,tissue specificity:Expression is restricted to hematopoietic cells.,

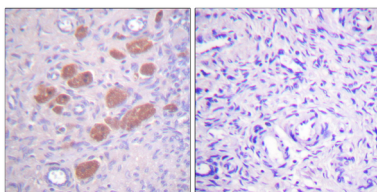
Research Area

Leukocyte transendothelial migration;

Image Data



Enzyme-Linked Immunosorbent Assay (Phospho-ELISA) for Immunogen Phosphopeptide (Phospho-left) and Non-Phosphopeptide (Phospho-right) , using p40 phox (Phospho-Thr154) Antibody



Immunohistochemistry analysis of paraffin-embedded human ovary, using p40 phox (Phospho-Thr154) Antibody. The picture on the right is blocked with the phospho peptide.