
Product Name: p23 (phospho Ser113) Rabbit Polyclonal Antibody**Catalog #: APRab05146**

For research use only.

Summary

Description	Rabbit polyclonal Antibody
Host	Rabbit
Application	WB,IHC,ICC/IF,ELISA
Reactivity	Human,Mouse,Rat
Conjugation	Unconjugated
Modification	Phosphorylated
Isotype	IgG
Clonality	Polyclonal
Form	Liquid
Concentration	1mg/ml
Storage	Aliquot and store at -20°C (valid for 12 months). Avoid freeze/thaw cycles.
Shipping	Ice bags
Buffer	Liquid in PBS containing 50% glycerol, 0.5% protective protein and 0.02% New type preservative N.
Purification	Affinity purification

Application

Dilution Ratio	WB 1:500-1:2000,IHC 1:100-1:300,ICC/IF 1:50-1:200,ELISA 1:5000-1:20000
Molecular Weight	24kDa

Antigen Information

Gene Name	PTGES3
Alternative Names	PTGES3; P23; TEBP; Prostaglandin E synthase 3; Cytosolic prostaglandin E2 synthase; cPGES; Hsp90 co-chaperone; Progesterone receptor complex p23; Telomerase-binding protein p23
Gene ID	10728.0
SwissProt ID	Q15185
Immunogen	The antiserum was produced against synthesized peptide derived from human TEBP around the phosphorylation site of Ser113. AA range:79-128

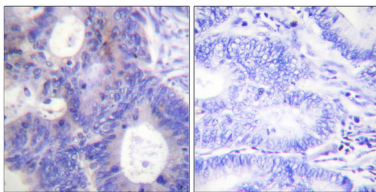
Background

This gene encodes an enzyme that converts prostaglandin endoperoxide H2 (PGH2) to prostaglandin E2 (PGE2). This protein functions as a co-chaperone with heat shock protein 90 (HSP90), localizing to response elements in DNA and disrupting transcriptional activation complexes. Alternative splicing results in multiple transcript variants. There are multiple pseudogenes of this gene on several different chromosomes. [provided by RefSeq, Feb 2016],catalytic activity:(5Z,13E)-(15S)-9-alpha,11-alpha-epidioxy-15-hydroxyprosta-5,13-dienoate = (5Z,13E)-(15S)-11-alpha,15-dihydroxy-9-oxoprosta-5,13-dienoate.,function:Molecular chaperone that localizes to genomic response elements in a hormone-dependent manner and disrupts receptor-mediated transcriptional activation, by promoting disassembly of transcriptional regulatory complexes.,pathway:Lipid metabolism; prostaglandin biosynthesis.,similarity:Belongs to the p23/wos2 family.,similarity:Contains 1 CS domain.,subunit:Binds to telomerase and to the progesterone receptor.,

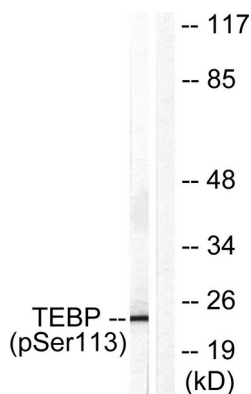
Research Area

Epigenetics and Nuclear Signaling

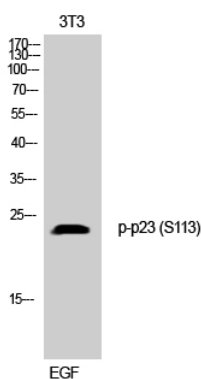
Image Data



Immunohistochemistry analysis of paraffin-embedded human colon carcinoma, using TEBP (Phospho-Ser113) Antibody. The picture on the right is blocked with the phospho peptide.



Western blot analysis of lysates from NIH/3T3 cells treated with EGF 200ng/ml 30'; using TEBP (Phospho-Ser113) Antibody. The lane on the right is blocked with the phospho peptide.



Western Blot analysis of 3T3 cells using Phospho-p23 (S113) Polyclonal Antibody