

Product Name: OSR1 (phospho Thr185) Rabbit Polyclonal Antibody**Catalog #: APRab05138**

For research use only.

Summary

Description	Rabbit polyclonal Antibody
Host	Rabbit
Application	WB,IHC,ICC/IF,ELISA
Reactivity	Human,Mouse
Conjugation	Unconjugated
Modification	Phosphorylated
Isotype	IgG
Clonality	Polyclonal
Form	Liquid
Concentration	1mg/ml
Storage	Aliquot and store at -20°C (valid for 12 months). Avoid freeze/thaw cycles.
Shipping	Ice bags
Buffer	Liquid in PBS containing 50% glycerol, 0.5% protective protein and 0.02% New type preservative N.
Purification	Affinity purification

Application

Dilution Ratio	WB 1:500-1:2000,IHC 1:100-1:300,ICC/IF 1:50-1:200,ELISA 1:5000-1:20000
Molecular Weight	65kDa

Antigen Information

Gene Name	OXR1
Alternative Names	OXR1; KIAA1101; OSR1; Serine/threonine-protein kinase OSR1; Oxidative stress-responsive 1 protein
Gene ID	9943.0
SwissProt ID	O95747
Immunogen	The antiserum was produced against synthesized peptide derived from human OSR1 around the phosphorylation site of Thr185. AA range:151-200

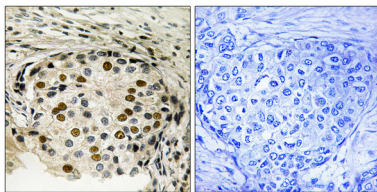
Background

The product of this gene belongs to the Ser/Thr protein kinase family of proteins. It regulates downstream kinases in response to environmental stress, and may play a role in regulating the actin cytoskeleton. [provided by RefSeq, Jul 2008], catalytic activity: ATP + a protein = ADP + a phosphoprotein., cofactor: Magnesium., enzyme regulation: By autophosphorylation on threonine., function: Regulates downstream kinases in response to environmental stress. May also have a function in regulating the actin cytoskeleton., PTM: Phosphorylated upon DNA damage, probably by ATM or ATR., similarity: Belongs to the protein kinase superfamily. STE Ser/Thr protein kinase family. STE20 subfamily., similarity: Contains 1 protein kinase domain., subunit: Binds to and phosphorylates PAK1. Interacts with chloride channel proteins SLC12A6 isoform 2, SLC12A1 and SLC12A2 but not with SLC12A4 and SLC12A7, possibly establishing sensor/signaling modules that initiate the cellular response to environmental stress. Binds to and phosphorylates RELL1, RELL2 AND RELT., tissue specificity: Ubiquitously expressed in all tissue examined.,

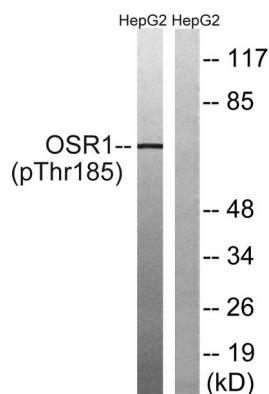
Research Area

Signal Transduction

Image Data



Immunohistochemistry analysis of paraffin-embedded human breast carcinoma, using OSR1 (Phospho-Thr185) Antibody. The picture on the right is blocked with the phospho peptide.



Western blot analysis of lysates from HepG2 cells treated with serum 20% 15', using OSR1 (Phospho-Thr185) Antibody. The lane on the right is blocked with the phospho peptide.