
Product Name: NIFK (phospho Thr234) Rabbit Polyclonal Antibody**Catalog #: APRab05111**

For research use only.

Summary

Description	Rabbit polyclonal Antibody
Host	Rabbit
Application	IHC,ICC/IF,ELISA
Reactivity	Human,Mouse
Conjugation	Unconjugated
Modification	Phosphorylated
Isotype	IgG
Clonality	Polyclonal
Form	Liquid
Concentration	1mg/ml
Storage	Aliquot and store at -20°C (valid for 12 months). Avoid freeze/thaw cycles.
Shipping	Ice bags
Buffer	Liquid in PBS containing 50% glycerol, 0.5% protective protein and 0.02% New type preservative N.
Purification	Affinity purification

Application

Dilution Ratio IHC 1:100-1:300,ICC/IF 1:200-1:1000,ELISA 1:20000-1:40000

Molecular Weight

Antigen Information

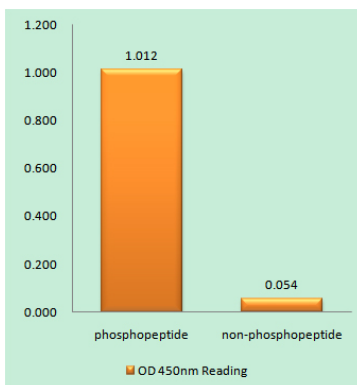
Gene Name	MKI67IP MKI67IP; NIFK; NOPP34; MKI67 FHA domain-interacting nucleolar phosphoprotein;
Alternative Names	Nucleolar phosphoprotein Nopp34; Nucleolar protein interacting with the FHA domain of pKI-67; hNIFK
Gene ID	84365.0
SwissProt ID	Q9BYG3
Immunogen	The antiserum was produced against synthesized peptide derived from human NIFK around the phosphorylation site of Thr234. AA range:200-249

Background

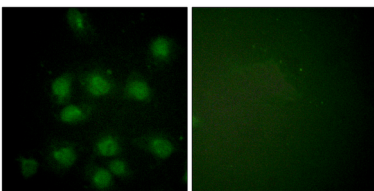
This gene encodes a protein that interacts with the forkhead-associated domain of the Ki-67 antigen. The encoded protein may bind RNA and may play a role in mitosis and cell cycle progression. Multiple pseudogenes exist on chromosomes 5, 10, 12, 15, and 19.[provided by RefSeq, Jan 2009],PTM:Sequentially phosphorylated on Thr-238, Thr-234 and Ser-230. Thr-234 is phosphorylated only when Thr-238 is phosphorylated. Likewise, phosphorylation at Ser-230 requires that Thr-234 and Thr-238 are phosphorylated. Phosphorylation enhances MKI67 binding.,similarity:Contains 1 RRM (RNA recognition motif) domain.,subcellular location:Localizes to mitotic chromosomes in conjunction with MKI67.,subunit:Binds to the FHA domain of MKI67; this interaction is enhanced in mitosis.,

Research Area

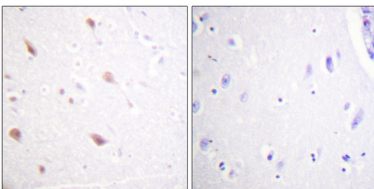
Image Data



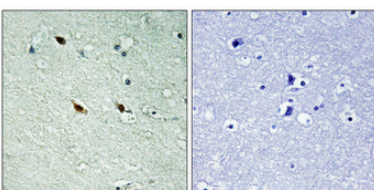
Enzyme-Linked Immunosorbent Assay (Phospho-ELISA) for Immunogen Phosphopeptide (Phospho-left) and Non-Phosphopeptide (Phospho-right) , using NIFK (Phospho-Thr234) Antibody



Immunofluorescence analysis of HUVEC cells, using NIFK (Phospho-Thr234) Antibody. The picture on the right is blocked with the phospho peptide.



Immunohistochemistry analysis of paraffin-embedded human brain, using NIFK (Phospho-Thr234) Antibody. The picture on the right is blocked with the phospho peptide.



Immunohistochemical analysis of paraffin-embedded Human brain. Antibody was diluted at 1:100 (4°,overnight) . High-pressure and temperature Tris-EDTA,pH8.0 was used for antigen retrieval. Negative contrl (right) obtained from antibody was pre-absorbed by immunogen peptide.