

Product Name: NFAT5 (phospho Ser155) Rabbit Polyclonal Antibody**Catalog #: APRab05084**

For research use only.

Summary

Description	Rabbit polyclonal Antibody
Host	Rabbit
Application	WB,IHC
Reactivity	Human,Mouse
Conjugation	Unconjugated
Modification	Phosphorylated
Isotype	IgG
Clonality	Polyclonal
Form	Liquid
Concentration	1mg/ml
Storage	Aliquot and store at -20°C (valid for 12 months). Avoid freeze/thaw cycles.
Shipping	Ice bags
Buffer	Liquid in PBS containing 50% glycerol, 0.5% protective protein and 0.02% New type preservative N.
Purification	Affinity purification

Application

Dilution Ratio	WB 1:500-1:2000,IHC 1:50-1:300
Molecular Weight	200kDa

Antigen Information

Gene Name	NFAT5
Alternative Names	NFAT5; KIAA0827; TONEBP; Nuclear factor of activated T-cells 5; NF-AT5; T-cell transcription factor NFAT5; Tonicity-responsive enhancer-binding protein; TonE-binding protein; TonEBP
Gene ID	10725.0
SwissProt ID	O94916
Immunogen	The antiserum was produced against synthesized peptide derived from human NFAT5/TonEBP around the phosphorylation site of Ser155. AA range:121-170

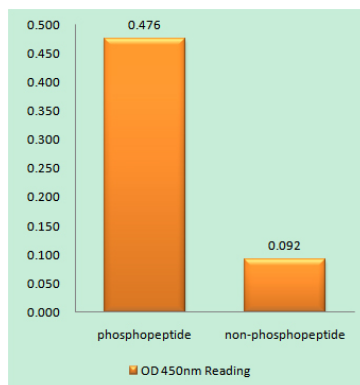
Background

The product of this gene is a member of the nuclear factors of activated T cells family of transcription factors. Proteins belonging to this family play a central role in inducible gene transcription during the immune response. This protein regulates gene expression induced by osmotic stress in mammalian cells. Unlike monomeric members of this protein family, this protein exists as a homodimer and forms stable dimers with DNA elements. Multiple transcript variants encoding different isoforms have been found for this gene. [provided by RefSeq, Jul 2008], alternative products: Experimental confirmation may be lacking for some isoforms, function: Plays a role in the inducible expression of genes. Regulates hypertonicity-induced cellular accumulation of osmolytes., similarity: Contains 1 RHD (Rel-like) domain., subunit: Does not bind with Fos and Jun transcription factors. But might be capable of forming stable dimers with DNA elements., tissue specificity: Highest levels in skeletal muscle, brain, heart and peripheral blood leukocytes. Also expressed in placenta, lung, liver, kidney, pancreas, spleen, thymus, prostate, testis, ovary, small intestine and colon.,

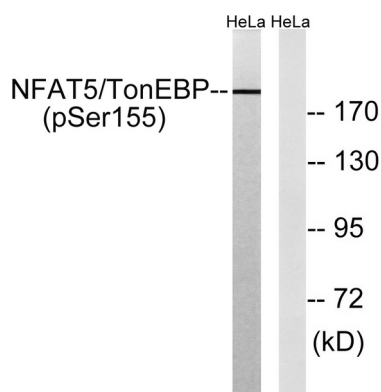
Research Area

WNT;WNT-T CELL Axon guidance;VEGF;Natural killer cell mediated cytotoxicity;T_Cell_Receptor;B_Cell_Antigen;

Image Data



Enzyme-Linked Immunosorbent Assay (Phospho-ELISA) for Immunogen Phosphopeptide (Phospho-left) and Non-Phosphopeptide (Phospho-right) , using NFAT5/TonEBP (Phospho-Ser155) Antibody



Western blot analysis of lysates from HeLa cells treated with forskolin 40nM 30' , using NFAT5/TonEBP (Phospho-Ser155) Antibody. The lane on the right is blocked with the phospho peptide.