

---

**Product Name: MYPT1 (phospho Thr853) Rabbit Polyclonal Antibody****Catalog #: APRab05058**

For research use only.

**Summary**

<b>Description</b>	Rabbit polyclonal Antibody
<b>Host</b>	Rabbit
<b>Application</b>	WB,IHC,ICC/IF,ELISA
<b>Reactivity</b>	Human,Mouse,Rat
<b>Conjugation</b>	Unconjugated
<b>Modification</b>	Phosphorylated
<b>Isotype</b>	IgG
<b>Clonality</b>	Polyclonal
<b>Form</b>	Liquid
<b>Concentration</b>	1mg/ml
<b>Storage</b>	Aliquot and store at -20°C (valid for 12 months). Avoid freeze/thaw cycles.
<b>Shipping</b>	Ice bags
<b>Buffer</b>	Liquid in PBS containing 50% glycerol, 0.5% protective protein and 0.02% New type preservative N.
<b>Purification</b>	Affinity purification

**Application**

<b>Dilution Ratio</b>	WB 1:500-1:2000,IHC 1:100-1:300,ICC/IF 1:50-1:200,ELISA 1:5000-1:10000
<b>Molecular Weight</b>	130kDa

**Antigen Information**

<b>Gene Name</b>	PPP1R12A
<b>Alternative Names</b>	PPP1R12A; MBS; MYPT1; Protein phosphatase 1 regulatory subunit 12A; Myosin phosphatase-targeting subunit 1; Myosin phosphatase target subunit 1; Protein phosphatase myosin-binding subunit
<b>Gene ID</b>	4659.0
<b>SwissProt ID</b>	O14974
<b>Immunogen</b>	The antiserum was produced against synthesized peptide derived from human MYPT1 around the phosphorylation site of Thr853. AA range:621-670

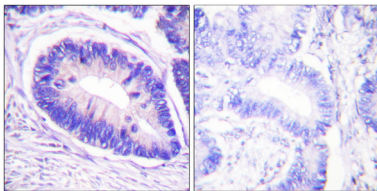
## Background

Myosin phosphatase target subunit 1, which is also called the myosin-binding subunit of myosin phosphatase, is one of the subunits of myosin phosphatase. Myosin phosphatase regulates the interaction of actin and myosin downstream of the guanosine triphosphatase Rho. The small guanosine triphosphatase Rho is implicated in myosin light chain (MLC) phosphorylation, which results in contraction of smooth muscle and interaction of actin and myosin in nonmuscle cells. The guanosine triphosphate (GTP)-bound, active form of RhoA (GTP.RhoA) specifically interacted with the myosin-binding subunit (MBS) of myosin phosphatase, which regulates the extent of phosphorylation of MLC. Rho-associated kinase (Rho-kinase), which is activated by GTP. RhoA, phosphorylated MBS and consequently inactivated myosin phosphatase. Overexpression of RhoA or activated RhoA in NIH 3T3 cells increased phosphofunction:Regulates myosin phosphatase activity.,PTM:Phosphorylated by CIT (Rho-associated kinase) (By similarity). Phosphorylated cooperatively by ROCK1 and CDC42BP on Thr-696. Phosphorylated on upon DNA damage, probably by ATM or ATR.,sequence caution:Contaminating sequence. Potential poly-A sequence.,similarity:Contains 6 ANK repeats.,subcellular location:Along actomyosin filaments and stress fibers.,subunit:PP1 comprises a catalytic subunit, PPP1CA, PPP1CB or PPP1CC, and one or several targeting or regulatory subunits. PPP1R12A mediates binding to myosin. Interacts with ARHA and CIT (By similarity). Binds PPP1R12B, ROCK1 and IL16.,

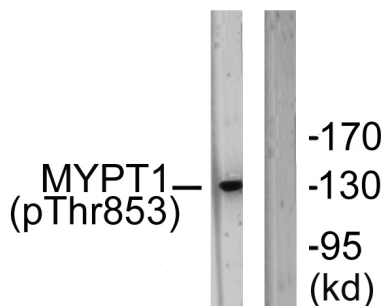
## Research Area

Vascular smooth muscle contraction;Focal adhesion;Long-term potentiation;Regulates Actin and Cytoskeleton;

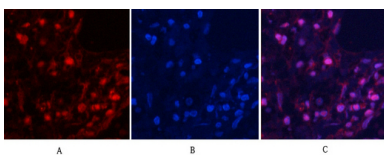
## Image Data



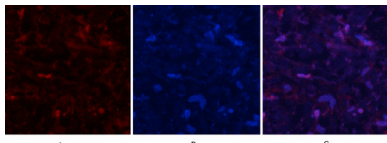
Immunohistochemistry analysis of paraffin-embedded human colon carcinoma, using MYPT1 (Phospho-Thr853) Antibody. The picture on the right is blocked with the phospho peptide.



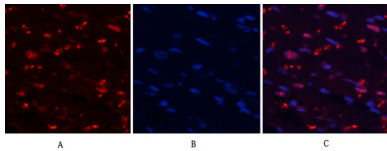
Western blot analysis of lysates from NIH/3T3 cells, using MYPT1 (Phospho-Thr853) Antibody. The lane on the right is blocked with the phospho peptide.



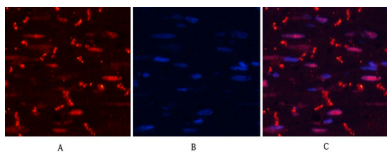
Immunofluorescence analysis of human-lung tissue. 1,MYPT1 (phospho Thr853) Polyclonal Antibody (red) was diluted at 1:200 (4°C,overnight) . 2, Cy3 labeled Secondary antibody was diluted at 1:300 (room temperature, 50min) .3, Picture B: DAPI (blue) 10min. Picture A:Target. Picture B: DAPI. Picture C: merge of A+B



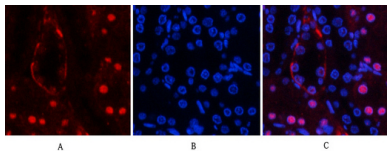
Immunofluorescence analysis of human-lung tissue. 1,MYPT1 (phospho Thr853) Polyclonal Antibody (red) was diluted at 1:200 (4°C,overnight) . 2, Cy3 labled Secondary antibody was diluted at 1:300 (room temperature, 50min) .3, Picture B: DAPI (blue) 10min. Picture A:Target. Picture B: DAPI. Picture C: merge of A+B



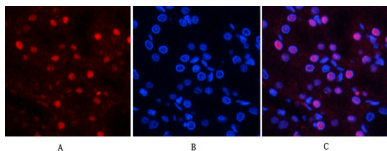
Immunofluorescence analysis of rat-heart tissue. 1,MYPT1 (phospho Thr853) Polyclonal Antibody (red) was diluted at 1:200 (4°C,overnight) . 2, Cy3 labled Secondary antibody was diluted at 1:300 (room temperature, 50min) .3, Picture B: DAPI (blue) 10min. Picture A:Target. Picture B: DAPI. Picture C: merge of A+B



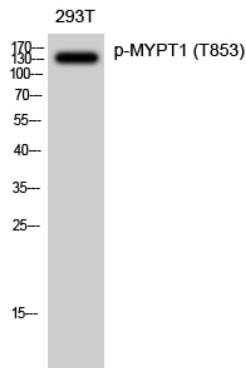
Immunofluorescence analysis of rat-heart tissue. 1,MYPT1 (phospho Thr853) Polyclonal Antibody (red) was diluted at 1:200 (4°C,overnight) . 2, Cy3 labled Secondary antibody was diluted at 1:300 (room temperature, 50min) .3, Picture B: DAPI (blue) 10min. Picture A:Target. Picture B: DAPI. Picture C: merge of A+B



Immunofluorescence analysis of rat-kidney tissue. 1,MYPT1 (phospho Thr853) Polyclonal Antibody (red) was diluted at 1:200 (4°C,overnight) . 2, Cy3 labled Secondary antibody was diluted at 1:300 (room temperature, 50min) .3, Picture B: DAPI (blue) 10min. Picture A:Target. Picture B: DAPI. Picture C: merge of A+B



Immunofluorescence analysis of rat-kidney tissue. 1,MYPT1 (phospho Thr853) Polyclonal Antibody (red) was diluted at 1:200 (4°C,overnight) . 2, Cy3 labled Secondary antibody was diluted at 1:300 (room temperature, 50min) .3, Picture B: DAPI (blue) 10min. Picture A:Target. Picture B: DAPI. Picture C: merge of A+B



Western Blot analysis of 293T cells using Phospho-MYPT1 (T853) Polyclonal Antibody diluted at 1: 2000