
Product Name: Mnk1 (phospho Thr255) Rabbit Polyclonal Antibody**Catalog #: APRab05031**

For research use only.

Summary

Description	Rabbit polyclonal Antibody
Host	Rabbit
Application	WB,IHC
Reactivity	Human,Mouse,Rat
Conjugation	Unconjugated
Modification	Phosphorylated
Isotype	IgG
Clonality	Polyclonal
Form	Liquid
Concentration	1mg/ml
Storage	Aliquot and store at -20°C (valid for 12 months). Avoid freeze/thaw cycles.
Shipping	Ice bags
Buffer	Liquid in PBS containing 50% glycerol, 0.5% protective protein and 0.02% New type preservative N.
Purification	Affinity purification

Application

Dilution Ratio	WB 1:500-1:2000,IHC 1:50-1:300
Molecular Weight	60kDa

Antigen Information

Gene Name	MKNK1
Alternative Names	MKNK1; MNK1; MAP kinase-interacting serine/threonine-protein kinase 1; MAP kinase signal-integrating kinase 1; MAPK signal-integrating kinase 1; Mnk1
Gene ID	8569.0
SwissProt ID	Q9BUB5
Immunogen	The antiserum was produced against synthesized peptide derived from human MNK1 around the phosphorylation site of Thr255. AA range:221-270

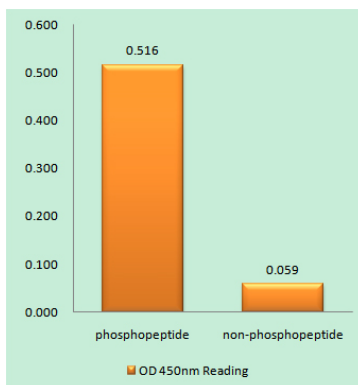
Background

MAP kinase interacting serine/threonine kinase 1(MKNK1) Homo sapiens This gene encodes a Ser/Thr protein kinase that interacts with, and is activated by ERK1 and p38 mitogen-activated protein kinases, and thus may play a role in the response to environmental stress and cytokines. This kinase may also regulate transcription by phosphorylating eIF4E via interaction with the C-terminal region of eIF4G. Alternatively spliced transcript variants have been noted for this gene. [provided by RefSeq, Jan 2012],catalytic activity:ATP + a protein = ADP + a phosphoprotein.,cofactor:Magnesium.,enzyme regulation:Phosphorylated and activated by the p38 kinases and kinases in the Erk pathway.,function:May play a role in the response to environmental stress and cytokines. Appears to regulate transcription by phosphorylating EIF4E, thus increasing the affinity of this protein for the 7-methylguanosine-containing mRNA cap.,PTM: Dual phosphorylation of Thr-250 and Thr-255 activates the kinase. Phosphorylation of Thr-385 activates the kinase.,similarity:Belongs to the protein kinase superfamily.,similarity:Belongs to the protein kinase superfamily. CAMK Ser/Thr protein kinase family.,similarity:Contains 1 protein kinase domain.,subunit:Interacts with the C-terminal regions of EIF4G1 and EIF4G2. Also binds to dephosphorylated ERK1 and ERK2, and to the p38 kinases.,tissue specificity:Ubiquitous.,

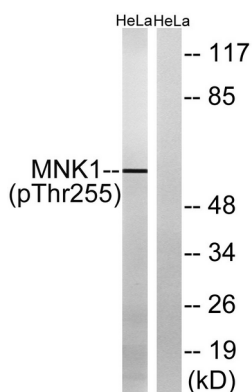
Research Area

MAPK_ERK_Growth;MAPK_G_Protein;Insulin_Receptor;

Image Data



Enzyme-Linked Immunosorbent Assay (Phospho-ELISA) for Immunogen Phosphopeptide (Phospho-left) and Non-Phosphopeptide (Phospho-right) , using MNK1 (Phospho-Thr255) Antibody



Western blot analysis of lysates from HeLa cells treated with Adriamycin 0.5ug/ml 24h, using MNK1 (Phospho-Thr255) Antibody. The lane on the right is blocked with the phospho peptide.