
Product Name: Met (phospho Tyr1356) Rabbit Polyclonal Antibody**Catalog #: APRab05019**

For research use only.

Summary

Description	Rabbit polyclonal Antibody
Host	Rabbit
Application	WB,IHC,ELISA
Reactivity	Human,Mouse,Rat
Conjugation	Unconjugated
Modification	Phosphorylated
Isotype	IgG
Clonality	Polyclonal
Form	Liquid
Concentration	1mg/ml
Storage	Aliquot and store at -20°C (valid for 12 months). Avoid freeze/thaw cycles.
Shipping	Ice bags
Buffer	Liquid in PBS containing 50% glycerol, 0.5% protective protein and 0.02% New type preservative N.
Purification	Affinity purification

Application

Dilution Ratio	WB 1:500-1:2000,IHC 1:50-1:300,ELISA 1:2000-1:20000
Molecular Weight	160kDa

Antigen Information

Gene Name	MET
Alternative Names	MET; Hepatocyte growth factor receptor; HGF receptor; HGF/SF receptor; Proto-oncogene c-Met; Scatter factor receptor; SF receptor; Tyrosine-protein kinase Met
Gene ID	4233.0
SwissProt ID	P08581
Immunogen	The antiserum was produced against synthesized peptide derived from human Met around the phosphorylation site of Tyr1356. AA range:1331-1380

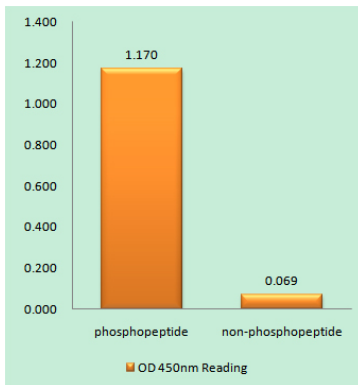
Background

This gene encodes a member of the receptor tyrosine kinase family of proteins and the product of the proto-oncogene MET. The encoded preproprotein is proteolytically processed to generate alpha and beta subunits that are linked via disulfide bonds to form the mature receptor. Further processing of the beta subunit results in the formation of the M10 peptide, which has been shown to reduce lung fibrosis. Binding of its ligand, hepatocyte growth factor, induces dimerization and activation of the receptor, which plays a role in cellular survival, embryogenesis, and cellular migration and invasion. Mutations in this gene are associated with papillary renal cell carcinoma, hepatocellular carcinoma, and various head and neck cancers. Amplification and overexpression of this gene are also associated with multiple human cancers. [provided by RefSeq, May 2016], catalytic activity: ATP + a [protein]-L-tyrosine = ADP + a [protein]-L-tyrosine phosphate., disease: Activation of MET after rearrangement with the TPR gene produces an oncogenic protein., disease: Defects in MET are a cause of hepatocellular carcinoma (HCC) [MIM:114550]., disease: Defects in MET are a cause of hereditary papillary renal carcinoma (HPRC) [MIM:605074]; also known as papillary renal cell carcinoma 2 (RCCP2). HPRC is a form of inherited kidney cancer characterized by a predisposition to develop multiple, bilateral papillary renal tumors. The pattern of inheritance is consistent with autosomal dominant transmission with reduced penetrance., disease: Defects in MET may be associated with gastric cancer., disease: Genetic variations in MET may be associated with susceptibility to autism type 9 (AUTS9) [MIM:611015]. Autism is a neurodevelopmental disorder characterized by disturbance in language, perception and socialization. The disorder is classically defined by a triad of limited or absent verbal communication, a lack of reciprocal social interaction or responsiveness, and restricted, stereotypical, and ritualized patterns of interests and behavior., domain: The kinase domain is involved in SPSB1 binding., function: Receptor for hepatocyte growth factor and scatter factor. Has a tyrosine-protein kinase activity. Functions in cell proliferation, scattering, morphogenesis and survival., online information: C-MET entry, similarity: Belongs to the protein kinase superfamily. Tyr protein kinase family., similarity: Contains 1 protein kinase domain., similarity: Contains 1 Sema domain., similarity: Contains 3 IPT/TIG domains., subunit: Heterodimer formed of an alpha chain (50 kDa) and a beta chain (145 kDa) which are disulfide linked. Binds PLXNB1 and GRB2. Interacts with SPSB1, SPSB2 and SPSB4 (By similarity). Interacts with INPP5D/SHIP1. When phosphorylated at Tyr-1356, interacts with INPPL1/SHIP2. Interacts with RANBP9 and RANBP10, as well as SPSB1, SPSB2, SPSB3 and SPSB4. SPSB1 binding occurs in the presence and in the absence of HGF, however HGF treatment has a positive effect on this interaction. Interacts with MUC20; prevents interaction with GRB2 and suppresses hepatocyte growth factor-induced cell proliferation.,

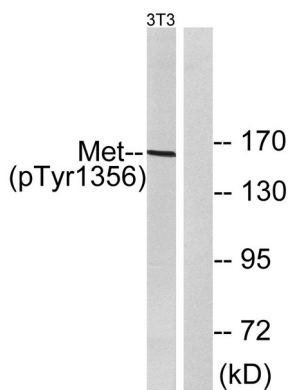
Research Area

Cytokine-cytokine receptor interaction; Endocytosis; Axon guidance; Focal adhesion; Adherens_Junction; Epithelial cell signaling in Helicobacter pylori infection; Pathways in cancer; Colorectal cancer; Renal cell carcinoma; Melanoma;

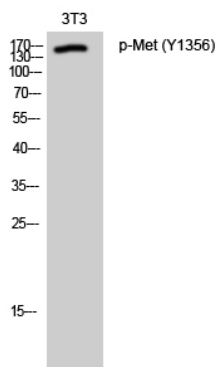
Image Data



Enzyme-Linked Immunosorbent Assay (Phospho-ELISA) for Immunogen Phosphopeptide (Phospho-left) and Non-Phosphopeptide (Phospho-right) , using Met (Phospho-Tyr1356) Antibody



Western blot analysis of lysates from NIH/3T3 cells, using Met (Phospho-Tyr1356) Antibody. The lane on the right is blocked with the phospho peptide.



Western Blot analysis of 3T3 cells using Phospho-Met (Y1356) Polyclonal Antibody