

**Product Name: MEK-1 (phospho Ser298) Rabbit Polyclonal Antibody**  
**Catalog #: APRab05000**

---

## Summary

<b>Production Name</b>	MEK-1 (phospho Ser298) Rabbit Polyclonal Antibody
<b>Description</b>	Rabbit Polyclonal Antibody
<b>Host</b>	Rabbit
<b>Application</b>	WB,IHC-P,IF-P,IF-F,ICC/IF,ELISA
<b>Reactivity</b>	Human,Mouse,Rat

## Performance

<b>Conjugation</b>	Unconjugated
<b>Modification</b>	Phosphorylated
<b>Isotype</b>	IgG
<b>Clonality</b>	Polyclonal
<b>Form</b>	Liquid
<b>Storage</b>	Store at 4°C short term. Aliquot and store at -20°C long term. Avoid freeze/thaw cycles.
<b>Buffer</b>	Liquid in PBS containing 50% glycerol, 0.5% protective protein and 0.02% New type preservative N.
<b>Purification</b>	Affinity purification

## Immunogen

<b>Gene Name</b>	MAP2K1
<b>Alternative Names</b>	MAP2K1; MEK1; PRKMK1; Dual specificity mitogen-activated protein kinase kinase 1; MAP kinase kinase 1; MAPKK 1; MKK1; ERK activator kinase 1; MAPK/ERK kinase 1; MEK 1
<b>Gene ID</b>	5604.0
<b>SwissProt ID</b>	Q02750.The antiserum was produced against synthesized peptide derived from human MEK1 around the phosphorylation site of Ser298. AA range:264-313

## Application

<b>Dilution Ratio</b>	WB 1:500-1:2000, IHC-P 1:100-1:300, ELISA 1:10000, IF-P/IF-F/ICC/IF 1:50-200
-----------------------	--

---

**Product Name: MEK-1 (phospho Ser298) Rabbit  
Polyclonal Antibody  
Catalog #: AP Rab05000**

---

**Molecular Weight**      45kDa

## Background

The protein encoded by this gene is a member of the dual specificity protein kinase family, which acts as a mitogen-activated protein (MAP) kinase kinase. MAP kinases, also known as extracellular signal-regulated kinases (ERKs), act as an integration point for multiple biochemical signals. This protein kinase lies upstream of MAP kinases and stimulates the enzymatic activity of MAP kinases upon wide variety of extra- and intracellular signals. As an essential component of MAP kinase signal transduction pathway, this kinase is involved in many cellular processes such as proliferation, differentiation, transcription regulation and development. [provided by RefSeq, Jul 2008],catalytic activity:ATP + a protein = ADP + a phosphoprotein.,disease:Defects in MAP2K1 are a cause of cardiofaciocutaneous syndrome (CFC syndrome) [MIM:115150]; also known as cardio-facio-cutaneous syndrome. CFC syndrome is characterized by a distinctive facial appearance, heart defects and mental retardation. Heart defects include pulmonic stenosis, atrial septal defects and hypertrophic cardiomyopathy. Some affected individuals present with ectodermal abnormalities such as sparse, friable hair, hyperkeratotic skin lesions and a generalized ichthyosis-like condition. Typical facial features are similar to Noonan syndrome. They include high forehead with bitemporal constriction, hypoplastic supraorbital ridges, downslanting palpebral fissures, a depressed nasal bridge, and posteriorly angulated ears with prominent helices. The inheritance of CFC syndrome is autosomal dominant.,enzyme regulation:Activated by phosphorylation.,function:Catalyzes the concomitant phosphorylation of a threonine and a tyrosine residue in a Thr-Glu-Tyr sequence located in MAP kinases. Activates ERK1 and ERK2 MAP kinases.,PTM:Acetylation by Yersinia yopJ prevents phosphorylation and activation, thus blocking the MAPK signaling pathway.,PTM:Phosphorylation on Ser/Thr by MAP kinase kinase kinases (RAF or MEKK1) regulates positively the kinase activity.,similarity:Belongs to the protein kinase superfamily.,similarity:Belongs to the protein kinase superfamily. STE Ser/Thr protein kinase family. MAP kinase kinase subfamily.,similarity:Contains 1 protein kinase domain.,subunit:Interacts with MORF1 (By similarity). Interacts with Yersinia yopJ.,

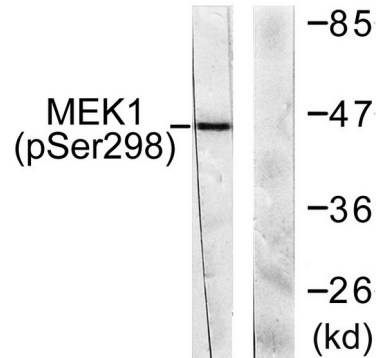
## Research Area

Regulates Angiogenesis; Regulation of Actin Dynamics; Stem cell pathway; T\_Cell\_Receptor; Cell Growth; Insulin Receptor; Toll\_Like; MAPK\_ERK\_Growth;MAPK\_G\_Protein; ErbB/HER; B\_Cell\_Antigen; PI3K/Akt

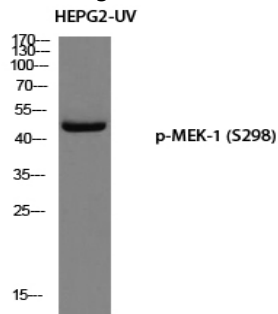
## Image Data

**Product Name: MEK-1 (phospho Ser298) Rabbit Polyclonal Antibody**  
**Catalog #: AP Rab05000**

---



Western blot analysis of lysates from NIH/3T3 cells treated with PDGF 50ng/ml 20', using MEK1 (Phospho-Ser298) Antibody. The lane on the right is blocked with the phospho peptide.



Western blot analysis of HEPG2-UV using p-MEK-1 (S298) antibody. Antibody was diluted at 1:500

## Note

For research use only.