

Product Name: MDM2 (phospho Ser186/S188) Rabbit Polyclonal Antibody**Catalog #: APRab04991**

For research use only.

Summary

Description	Rabbit polyclonal Antibody
Host	Rabbit
Application	WB,ICC/IF,ELISA
Reactivity	Human,Rat,Mouse
Conjugation	Unconjugated
Modification	Phosphorylated
Isotype	IgG
Clonality	Polyclonal
Form	Liquid
Concentration	1mg/ml
Storage	Aliquot and store at -20°C (valid for 12 months). Avoid freeze/thaw cycles.
Shipping	Ice bags
Buffer	Liquid in PBS containing 50% glycerol, 0.5% protective protein and 0.02% New type preservative N.
Purification	Affinity purification

Application

Dilution Ratio WB 1:500-1:2000,ICC/IF 1:200-1:1000,ELISA 1:10000-1:20000

Molecular Weight

Antigen Information

Gene Name	MDM2
Alternative Names	MDM2; E3 ubiquitin-protein ligase Mdm2; Double minute 2 protein; Hdm2; Oncoprotein Mdm2; p53-binding protein Mdm2
Gene ID	4193.0
SwissProt ID	Q00987
Immunogen	The antiserum was produced against synthesized peptide derived from human MDM2 around the phosphorylation site of Ser186 and Ser188. AA range:151-200

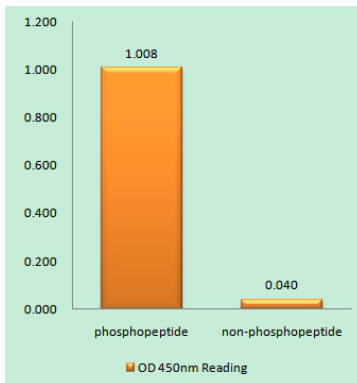
Background

This gene encodes a nuclear-localized E3 ubiquitin ligase. The encoded protein can promote tumor formation by targeting tumor suppressor proteins, such as p53, for proteasomal degradation. This gene is itself transcriptionally-regulated by p53. Overexpression or amplification of this locus is detected in a variety of different cancers. There is a pseudogene for this gene on chromosome 2. Alternative splicing results in a multitude of transcript variants, many of which may be expressed only in tumor cells. [provided by RefSeq, Jun 2013],disease:Seems to be amplified in certain tumors (including soft tissue sarcomas, osteosarcomas and gliomas). A higher frequency of splice variants lacking p53 binding domain sequences was found in late-stage and high-grade ovarian and bladder carcinomas. Four of the splice variants show loss of p53 binding.,domain:Region I is sufficient for binding p53 and inhibiting its G1 arrest and apoptosis functions. It also binds p73 and E2F1. Region II contains most of a central acidic region required for interaction with ribosomal protein L5 and a putative C4-type zinc finger. The RING finger domain which coordinates two molecules of zinc interacts specifically with RNA whether or not zinc is present and mediates the heterooligomerization with MDM4. It is also essential for its ubiquitin ligase E3 activity toward p53 and itself.,function:Inhibits TP53/p53- and TP73/p73-mediated cell cycle arrest and apoptosis by binding its transcriptional activation domain. Functions as a ubiquitin ligase E3, in the presence of E1 and E2, toward p53 and itself. Permits the nuclear export of p53 and targets it for proteasome-mediated proteolysis.,induction:By DNA damage.,miscellaneous:MDM2 RING finger mutations that failed to ubiquitinate p53 in vitro did not target p53 for degradation when expressed in cells.,online information:Mdm2 entry,PTM:Auto-ubiquitinated; which leads to proteasomal degradation.,PTM:Phosphorylated in response to ionizing radiation in an ATM-dependent manner.,similarity:Belongs to the MDM2/MDM4 family.,similarity:Contains 1 RanBP2-type zinc finger.,similarity:Contains 1 RING-type zinc finger.,similarity:Contains 1 SWIB domain.,subcellular location:Expressed predominantly in the nucleoplasm. Interaction with ARF(P14) results in the localization of both proteins to the nucleolus. The nucleolar localization signals in both ARF(P14) and MDM2 may be necessary to allow efficient nucleolar localization of both proteins.,subunit:Binds p53, p73, ARF(P14), ribosomal protein L5 and specifically to RNA. Can interact also with retinoblastoma protein (RB), E1A-associated protein EP300 and the E2F1 transcription factor. Forms a ternary complex with TP53/p53 and WWOX. Interacts with CDKN2AIP, MTBP, TBRG1, USP7, PYHIN1 and UBXN6. Isoform Mdm2-F does not interact with TP53/p53. Interacts with and ubiquitinates HIV-1 Tat.,tissue specificity:Ubiquitous. Isoform Mdm2-A, isoform Mdm2-B, isoform Mdm2-C, isoform Mdm2-D, isoform Mdm2-E, isoform Mdm2-F and isoform Mdm2-G are observed in a range of cancers but absent in normal tissues.,

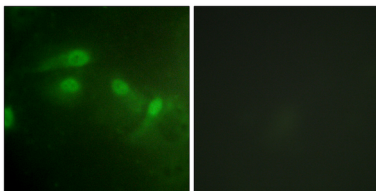
Research Area

Cell_Cycle_G1S;Cell_Cycle_G2M_DNA;p53;Ubiquitin mediated proteolysis;Endocytosis;Pathways in cancer;Glioma;Prostate cancer;Melanoma;Bladder cancer;Chronic myeloid leukemia;

Image Data



Enzyme-Linked Immunosorbent Assay (Phospho-ELISA) for Immunogen Phosphopeptide (Phospho-left) and Non-Phosphopeptide (Phospho-right) , using MDM2 (Phospho-Ser186+Ser188) Antibody



Immunofluorescence analysis of HeLa cells, using MDM2 (Phospho-Ser186+Ser188) Antibody. The picture on the right is blocked with the phospho peptide.