
Product Name: MAPKAPK-2 (phospho Thr334) Rabbit Polyclonal Antibody**Catalog #: APRab04972**

For research use only.

Summary

Description	Rabbit polyclonal Antibody
Host	Rabbit
Application	WB,IHC,ICC/IF,ELISA
Reactivity	Human,Mouse,Rat
Conjugation	Unconjugated
Modification	Phosphorylated
Isotype	IgG
Clonality	Polyclonal
Form	Liquid
Concentration	1mg/ml
Storage	Aliquot and store at -20°C (valid for 12 months). Avoid freeze/thaw cycles.
Shipping	Ice bags
Buffer	Liquid in PBS containing 50% glycerol, 0.5% protective protein and 0.02% New type preservative N.
Purification	Affinity purification

Application

Dilution Ratio	WB 1:500-1:2000,IHC 1:100-1:300,ICC/IF 1:50-1:200,ELISA 1:10000-1:20000
Molecular Weight	49kDa

Antigen Information

Gene Name	MAPKAPK2
Alternative Names	MAPKAPK2; MAP kinase-activated protein kinase 2; MAPK-activated protein kinase 2; MAPKAP kinase 2; MAPKAP-K2; MAPKAPK-2; MK-2; MK2
Gene ID	9261.0
SwissProt ID	P49137
Immunogen	The antiserum was produced against synthesized peptide derived from human MAPKAPK2 around the phosphorylation site of Thr334. AA range:300-349

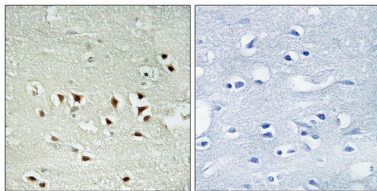
Background

This gene encodes a member of the Ser/Thr protein kinase family. This kinase is regulated through direct phosphorylation by p38 MAP kinase. In conjunction with p38 MAP kinase, this kinase is known to be involved in many cellular processes including stress and inflammatory responses, nuclear export, gene expression regulation and cell proliferation. Heat shock protein HSP27 was shown to be one of the substrates of this kinase in vivo. Two transcript variants encoding two different isoforms have been found for this gene. [provided by RefSeq, Jul 2008],catalytic activity:ATP + a protein = ADP + a phosphoprotein.,enzyme regulation:Seems to be activated by two distinct pathways: the first involves the stimulation of p42/p44 MAPK by growth factors, the second, triggered by stress and heat shock, depends on the activation of MPK2 and upstream MAPKK/MAPKKK.,function:Its physiological substrate seems to be the small heat shock protein (HSP27/HSP25). In vitro can phosphorylate glycogen synthase at 'Ser-7' and tyrosine hydroxylase (on 'Ser-19' and 'Ser-40'). This kinase phosphorylates Ser in the peptide sequence, Hyd-X-R-X(2)-S, where Hyd is a large hydrophobic residue (By similarity). Mediates both ERK and p38 MAPK/MAPK14 dependent neutrophil responses. Participates in TNF alpha-stimulated exocytosis of secretory vesicles in neutrophils. Plays a role in phagocytosis-induced respiratory burst activity.,PTM:Phosphorylated and activated by MAP kinase.,similarity:Belongs to the protein kinase superfamily. CAMK Ser/Thr protein kinase family.,similarity:Contains 1 protein kinase domain.,subunit:Interacts with PHC2.,tissue specificity:Expressed in all tissues examined.,

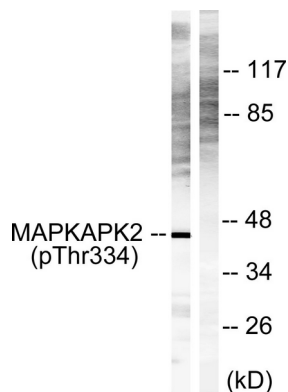
Research Area

MAPK_ERK_Growth;MAPK_G_Protein;VEGF;Neurotrophin;

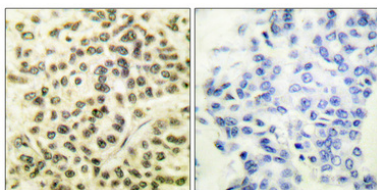
Image Data



Immunohistochemistry analysis of paraffin-embedded human brain, using MAPKAPK2 (Phospho-Thr334) Antibody. The picture on the right is blocked with the phospho peptide.



Western blot analysis of lysates from NIH/3T3 cells, using MAPKAPK2 (Phospho-Thr334) Antibody. The lane on the right is blocked with the phospho peptide.



Immunohistochemical analysis of paraffin-embedded Human breast cancer. Antibody was diluted at 1:100 (4°,overnight) . High-pressure and temperature Tris-EDTA,pH8.0 was used for antigen retrieval. Negative contrl (right) obtained from antibody was pre-absorbed by immunogen peptide.

