

Product Name: KIF2C (phospho Ser95) Rabbit Polyclonal Antibody**Catalog #: APRab04920**

For research use only.

Summary

Description	Rabbit polyclonal Antibody
Host	Rabbit
Application	WB,IHC
Reactivity	Human,Mouse
Conjugation	Unconjugated
Modification	Phosphorylated
Isotype	IgG
Clonality	Polyclonal
Form	Liquid
Concentration	1mg/ml
Storage	Aliquot and store at -20°C (valid for 12 months). Avoid freeze/thaw cycles.
Shipping	Ice bags
Buffer	Liquid in PBS containing 50% glycerol, 0.5% protective protein and 0.02% New type preservative N.
Purification	Affinity purification

Application

Dilution Ratio	WB 1:500-1:2000,IHC 1:50-1:300
Molecular Weight	80kDa

Antigen Information

Gene Name	KIF2C
Alternative Names	KIF2C; KNSL6; Kinesin-like protein KIF2C; Kinesin-like protein 6; Mitotic centromere-associated kinesin; MCAK
Gene ID	11004.0
SwissProt ID	Q99661
Immunogen	The antiserum was produced against synthesized peptide derived from human KIF2C around the phosphorylation site of Ser95. AA range:61-110

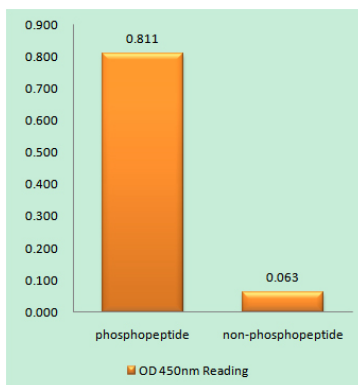
Background

kinesin family member 2C(KIF2C) Homo sapiens This gene encodes a kinesin-like protein that functions as a microtubule-dependent molecular motor. The encoded protein can depolymerize microtubules at the plus end, thereby promoting mitotic chromosome segregation. Alternative splicing results in multiple transcript variants. [provided by RefSeq, Jul 2014],function:Present throughout the cell cycle, associates with centromeres at early prophase, and remains associated with the centromere until after telophase.,PTM:Phosphorylated upon DNA damage, probably by ATM or ATR.,similarity:Belongs to the kinesin-like protein family.,similarity:Belongs to the kinesin-like protein family. MCAK/KIF2 subfamily.,similarity:Contains 1 kinesin-motor domain.,subunit:Interacts with CENPH.,tissue specificity:Expressed at high levels in thymus and testis, at low levels in small intestine, the mucosal lining of colon, and placenta, and at very low levels in spleen and ovary; expression is not detected in prostate, peripheral blood Leukocytes, heart, brain, lung, liver, skeletal muscle, kidney or pancreas.,

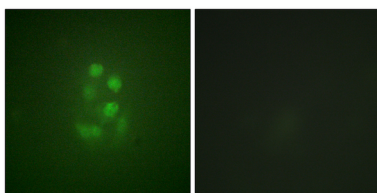
Research Area

Signal Transduction

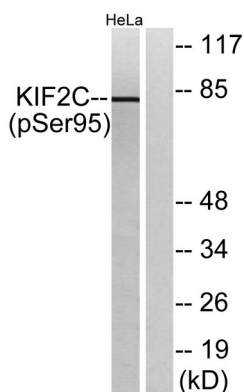
Image Data



Enzyme-Linked Immunosorbent Assay (Phospho-ELISA) for Immunogen Phosphopeptide (Phospho-left) and Non-Phosphopeptide (Phospho-right) , using KIF2C (Phospho-Ser95) Antibody



Immunofluorescence analysis of A549 cells, using KIF2C (Phospho-Ser95) Antibody. The picture on the right is blocked with the phospho peptide.



Western blot analysis of lysates from HeLa cells treated with TNF 10ng/ml 30' , using KIF2C (Phospho-Ser95) Antibody. The lane on the right is blocked with the phospho peptide.