

Product Name: Integrin β 1 (phospho Thr789) Rabbit Polyclonal Antibody**Catalog #: APRab04852**

For research use only.

Summary

Description	Rabbit polyclonal Antibody
Host	Rabbit
Application	WB,IHC,ICC/IF,ELISA
Reactivity	Human,Mouse,Rat
Conjugation	Unconjugated
Modification	Phosphorylated
Isotype	IgG
Clonality	Polyclonal
Form	Liquid
Concentration	1mg/ml
Storage	Aliquot and store at -20°C (valid for 12 months). Avoid freeze/thaw cycles.
Shipping	Ice bags
Buffer	Liquid in PBS containing 50% glycerol, 0.5% protective protein and 0.02% New type preservative N.
Purification	Affinity purification

Application

Dilution Ratio	WB 1:500-1:2000,IHC 1:100-1:300,ICC/IF 1:200-1:1000,ELISA 1:5000-1:10000
Molecular Weight	90kDa

Antigen Information

Gene Name	ITGB1
Alternative Names	ITGB1; FN1RB; MDF2; MSK12; Integrin beta-1; Fibronectin receptor subunit beta; VLA-4 subunit beta; CD antigen CD29
Gene ID	3688.0
SwissProt ID	P05556
Immunogen	The antiserum was produced against synthesized peptide derived from human Integrin beta1 around the phosphorylation site of Thr789. AA range:749-798

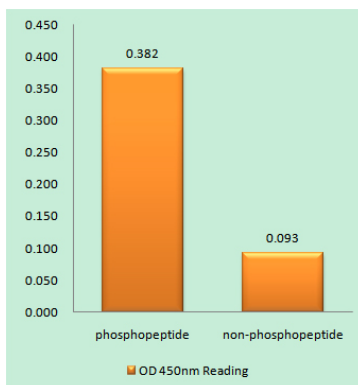
Background

CD29 is a 130 kD single chain type I glycoprotein also known as integrin $\beta 1$, VLA- β chain, or gp11a. It is broadly expressed on a majority of hematopoietic and non-hematopoietic cells, including leukocytes (although at low level on granulocytes), platelets, fibroblasts, endothelial cells, epithelial cells, and mast cells. CD29 is a member of the integrin family. It is non-covalently associated with integrin $\alpha 1$ - $\alpha 6$ chains to form VLA-1 to VLA-6 molecules, respectively. Integrins, which include CD29, bind to several cell surface (e.g. VCAM-1, MadCAM-1) and extracellular matrix molecules. CD29 acts as a fibronectin receptor and is involved in a variety of cell-cell and cell-matrix interactions.

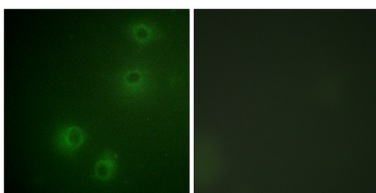
Research Area

Axon guidance;Focal adhesion;ECM-receptor interaction;Cell adhesion molecules (CAMs);Leukocyte transendothelial migration;Regulates Actin and Cytoskeleton;Pathogenic Escherichia coli infection;Pathways in cancer;Small cell lung cancer;Hypertrophic cardiomyopathy (HCM);Arrhythmogenic right ventricular cardiomyopathy (ARVC);Dilated cardiomyopathy;

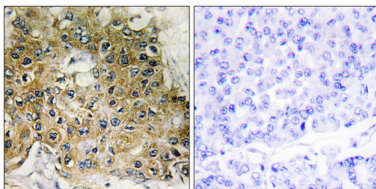
Image Data



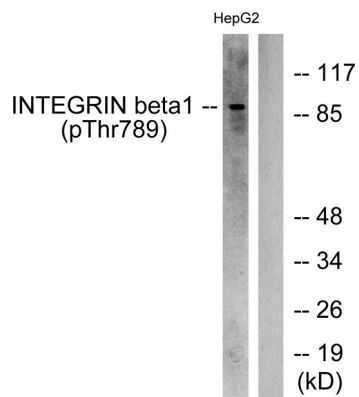
Enzyme-Linked Immunosorbent Assay (Phospho-ELISA) for Immunogen Phosphopeptide (Phospho-left) and Non-Phosphopeptide (Phospho-right) , using Integrin beta1 (Phospho-Thr789) Antibody



Immunofluorescence analysis of COS7 cells, using Integrin beta1 (Phospho-Thr789) Antibody. The picture on the right is blocked with the phospho peptide.



Immunohistochemistry analysis of paraffin-embedded human breast carcinoma, using Integrin beta1 (Phospho-Thr789) Antibody. The picture on the right is blocked with the phospho peptide.



Western blot analysis of lysates from HepG2 cells treated with Ca^{2+} 40uM 30', using Integrin beta1 (Phospho-Thr789) Antibody. The lane on the right is blocked with the phospho peptide.