

Product Name: Insulin R (phospho Tyr1361) Rabbit Polyclonal Antibody**Catalog #:** APRab04848

For research use only.

Summary

Description	Rabbit polyclonal Antibody
Host	Rabbit
Application	WB,IHC,ICC/IF,ELISA
Reactivity	Human,Mouse,Rat
Conjugation	Unconjugated
Modification	Phosphorylated
Isotype	IgG
Clonality	Polyclonal
Form	Liquid
Concentration	1mg/ml
Storage	Aliquot and store at -20°C (valid for 12 months). Avoid freeze/thaw cycles.
Shipping	Ice bags
Buffer	Liquid in PBS containing 50% glycerol, 0.5% protective protein and 0.02% New type preservative N.
Purification	Affinity purification

Application

Dilution Ratio	WB 1:500-1:2000,IHC 1:100-1:300,ICC/IF 1:50-1:200,ELISA 1:5000-1:20000
Molecular Weight	95kDa

Antigen Information

Gene Name	INSR
Alternative Names	INSR; Insulin receptor; IR; CD antigen CD220
Gene ID	3643.0
SwissProt ID	P06213
Immunogen	The antiserum was produced against synthesized peptide derived from human IR around the phosphorylation site of Tyr1361. AA range:1331-1380

Background

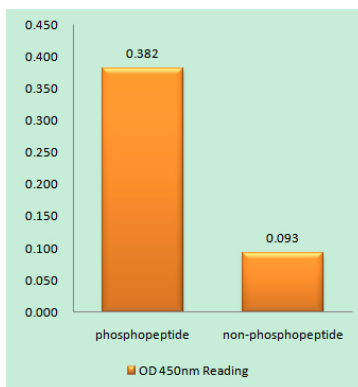
This receptor binds insulin-like growth factor with a high affinity. It has tyrosine kinase activity. The insulin-like growth factor I

receptor plays a critical role in transformation events. Cleavage of the precursor generates alpha and beta subunits. It is highly overexpressed in most malignant tissues where it functions as an anti-apoptotic agent by enhancing cell survival. Alternatively spliced transcript variants encoding distinct isoforms have been found for this gene. [provided by RefSeq, May 2014]

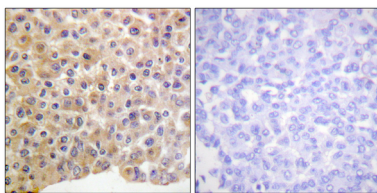
Research Area

Regulation of Actin Dynamics; Insulin Receptor; AMPK; Adherens_Junction

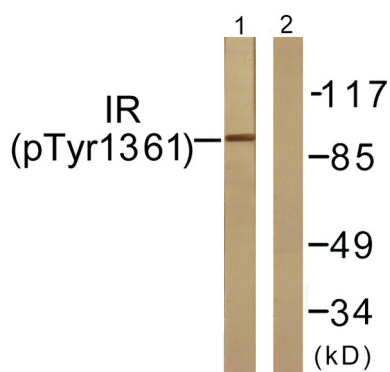
Image Data



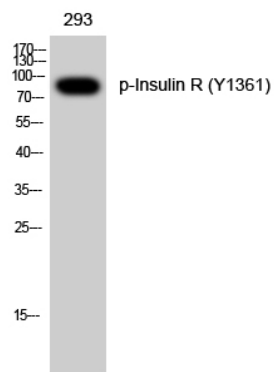
Enzyme-Linked Immunosorbent Assay (Phospho-ELISA) for Immunogen Phosphopeptide (Phospho-left) and Non-Phosphopeptide (Phospho-right) , using IR (Phospho-Tyr1361) Antibody



Immunohistochemistry analysis of paraffin-embedded human breast carcinoma, using IR (Phospho-Tyr1361) Antibody. The picture on the right is blocked with the phospho peptide.



Western blot analysis of lysates from 293 cells treated with Heat shock, using IR (Phospho-Tyr1361) Antibody. The lane on the right is blocked with the phospho peptide.



Western Blot analysis of 293 cells using Phospho-Insulin R (Y1361) Polyclonal Antibody