

**Product Name: IKKy (phospho Ser85) Rabbit Polyclonal Antibody****Catalog #: APRab04832**

For research use only.

**Summary**

<b>Description</b>	Rabbit polyclonal Antibody
<b>Host</b>	Rabbit
<b>Application</b>	WB,IHC,ICC/IF,ELISA
<b>Reactivity</b>	Human,Rat,Mouse
<b>Conjugation</b>	Unconjugated
<b>Modification</b>	Phosphorylated
<b>Isotype</b>	IgG
<b>Clonality</b>	Polyclonal
<b>Form</b>	Liquid
<b>Concentration</b>	1mg/ml
<b>Storage</b>	Aliquot and store at -20°C (valid for 12 months). Avoid freeze/thaw cycles.
<b>Shipping</b>	Ice bags
<b>Buffer</b>	Liquid in PBS containing 50% glycerol, 0.5% protective protein and 0.02% New type preservative N.
<b>Purification</b>	Affinity purification

**Application**

<b>Dilution Ratio</b>	WB 1:500-1:2000,IHC 1:100-1:300,ICC/IF 1:50-1:200,ELISA 1:20000-1:40000
<b>Molecular Weight</b>	48kDa

**Antigen Information**

<b>Gene Name</b>	IKBKG
<b>Alternative Names</b>	IKBKG; FIP3; NEMO; NF-kappa-B essential modulator; NEMO; FIP-3; Ikb kinase-associated protein 1; IKKAP1; Inhibitor of nuclear factor kappa-B kinase subunit gamma; I-kappa-B kinase subunit gamma; IKK-gamma; IKKG; Ikb kinase subunit gamma; NF
<b>Gene ID</b>	8517.0
<b>SwissProt ID</b>	Q9Y6K9
<b>Immunogen</b>	The antiserum was produced against synthesized peptide derived from human IKK-gamma around the phosphorylation site of Ser85. AA range:51-100

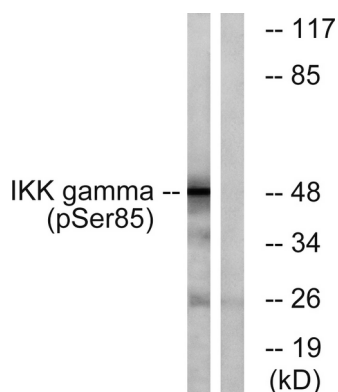
## Background

This gene encodes the regulatory subunit of the inhibitor of kappaB kinase (IKK) complex, which activates NF-kappaB resulting in activation of genes involved in inflammation, immunity, cell survival, and other pathways. Mutations in this gene result in incontinentia pigmenti, hypohidrotic ectodermal dysplasia, and several other types of immunodeficiencies. A pseudogene highly similar to this locus is located in an adjacent region of the X chromosome. [provided by RefSeq, Mar 2016],

## Research Area

MAPK\_ERK\_Growth;MAPK\_G\_Protein;Chemokine;Apoptosis\_Inhibition;Apoptosis\_Mitochondrial;Apoptosis\_Overview;Toll\_Like ;NOD-like receptor;RIG-I-like receptor;Cytosolic DNA-sensing pathway;T\_Cell\_Receptor;B\_Cell\_Antigen;Adipocytokine;Epithelial cell signaling in Helicobacter pylori infection;Pathways in cancer;Pancreatic cancer;Prostate cancer;Chronic myeloid leukemia;Acute myeloid leukemia;Small cell lung cancer;Primary immunodeficiency;

## Image Data



Western blot analysis of lysates from HepG2 cells treated with Anisomycin 0.5uM 5h, using IKK-gamma (Phospho-Ser85) Antibody. The lane on the right is blocked with the phospho peptide.