

---

**Product Name: HSP90 $\beta$  (phospho Ser254) Rabbit Polyclonal Antibody****Catalog #: APRab04808**

For research use only.

**Summary**

<b>Description</b>	Rabbit polyclonal Antibody
<b>Host</b>	Rabbit
<b>Application</b>	WB,IHC,ICC/IF,ELISA
<b>Reactivity</b>	Human,Mouse,Rat,Monkey
<b>Conjugation</b>	Unconjugated
<b>Modification</b>	Phosphorylated
<b>Isotype</b>	IgG
<b>Clonality</b>	Polyclonal
<b>Form</b>	Liquid
<b>Concentration</b>	1mg/ml
<b>Storage</b>	Aliquot and store at -20°C (valid for 12 months). Avoid freeze/thaw cycles.
<b>Shipping</b>	Ice bags
<b>Buffer</b>	Liquid in PBS containing 50% glycerol, 0.5% protective protein and 0.02% New type preservative N.
<b>Purification</b>	Affinity purification

**Application**

<b>Dilution Ratio</b>	WB 1:500-1:2000,IHC 1:100-1:300,ICC/IF 1:200-1:1000,ELISA 1:20000-1:40000
<b>Molecular Weight</b>	90kDa

**Antigen Information**

<b>Gene Name</b>	HSP90AB1
<b>Alternative Names</b>	HSP90AB1; HSP90B; HSPC2; HSPCB; Heat shock protein HSP 90-beta; HSP 90; Heat shock 84 kDa; HSP 84; HSP84
<b>Gene ID</b>	3326.0
<b>SwissProt ID</b>	P08238
<b>Immunogen</b>	The antiserum was produced against synthesized peptide derived from human HSP90B around the phosphorylation site of Ser254. AA range:226-275

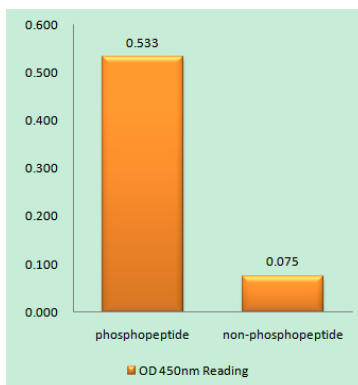
**Background**

This gene encodes a member of the heat shock protein 90 family; these proteins are involved in signal transduction, protein folding and degradation and morphological evolution. This gene encodes the constitutive form of the cytosolic 90 kDa heat-shock protein and is thought to play a role in gastric apoptosis and inflammation. Alternative splicing results in multiple transcript variants. Pseudogenes have been identified on multiple chromosomes. [provided by RefSeq, Dec 2012],function:Molecular chaperone. Has ATPase activity.,PTM:Phosphorylated upon DNA damage, probably by ATM or ATR.,similarity:Belongs to the heat shock protein 90 family.,subcellular location:Identified by mass spectrometry in melanosome fractions from stage I to stage IV.,subunit:Homodimer. Interacts with TP53/p53 (By similarity). Interacts with UNC45A. Binding to UNC45A involves 2 UNC45A monomers per HSP90AB1 dimer.,

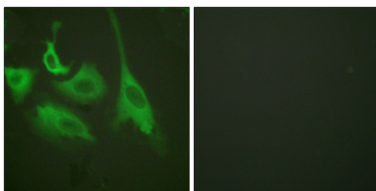
## Research Area

PI3K/Akt; Protein\_Acetylation

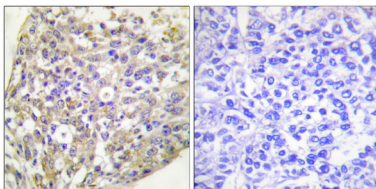
## Image Data



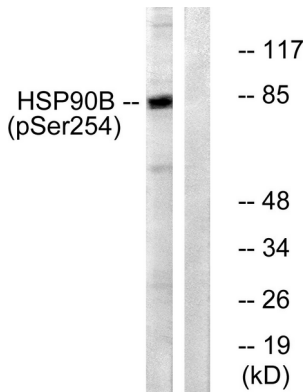
Enzyme-Linked Immunosorbent Assay ( Phospho-ELISA ) for Immunogen Phosphopeptide (Phospho-left) and Non-Phosphopeptide (Phospho-right) , using HSP90B (Phospho-Ser254) Antibody



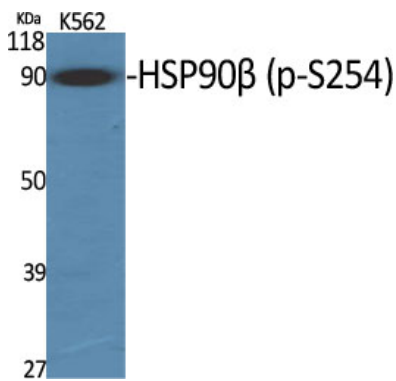
Immunofluorescence analysis of HeLa cells treated with TNF-a 20nM 15 ' ; using HSP90B (Phospho-Ser254) Antibody. The picture on the right is blocked with the phospho peptide.



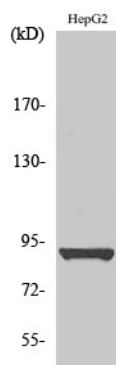
Immunohistochemistry analysis of paraffin-embedded human breast carcinoma, using HSP90B (Phospho-Ser254) Antibody. The picture on the right is blocked with the phospho peptide.



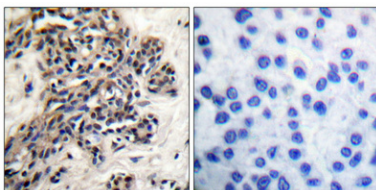
Western blot analysis of lysates from HeLa cells treated with TNF- $\alpha$  10ng/ml 30 min, using HSP90B (Phospho-Ser254) Antibody. The lane on the right is blocked with the phospho peptide.



Western Blot analysis of various cells using Phospho-HSP90 $\beta$  (S254) Polyclonal Antibody



Western Blot analysis of HepG2 cells using Phospho-HSP90 $\beta$  (S254) Polyclonal Antibody



Immunohistochemical analysis of paraffin-embedded Human breast cancer. Antibody was diluted at 1:100 (4 $^{\circ}$ , overnight). High-pressure and temperature Tris-EDTA, pH8.0 was used for antigen retrieval. Negative control (right) obtained from antibody was pre-absorbed by immunogen peptide.