
Product Name: HSP20 (phospho Ser16) Rabbit Polyclonal Antibody**Catalog #: APRab04802**

For research use only.

Summary

Description	Rabbit polyclonal Antibody
Host	Rabbit
Application	IHC,ICC/IF,ELISA
Reactivity	Human,Mouse,Rat
Conjugation	Unconjugated
Modification	Phosphorylated
Isotype	IgG
Clonality	Polyclonal
Form	Liquid
Concentration	1mg/ml
Storage	Aliquot and store at -20°C (valid for 12 months). Avoid freeze/thaw cycles.
Shipping	Ice bags
Buffer	Liquid in PBS containing 50% glycerol, 0.5% protective protein and 0.02% New type preservative N.
Purification	Affinity purification

Application

Dilution Ratio IHC 1:100-1:300,ICC/IF 1:200-1:1000,ELISA 1:5000-1:10000

Molecular Weight

Antigen Information

Gene Name	HSPB6
Alternative Names	HSPB6; Heat shock protein beta-6; HspB6; Heat shock 20 kDa-like protein p20
Gene ID	126393.0
SwissProt ID	O14558
Immunogen	The antiserum was produced against synthesized peptide derived from human HSP20 around the phosphorylation site of Ser16. AA range:5-54

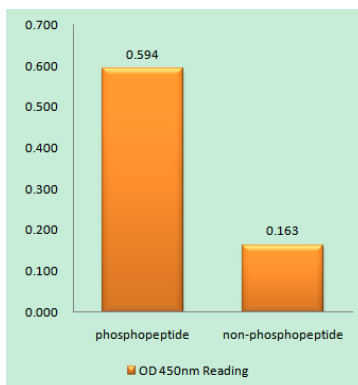
Background

This locus encodes a heat shock protein. The encoded protein likely plays a role in smooth muscle relaxation. [provided by

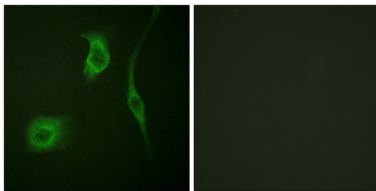
RefSeq, Jan 2012],PTM:The N-terminus is blocked.,similarity:Belongs to the small heat shock protein (HSP20) family.,subunit:May exist as disulfide-linked dimer and monomer.,

Research Area

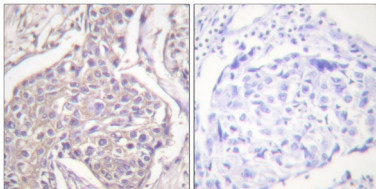
Image Data



Enzyme-Linked Immunosorbent Assay (Phospho-ELISA) for Immunogen Phosphopeptide (Phospho-left) and Non-Phosphopeptide (Phospho-right) , using HSP20 (Phospho-Ser16) Antibody



Immunofluorescence analysis of HeLa cells, using HSP20 (Phospho-Ser16) Antibody. The picture on the right is blocked with the phospho peptide.



Immunohistochemistry analysis of paraffin-embedded human breast carcinoma, using HSP20 (Phospho-Ser16) Antibody. The picture on the right is blocked with the phospho peptide.