
Product Name: Hrs (phospho Tyr334) Rabbit Polyclonal Antibody**Catalog #: APRab04795**

For research use only.

Summary

Description	Rabbit polyclonal Antibody
Host	Rabbit
Application	WB,IHC,ICC/IF,ELISA
Reactivity	Human,Mouse,Rat
Conjugation	Unconjugated
Modification	Phosphorylated
Isotype	IgG
Clonality	Polyclonal
Form	Liquid
Concentration	1mg/ml
Storage	Aliquot and store at -20°C (valid for 12 months). Avoid freeze/thaw cycles.
Shipping	Ice bags
Buffer	Liquid in PBS containing 50% glycerol, 0.5% protective protein and 0.02% New type preservative N.
Purification	Affinity purification

Application

Dilution Ratio	WB 1:500-1:2000,IHC 1:100-1:300,ICC/IF 1:200-1:1000,ELISA 1:5000-1:20000
Molecular Weight	86kDa

Antigen Information

Gene Name	HGS
Alternative Names	HGS; HRS; Hepatocyte growth factor-regulated tyrosine kinase substrate; Hrs; Protein pp110
Gene ID	9146.0
SwissProt ID	O14964
Immunogen	The antiserum was produced against synthesized peptide derived from human HRS around the phosphorylation site of Tyr334. AA range:301-350

Background

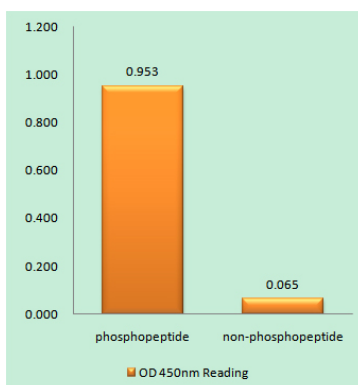
The protein encoded by this gene regulates endosomal sorting and plays a critical role in the recycling and degradation of

membrane receptors. The encoded protein sorts monoubiquitinated membrane proteins into the multivesicular body, targeting these proteins for lysosome-dependent degradation. [provided by RefSeq, Dec 2010],domain:Has a double-sided UIM that can bind 2 ubiquitin molecules, one on each side of the helix.,function:Involved in intracellular signal transduction mediated by cytokines and growth factors. When associated with STAM, it suppresses DNA signaling upon stimulation by IL-2 and GM-CSF. Could be a direct effector of PI3-kinase in vesicular pathway via early endosomes and may regulate trafficking to early and late endosomes by recruiting clathrin. May concentrate ubiquitinated receptors within clathrin-coated regions. Involved in down-regulation of receptor tyrosine kinase via multivesicular body (MVBs) when complexed with STAM (ESCRT-0 complex). The ESCRT-0 complex binds ubiquitin and acts as sorting machinery that recognizes ubiquitinated receptors and transfers them to further sequential lysosomal sorting/trafficking processes. May contribute to the efficient recruitment of SMADs to the activin receptor complex.,PTM:Phosphorylated on Tyr-334. A minor site of phosphorylation on Tyr-329 is detected (By similarity). Phosphorylation occurs in response to EGF, IL-2, GM-CSF and HGF.,similarity:Contains 1 FYVE-type zinc finger.,similarity:Contains 1 UIM (ubiquitin-interacting motif) repeat.,similarity:Contains 1 VHS domain.,subunit:Component of the ESCRT-0 complex composed of STAM or STAM2 and HGS. Part of a complex at least composed of HSG, STAM2 (or probably STAM) and EPS15. Interacts with STAM. Interacts with STAM2. Interacts with EPS15; the interaction is direct, calcium-dependent and inhibited by SNAP25. Interacts with NF2; the interaction is direct. Interacts with ubiquitin; the interaction is direct. Interacts with VPS37C. Interacts with SMAD1, SMAD2 and SMAD3. Interacts with TSG101; the interaction mediates the association with the ESCRT-I complex. Interacts with SNAP25; the interaction is direct and decreases with addition of increasing concentrations of free calcium. Interacts with SNX1; the interaction is direct. Component of a 550 kDa membrane complex at least composed of HGS and SNX1 but excluding EGFR.,tissue specificity:Ubiquitous expression in adult and fetal tissues with higher expression in testis and peripheral blood leukocytes.,

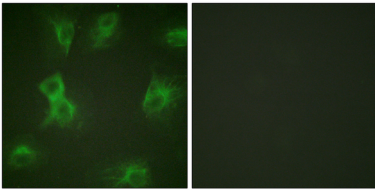
Research Area

Endocytosis;

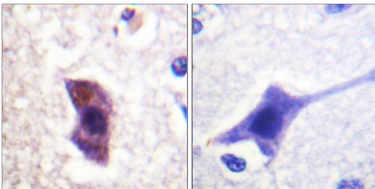
Image Data



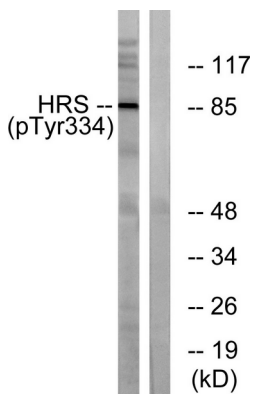
Enzyme-Linked Immunosorbent Assay (Phospho-ELISA) for Immunogen Phosphopeptide (Phospho-left) and Non-Phosphopeptide (Phospho-right) , using HRS (Phospho-Tyr334) Antibody



Immunofluorescence analysis of HeLa cells treated with Forskolin 40nM 15', using HRS (Phospho-Tyr334) Antibody. The picture on the right is blocked with the phospho peptide.



Immunohistochemistry analysis of paraffin-embedded human brain, using HRS (Phospho-Tyr334) Antibody. The picture on the right is blocked with the phospho peptide.



Western blot analysis of lysates from HepG2 cells treated with PMA 125ng/ml 30', using HRS (Phospho-Tyr334) Antibody. The lane on the right is blocked with the phospho peptide.