
Product Name: GSK3 α / β (phospho Tyr279/216) Rabbit Polyclonal Antibody**Catalog #: APRab04752**

For research use only.

Summary

Description	Rabbit polyclonal Antibody
Host	Rabbit
Application	WB,IHC,ICC/IF,ELISA
Reactivity	Human,Mouse,Rat
Conjugation	Unconjugated
Modification	Phosphorylated
Isotype	IgG
Clonality	Polyclonal
Form	Liquid
Concentration	1mg/ml
Storage	Aliquot and store at -20°C (valid for 12 months). Avoid freeze/thaw cycles.
Shipping	Ice bags
Buffer	Liquid in PBS containing 50% glycerol, 0.5% protective protein and 0.02% New type preservative N.
Purification	Affinity purification

Application

Dilution Ratio	WB 1:500-1:2000,IHC 1:100-1:300,ICC/IF 1:50-1:200,ELISA 1:10000-1:20000
Molecular Weight	51,46kDa

Antigen Information

Gene Name	GSK3A/GSK3B GSK3A; Glycogen synthase kinase-3 alpha; GSK-3 alpha; Serine/threonine-protein kinase
Alternative Names	GSK3A; GSK3B; Glycogen synthase kinase-3 beta; GSK-3 beta; Serine/threonine-protein kinase GSK3B
Gene ID	2931.0
SwissProt ID	P49840/P49841
Immunogen	The antiserum was produced against synthesized peptide derived from human GSK3 alpha/beta around the phosphorylation site of Tyr279/216. AA range:246-295

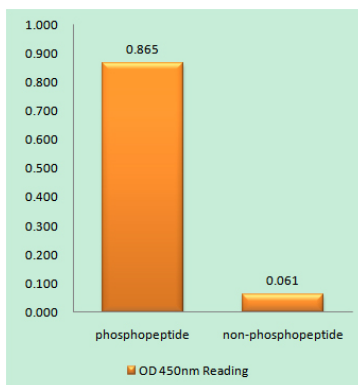
Background

glycogen synthase kinase 3 alpha(GSK3A) Homo sapiens This gene encodes a multifunctional Ser/Thr protein kinase that is implicated in the control of several regulatory proteins including glycogen synthase, and transcription factors, such as JUN. It also plays a role in the WNT and PI3K signaling pathways, as well as regulates the production of beta-amyloid peptides associated with Alzheimer's disease. [provided by RefSeq, Oct 2011],catalytic activity:ATP + [tau protein] = ADP + [tau protein] phosphate.,function:Implicated in the hormonal control of several regulatory proteins including glycogen synthase, MYB and the transcription factor JUN.,similarity:Belongs to the protein kinase superfamily.,similarity:Belongs to the protein kinase superfamily. CMGC Ser/Thr protein kinase family. GSK-3 subfamily.,similarity:Contains 1 protein kinase domain.,subunit:Monomer.,

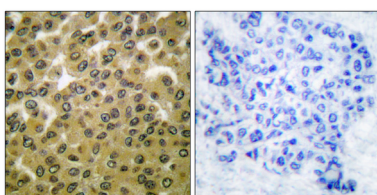
Research Area

Chemokine;

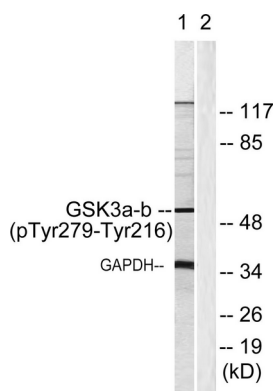
Image Data



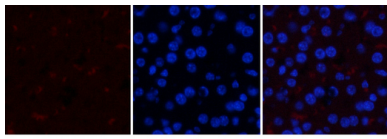
Enzyme-Linked Immunosorbent Assay (Phospho-ELISA) for Immunogen Phosphopeptide (Phospho-left) and Non-Phosphopeptide (Phospho-right) , using GSK3 alpha/beta (Phospho-Tyr279/216) Antibody



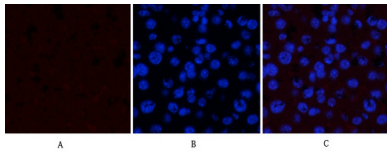
Immunohistochemistry analysis of paraffin-embedded human breast carcinoma, using GSK3 alpha/beta (Phospho-Tyr279/216) Antibody. The picture on the right is blocked with the phospho peptide.



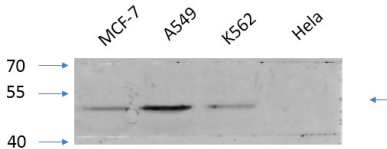
Western blot analysis of lysates from HeLa cells, using GSK3 alpha/beta (Phospho-Tyr279/216) Antibody. The lane on the right is blocked with the phospho peptide.



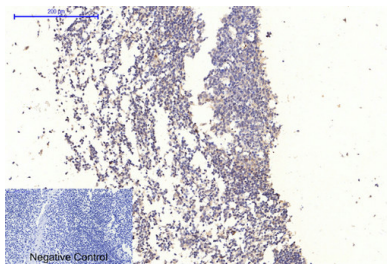
Immunofluorescence analysis of mouse-liver tissue. 1,GSK3 α/β (phospho Tyr279/216) Polyclonal Antibody (red) was diluted at 1:200 (4°C,overnight) . 2, Cy3 labeled Secondary antibody was diluted at 1:300 (room temperature, 50min) .3, Picture B: DAPI (blue) 10min. Picture A:Target. Picture B: DAPI. Picture C: merge of A+B



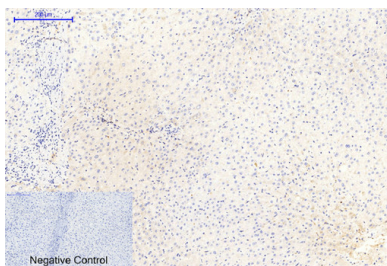
Immunofluorescence analysis of mouse-liver tissue. 1,GSK3 α/β (phospho Tyr279/216) Polyclonal Antibody (red) was diluted at 1:200 (4°C,overnight) . 2, Cy3 labeled Secondary antibody was diluted at 1:300 (room temperature, 50min) .3, Picture B: DAPI (blue) 10min. Picture A:Target. Picture B: DAPI. Picture C: merge of A+B



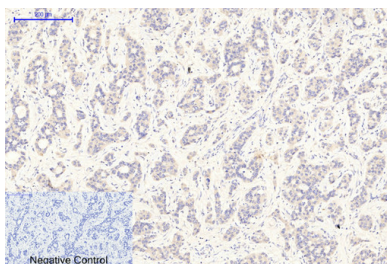
Western Blot analysis of various cells using GSK3 α/β (phospho Tyr279/216) Rabbit Polyclonal Antibody diluted at 1:1000 (4°C overnight) . Secondary antibody: Goat Anti-rabbit IgG IRDye 800 (diluted at 1:5000, 25°C, 1 hour) .



Immunohistochemical analysis of paraffin-embedded Human-Tonsil tissue. 1,GSK3 α/β (phospho Tyr279/216) Polyclonal Antibody was diluted at 1:200 (4°C,overnight) . 2, Sodium citrate pH 6.0 was used for antibody retrieval (>98°C,20min) . 3,Secondary antibody was diluted at 1:200 (room temperature, 30min) . Negative control was used by secondary antibody only.



Immunohistochemical analysis of paraffin-embedded Human-liver tissue. 1,GSK3 α/β (phospho Tyr279/216) Polyclonal Antibody was diluted at 1:200 (4°C,overnight) . 2, Sodium citrate pH 6.0 was used for antibody retrieval (>98°C,20min) . 3,Secondary antibody was diluted at 1:200 (room temperature, 30min) . Negative control was used by secondary antibody only.



Immunohistochemical analysis of paraffin-embedded Human-liver-cancer tissue. 1,GSK3 α/β (phospho Tyr279/216) Polyclonal Antibody was diluted at 1:200 (4°C,overnight) . 2, Sodium citrate pH 6.0 was used for antibody retrieval (>98°C,20min) . 3,Secondary antibody was diluted at 1:200 (room temperature, 30min) . Negative control was used by secondary antibody only.