

Product Name: GABAA R β 1 (phospho Ser434) Rabbit Polyclonal Antibody**Catalog #: APRab04721**

For research use only.

Summary

Description	Rabbit polyclonal Antibody
Host	Rabbit
Application	WB,IHC,ICC/IF,ELISA
Reactivity	Human,Mouse,Rat,Monkey
Conjugation	Unconjugated
Modification	Phosphorylated
Isotype	IgG
Clonality	Polyclonal
Form	Liquid
Concentration	1mg/ml
Storage	Aliquot and store at -20°C (valid for 12 months). Avoid freeze/thaw cycles.
Shipping	Ice bags
Buffer	Liquid in PBS containing 50% glycerol, 0.5% protective protein and 0.02% New type preservative N.
Purification	Affinity purification

Application

Dilution Ratio	WB 1:500-1:2000,IHC 1:100-1:300,ICC/IF 1:50-1:200,ELISA 1:20000-1:40000
Molecular Weight	55kDa

Antigen Information

Gene Name	GABRB1
Alternative Names	GABRB1; Gamma-aminobutyric acid receptor subunit beta-1; GABA(A) receptor subunit beta-1
Gene ID	2560.0
SwissProt ID	P18505
Immunogen	The antiserum was produced against synthesized peptide derived from human GABA-RB around the phosphorylation site of Ser434. AA range:401-450

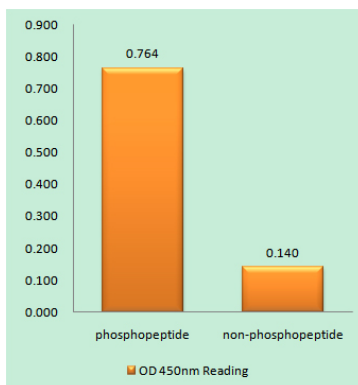
Background

The gamma-aminobutyric acid (GABA) A receptor is a multisubunit chloride channel that mediates the fastest inhibitory synaptic transmission in the central nervous system. This gene encodes GABA A receptor, beta 1 subunit. It is mapped to chromosome 4p12 in a cluster comprised of genes encoding alpha 4, alpha 2 and gamma 1 subunits of the GABA A receptor. Alteration of this gene is implicated in the pathogenetics of schizophrenia. [provided by RefSeq, Jul 2008],function:GABA, the major inhibitory neurotransmitter in the vertebrate brain, mediates neuronal inhibition by binding to the GABA/benzodiazepine receptor and opening an integral chloride channel.,online information:Forbidden fruit - Issue 56 of March 2005,similarity:Belongs to the ligand-gated ionic channel (TC 1.A.9) family.,subunit:Bounds UBQLN1 (By similarity). Generally pentameric. There are five types of GABA(A) receptor chains: alpha, beta, gamma, delta, and rho.,

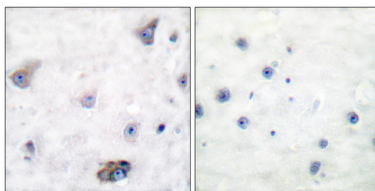
Research Area

Neuroactive ligand-receptor interaction;

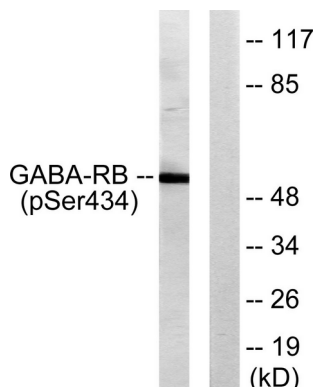
Image Data



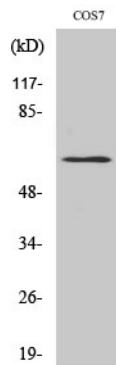
Enzyme-Linked Immunosorbent Assay (Phospho-ELISA) for Immunogen Phosphopeptide (Phospho-left) and Non-Phosphopeptide (Phospho-right) , using GABA-RB (Phospho-Ser434) Antibody



Immunohistochemistry analysis of paraffin-embedded human brain, using GABA-RB (Phospho-Ser434) Antibody. The picture on the right is blocked with the phospho peptide.



Western blot analysis of lysates from COS7 cells, using GABA-RB (Phospho-Ser434) Antibody. The lane on the right is blocked with the phospho peptide.



Western Blot analysis of various cells using Phospho-GABAA R β 1 (S434)
Polyclonal Antibody