

Product Name: Gab 1 (phospho Tyr627) Rabbit Polyclonal Antibody**Catalog #: APRab04715**

For research use only.

Summary

Description	Rabbit polyclonal Antibody
Host	Rabbit
Application	WB,ELISA
Reactivity	Human,Mouse,Monkey
Conjugation	Unconjugated
Modification	Phosphorylated
Isotype	IgG
Clonality	Polyclonal
Form	Liquid
Concentration	1mg/ml
Storage	Aliquot and store at -20°C (valid for 12 months). Avoid freeze/thaw cycles.
Shipping	Ice bags
Buffer	Liquid in PBS containing 50% glycerol, 0.5% protective protein and 0.02% New type preservative N.
Purification	Affinity purification

Application

Dilution Ratio	WB 1:500-1:2000,ELISA 1:5000-1:20000
Molecular Weight	110kDa

Antigen Information

Gene Name	GAB1
Alternative Names	GAB1; GRB2-associated-binding protein 1; GRB2-associated binder 1; Growth factor receptor bound protein 2-associated protein 1
Gene ID	2549.0
SwissProt ID	Q13480
Immunogen	The antiserum was produced against synthesized peptide derived from human GAB1 around the phosphorylation site of Tyr627 AA range:611-643

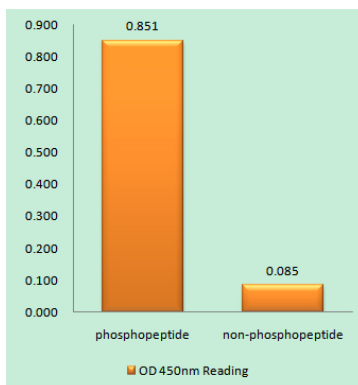
Background

GRB2 associated binding protein 1(GAB1) Homo sapiens The protein encoded by this gene is a member of the IRS1-like multisubstrate docking protein family. It is an important mediator of branching tubulogenesis and plays a central role in cellular growth response, transformation and apoptosis. Two transcript variants encoding different isoforms have been found for this gene. [provided by RefSeq, Aug 2008],function:Probably involved in EGF and insulin receptor signaling.,PTM:Phosphorylated on tyrosine residue(s) by the epidermal growth factor receptor (EGFR) and the insulin receptor (INSR). Tyrosine phosphorylation of GAB1 mediates interaction with several proteins that contain SH2 domains.,similarity:Belongs to the GAB family.,similarity:Contains 1 PH domain.,subunit:Interacts with GRB2 and with other SH2-containing proteins. Interacts with phosphorylated LAT2.,

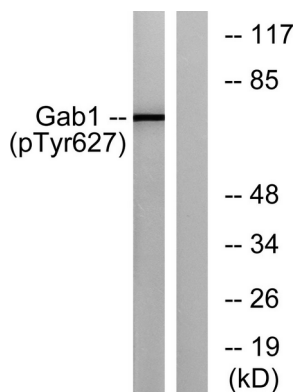
Research Area

ErbB_HER;Neurotrophin;Renal cell carcinoma;

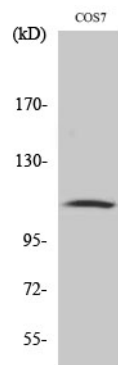
Image Data



Enzyme-Linked Immunosorbent Assay (Phospho-ELISA) for Immunogen Phosphopeptide (Phospho-left) and Non-Phosphopeptide (Phospho-right) , using GAB1 (Phospho-Tyr627) Antibody



Western blot analysis of GAB1 (Phospho-Tyr627) Antibody. The lane on the right is blocked with the GAB1 (Phospho-Tyr627) peptide.



Western Blot analysis of various cells using Phospho-Gab 1 (Y627) Polyclonal Antibody