
Product Name: Fer (phospho Tyr402) Rabbit Polyclonal Antibody**Catalog #: APRab04668**

For research use only.

Summary

Description	Rabbit polyclonal Antibody
Host	Rabbit
Application	WB,IHC,ICC/IF,ELISA
Reactivity	Human,Mouse
Conjugation	Unconjugated
Modification	Phosphorylated
Isotype	IgG
Clonality	Polyclonal
Form	Liquid
Concentration	1mg/ml
Storage	Aliquot and store at -20°C (valid for 12 months). Avoid freeze/thaw cycles.
Shipping	Ice bags
Buffer	Liquid in PBS containing 50% glycerol, 0.5% protective protein and 0.02% New type preservative N.
Purification	Affinity purification

Application

Dilution Ratio	WB 1:500-1:2000,IHC 1:100-1:300,ICC/IF 1:50-1:200,ELISA 1:10000-1:20000
Molecular Weight	85kDa

Antigen Information

Gene Name	FER FER; TYK3; Tyrosine-protein kinase Fer; Feline encephalitis virus-related kinase FER; Fujinami
Alternative Names	poultry sarcoma/Feline sarcoma-related protein Fer; Proto-oncogene c-Fer; Tyrosine kinase 3; p94-Fer
Gene ID	2241.0
SwissProt ID	P16591
Immunogen	The antiserum was produced against synthesized peptide derived from human FER around the phosphorylation site of Tyr402. AA range:371-420

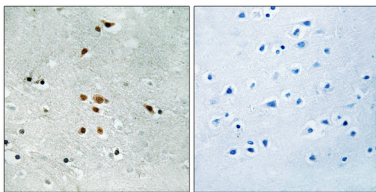
Background

The protein encoded by this gene is a member of the FPS/FES family of non-transmembrane receptor tyrosine kinases. It regulates cell-cell adhesion and mediates signaling from the cell surface to the cytoskeleton via growth factor receptors. Alternative splicing results in multiple transcript variants. A related pseudogene has been identified on chromosome X. [provided by RefSeq, Apr 2015],catalytic activity:ATP + a [protein]-L-tyrosine = ADP + a [protein]-L-tyrosine phosphate.,function:Tyrosine kinase of the non-receptor type. Probably performs an important function, perhaps in regulatory processes such as cell cycle control.,similarity:Belongs to the protein kinase superfamily. Tyr protein kinase family. Fes/fps subfamily.,similarity:Contains 1 FCH domain.,similarity:Contains 1 protein kinase domain.,similarity:Contains 1 SH2 domain.,subcellular location:Associated with the chromatin.,tissue specificity:Expressed in a variety of lymphoid cell lines.,

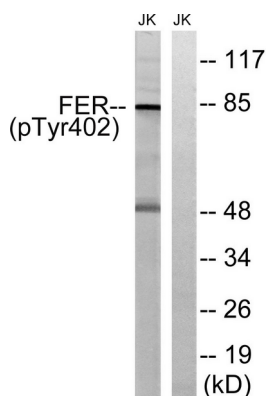
Research Area

Adherens_Junction;

Image Data



Immunohistochemistry analysis of paraffin-embedded human brain, using FER (Phospho-Tyr402) Antibody. The picture on the right is blocked with the phospho peptide.



Western blot analysis of lysates from Jurkat cells treated with starved 24h, using FER (Phospho-Tyr402) Antibody. The lane on the right is blocked with the phospho peptide.