

**Product Name: Ephrin-B1/2/3 (phospho Tyr324) Rabbit Polyclonal Antibody****Catalog #: APRab04620**

For research use only.

**Summary**

<b>Description</b>	Rabbit polyclonal Antibody
<b>Host</b>	Rabbit
<b>Application</b>	WB,IHC,ICC/IF,ELISA
<b>Reactivity</b>	Human,Mouse,Rat
<b>Conjugation</b>	Unconjugated
<b>Modification</b>	Phosphorylated
<b>Isotype</b>	IgG
<b>Clonality</b>	Polyclonal
<b>Form</b>	Liquid
<b>Concentration</b>	1mg/ml
<b>Storage</b>	Aliquot and store at -20°C (valid for 12 months). Avoid freeze/thaw cycles.
<b>Shipping</b>	Ice bags
<b>Buffer</b>	Liquid in PBS containing 50% glycerol, 0.5% protective protein and 0.02% New type preservative N.
<b>Purification</b>	Affinity purification

**Application**

<b>Dilution Ratio</b>	WB 1:500-1:2000,IHC 1:100-1:300,ICC/IF 1:50-1:200,ELISA 1:10000-1:20000
<b>Molecular Weight</b>	46kDa

**Antigen Information**

<b>Gene Name</b>	EFNB1/EFNB2/EFNB3 EFNB1; EFL3; EPLG2; LERK2; Ephrin-B1; EFL-3; ELK ligand; ELK-L; EPH-related receptor
<b>Alternative Names</b>	tyrosine kinase ligand 2; LERK-2; EFNB2; EPLG5; HTKL; LERK5; Ephrin-B2; EPH-related receptor tyrosine kinase ligand 5; LERK-5; HTK ligand; HTK-L; EFNB3; EP
<b>Gene ID</b>	1947/1948/1949
<b>SwissProt ID</b>	P98172/P52799/Q15768
<b>Immunogen</b>	The antiserum was produced against synthesized peptide derived from human Ephrin B1/B2/B3 around the phosphorylation site of Tyr324. AA range:290-339

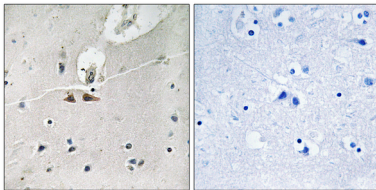
## Background

The protein encoded by this gene is a type I membrane protein and a ligand of Eph-related receptor tyrosine kinases. It may play a role in cell adhesion and function in the development or maintenance of the nervous system. [provided by RefSeq, Jul 2008],disease:Defects in EFNB1 are a cause of craniofrontonasal syndrome (CFNS) [MIM:304110]; also known as craniofrontonasal dysplasia (CFND). CFNS is an X-linked inherited syndrome characterized by hypertelorism, coronal synostosis with brachycephaly, downslanting palpebral fissures, clefting of the nasal tip, joint anomalies, longitudinally grooved fingernails and other digital anomalies.,function:Binds to the receptor tyrosine kinases EPHB1 and EPHA1. Binds to, and induce the collapse of, commissural axons/growth cones in vitro. May play a role in constraining the orientation of longitudinally projecting axons.,induction:By TNF-alpha.,PTM:Inducible phosphorylation of tyrosine residues in the cytoplasmic domain.,similarity:Belongs to the ephrin family.,subunit:Interacts with GRIP1 and GRIP2.,tissue specificity:Heart, placenta, lung, liver, skeletal muscle, kidney, pancreas.,

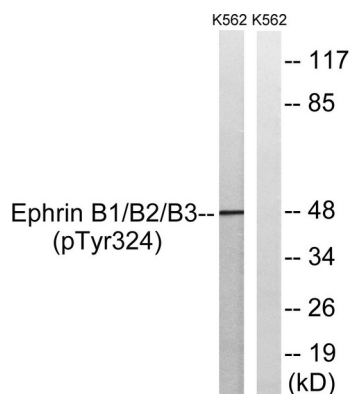
## Research Area

Axon guidance;

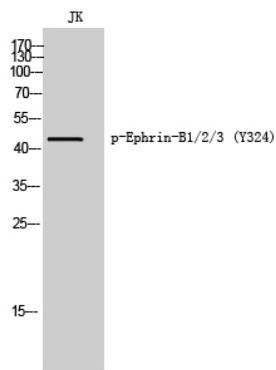
## Image Data



Immunohistochemistry analysis of paraffin-embedded human brain, using Ephrin B1/B2/B3 (Phospho-Tyr324) Antibody. The picture on the right is blocked with the phospho peptide.



Western blot analysis of lysates from K562 cells treated with serum 20% 15', using Ephrin B1/B2/B3 (Phospho-Tyr324) Antibody. The lane on the right is blocked with the phospho peptide.



Western Blot analysis of JK cells using Phospho-Ephrin-B1/2/3 (Y324) Polyclonal Antibody