
Product Name: E2A (phospho Thr355) Rabbit Polyclonal Antibody**Catalog #: APRab04569**

For research use only.

Summary

Description	Rabbit polyclonal Antibody
Host	Rabbit
Application	IHC, ICC/IF, ELISA
Reactivity	Human, Mouse, Rat
Conjugation	Unconjugated
Modification	Phosphorylated
Isotype	IgG
Clonality	Polyclonal
Form	Liquid
Concentration	1mg/ml
Storage	Aliquot and store at -20°C (valid for 12 months). Avoid freeze/thaw cycles.
Shipping	Ice bags
Buffer	Liquid in PBS containing 50% glycerol, 0.5% protective protein and 0.02% New type preservative N.
Purification	Affinity purification

Application**Dilution Ratio** IHC 1:100-1:300, ICC/IF 1:50-1:200, ELISA 1:5000-1:10000**Molecular Weight****Antigen Information**

Gene Name	TCF3 TCF3; BHLHB21; E2A; ITF1; Transcription factor E2-alpha; Class B basic helix-loop-helix
Alternative Names	protein 21; bHLHb21; Immunoglobulin enhancer-binding factor E12/E47; Immunoglobulin transcription factor 1; Kappa-E2-binding factor; Transcription facto
Gene ID	6929.0
SwissProt ID	P15923
Immunogen	The antiserum was produced against synthesized peptide derived from human E2A around the phosphorylation site of Thr355. AA range:321-370

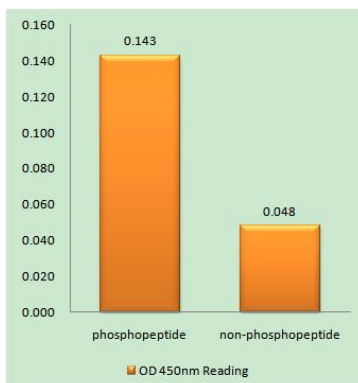
Background

This gene encodes a member of the E protein (class I) family of helix-loop-helix transcription factors. E proteins activate transcription by binding to regulatory E-box sequences on target genes as heterodimers or homodimers, and are inhibited by heterodimerization with inhibitor of DNA-binding (class IV) helix-loop-helix proteins. E proteins play a critical role in lymphopoiesis, and the encoded protein is required for B and T lymphocyte development. Deletion of this gene or diminished activity of the encoded protein may play a role in lymphoid malignancies. This gene is also involved in several chromosomal translocations that are associated with lymphoid malignancies including pre-B-cell acute lymphoblastic leukemia (t(1;19), with PBX1), childhood leukemia (t(19;19), with TFPT) and acute leukemia (t(12;19), with ZNF384). Alternatively spliced transcript variants encoding multiple isoforms have been identified. Chromosomal aberrations involving TCF3 are cause of forms of pre-B-cell acute lymphoblastic leukemia (B-ALL). Translocation t(1;19)(q23;p13.3) with PBX1; Translocation t(17;19)(q22;p13.3) with HLF. Inversion inv(19)(p13;q13) with TFPT. function: Heterodimers between TCF3 and tissue-specific basic helix-loop-helix (bHLH) proteins play major roles in determining tissue-specific cell fate during embryogenesis, like muscle or early B-cell differentiation. Dimers bind DNA on E-box motifs: 5'-CANNTG-3'. Binds to the kappa-E2 site in the kappa immunoglobulin gene enhancer. PTM: Phosphorylated following NGF stimulation. similarity: Contains 1 basic helix-loop-helix (bHLH) domain. subunit: Efficient DNA binding requires dimerization with another bHLH protein. Forms a heterodimer with ASH1 and TWIST2. Isoform E12 interacts with GRIPE and FIGLA (By similarity). Interacts with PTF1A and TGFB11. Component of a nuclear TAL-1 complex composed at least of CBFA2T3, LDB1, TAL1 and TCF3 (By similarity). Interacts with UBE2L.

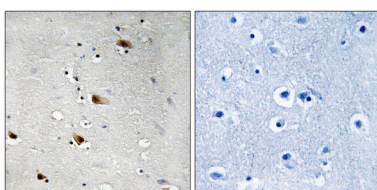
Research Area

Stem cell pathway; WNT; WNT-T CELL; β -Catenin; Protein_Acetylation

Image Data



Enzyme-Linked Immunosorbent Assay (Phospho-ELISA) for Immunogen Phosphopeptide (Phospho-left) and Non-Phosphopeptide (Phospho-right) , using E2A (Phospho-Thr355) Antibody



Immunohistochemistry analysis of paraffin-embedded human brain, using E2A (Phospho-Thr355) Antibody. The picture on the right is blocked with the phospho peptide.