
Product Name: Dok-1 (phospho Tyr362) Rabbit Polyclonal Antibody**Catalog #: APRab04556**

For research use only.

Summary

Description	Rabbit polyclonal Antibody
Host	Rabbit
Application	WB,ICC/IF,ELISA
Reactivity	Human,Mouse,Rat
Conjugation	Unconjugated
Modification	Phosphorylated
Isotype	IgG
Clonality	Polyclonal
Form	Liquid
Concentration	1mg/ml
Storage	Aliquot and store at -20°C (valid for 12 months). Avoid freeze/thaw cycles.
Shipping	Ice bags
Buffer	Liquid in PBS containing 50% glycerol, 0.5% protective protein and 0.02% New type preservative N.
Purification	Affinity purification

Application

Dilution Ratio	WB 1:500-1:2000,ICC/IF 1:200-1:1000,ELISA 1:5000-1:20000
Molecular Weight	55kDa

Antigen Information

Gene Name	DOK1
Alternative Names	DOK1; Docking protein 1; Downstream of tyrosine kinase 1; p62(dok); pp62
Gene ID	1796.0
SwissProt ID	Q99704
Immunogen	The antiserum was produced against synthesized peptide derived from human p62 Dok around the phosphorylation site of Tyr362. AA range:329-378

Background

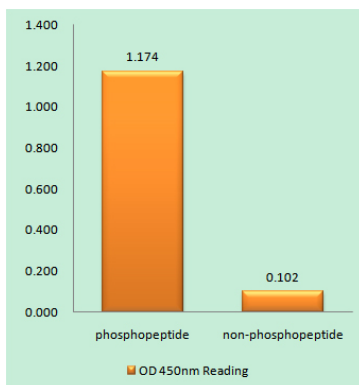
docking protein 1(DOK1) Homo sapiens The protein encoded by this gene is part of a signal transduction pathway

downstream of receptor tyrosine kinases. The encoded protein is a scaffold protein that helps form a platform for the assembly of multiprotein signaling complexes. Several transcript variants encoding different isoforms have been found for this gene. [provided by RefSeq, Jan 2016],domain:The PTB domain mediates receptor interaction.,function:DOK proteins are enzymatically inert adaptor or scaffolding proteins. They provide a docking platform for the assembly of multimolecular signaling complexes. DOK1 appears to be a negative regulator of the insulin signaling pathway. Modulates integrin activation by competing with talin for the same binding site on ITGB3.,PTM:Constitutively tyrosine-phosphorylated.,PTM:Phosphorylated on tyrosine residues by the insulin receptor kinase. Results in the negative regulation of the insulin signaling pathway.,similarity:Belongs to the DOK family. Type A subfamily.,similarity:Contains 1 IRS-type PTB domain.,similarity:Contains 1 PH domain.,subunit:Interacts with ABL (By similarity). Interacts with RasGAP and INPP5D/SHIP1. Interacts directly with phosphorylated ITGB3.,tissue specificity:Expressed in pancreas, heart, leukocyte and spleen. Expressed in both resting and activated peripheral blood T-cells,

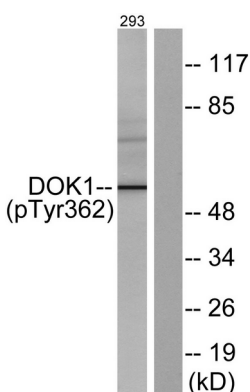
Research Area

B_Cell_Antigen

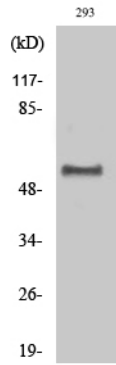
Image Data



Enzyme-Linked Immunosorbent Assay (Phospho-ELISA) for Immunogen Phosphopeptide (Phospho-left) and Non-Phosphopeptide (Phospho-right) , using p62 Dok (Phospho-Tyr362) Antibody



Western blot analysis of lysates from 293 cells, using p62 Dok (Phospho-Tyr362) Antibody. The lane on the right is blocked with the phospho peptide.



Western Blot analysis of various cells using Phospho-Dok-1 (Y362) Polyclonal Antibody