

Product Name: Cyclin D2 (phospho Thr280) Rabbit Polyclonal Antibody**Catalog #: APRab04522**

For research use only.

Summary

Description	Rabbit polyclonal Antibody
Host	Rabbit
Application	WB,IHC,ICC/IF,ELISA
Reactivity	Human,Mouse,Rat
Conjugation	Unconjugated
Modification	Phosphorylated
Isotype	IgG
Clonality	Polyclonal
Form	Liquid
Concentration	1mg/ml
Storage	Aliquot and store at -20°C (valid for 12 months). Avoid freeze/thaw cycles.
Shipping	Ice bags
Buffer	Liquid in PBS containing 50% glycerol, 0.5% protective protein and 0.02% New type preservative N.
Purification	Affinity purification

Application

Dilution Ratio	WB 1:500-1:2000,IHC 1:100-1:300,ICC/IF 1:50-1:200,ELISA 1:5000-1:20000
Molecular Weight	40kDa

Antigen Information

Gene Name	CCND2
Alternative Names	CCND2; G1/S-specific cyclin-D2
Gene ID	894.0
SwissProt ID	P30279
Immunogen	The antiserum was produced against synthesized peptide derived from human Cyclin D2 around the phosphorylation site of Thr280. AA range:240-289

Background

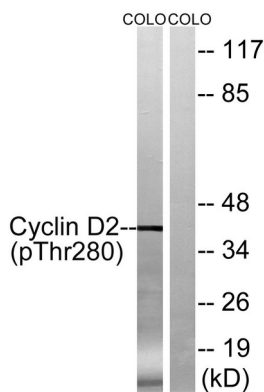
The protein encoded by this gene belongs to the highly conserved cyclin family, whose members are characterized by a

dramatic periodicity in protein abundance through the cell cycle. Cyclins function as regulators of CDK kinases. Different cyclins exhibit distinct expression and degradation patterns which contribute to the temporal coordination of each mitotic event. This cyclin forms a complex with CDK4 or CDK6 and functions as a regulatory subunit of the complex, whose activity is required for cell cycle G1/S transition. This protein has been shown to interact with and be involved in the phosphorylation of tumor suppressor protein Rb. Knockout studies of the homologous gene in mouse suggest the essential roles of this gene in ovarian granulosa and germ cell proliferation. High level expression of this gene was observed in ovarian and testicular tumors. Mutations in this gene are associated with megaloencephaly. **function:**Essential for the control of the cell cycle at the G1/S (start) transition.,**similarity:**Belongs to the cyclin family.,**similarity:**Belongs to the cyclin family. Cyclin D subfamily.,**subunit:**Interacts with the CDK4 and CDK6 protein kinases to form a serine/threonine kinase holoenzyme complex. The cyclin subunit imparts substrate specificity to the complex.,

Research Area

Cell_Cycle_G1S;Cell_Cycle_G2M_DNA;p53;WNT;WNT-T CELLFocal adhesion;Jak_STAT;

Image Data



Western blot analysis of lysates from COLO205 cells treated with EGF 200ng/ml 30 ', using Cyclin D2 (Phospho-Thr280) Antibody. The lane on the right is blocked with the phospho peptide.