
Product Name: c-Src (phospho Tyr419) Rabbit Polyclonal Antibody**Catalog #: APRab04512**

For research use only.

Summary

Description	Rabbit polyclonal Antibody
Host	Rabbit
Application	WB,IHC,ICC/IF,ELISA
Reactivity	Human,Mouse,Rat
Conjugation	Unconjugated
Modification	Phosphorylated
Isotype	IgG
Clonality	Polyclonal
Form	Liquid
Concentration	1mg/ml
Storage	Aliquot and store at -20°C (valid for 12 months). Avoid freeze/thaw cycles.
Shipping	Ice bags
Buffer	Liquid in PBS containing 50% glycerol, 0.5% protective protein and 0.02% New type preservative N.
Purification	Affinity purification

Application

Dilution Ratio	WB 1:500-1:2000,IHC 1:100-1:300,ICC/IF 1:50-1:200,ELISA 1:10000-1:20000
Molecular Weight	60kDa

Antigen Information

Gene Name	SRC
Alternative Names	SRC; SRC1; Proto-oncogene tyrosine-protein kinase Src; Proto-oncogene c-Src; pp60c-src; p60-Src
Gene ID	6714.0
SwissProt ID	P12931
Immunogen	The antiserum was produced against synthesized peptide derived from human Src around the phosphorylation site of Tyr418. AA range:386-435

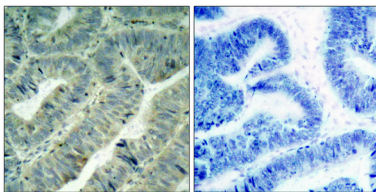
Background

This gene is highly similar to the v-src gene of Rous sarcoma virus. This proto-oncogene may play a role in the regulation of embryonic development and cell growth. The protein encoded by this gene is a tyrosine-protein kinase whose activity can be inhibited by phosphorylation by c-SRC kinase. Mutations in this gene could be involved in the malignant progression of colon cancer. Two transcript variants encoding the same protein have been found for this gene. [provided by RefSeq, Jul 2008],catalytic activity:ATP + a [protein]-L-tyrosine = ADP + a [protein]-L-tyrosine phosphate.,PTM:Phosphorylated on Tyr-530 by c-Src kinase (CSK). The phosphorylated form is termed pp60c-src. The phosphorylated tail interacts with the SH2 domain thereby repressing kinase activity.,similarity:Belongs to the protein kinase superfamily. Tyr protein kinase family. SRC subfamily.,similarity:Contains 1 protein kinase domain.,similarity:Contains 1 SH2 domain.,similarity:Contains 1 SH3 domain.,subunit:Interacts with DDEF1/ASAP1; via the SH3 domain. Interacts with CCPG1 (By similarity). Interacts with CDCP1, PELP1, TGFBI1 and TOM1L2. Interacts with the cytoplasmic domain of MUC1, phosphorylates it and increases binding of MUC1 with beta-catenin. Interacts with RALGPS1; via the SH3 domain. Interacts with HEV ORF3 protein; via the SH3 domain.,

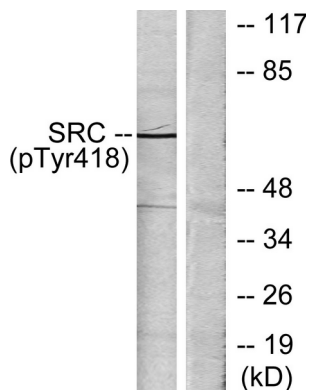
Research Area

ErbB_HER;Endocytosis;VEGF;Focal adhesion;Adherens_Junction;Adherens_Junction;Gap junction;GnRH;Epithelial cell signaling in Helicobacter pylori infection;

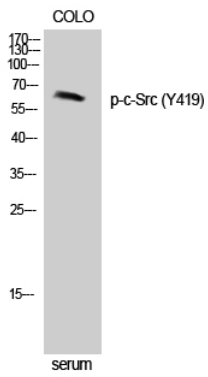
Image Data



Immunohistochemistry analysis of paraffin-embedded human colon carcinoma, using Src (Phospho-Tyr418) Antibody. The picture on the right is blocked with the phospho peptide.



Western blot analysis of lysates from COLO205 cells treated with serum 15% 10⁻⁵, using Src (Phospho-Tyr418) Antibody. The lane on the right is blocked with the phospho peptide.



Western Blot analysis of Jurkat cells using Phospho-c-Src (Y419) Polyclonal Antibody diluted at 1: 500