

---

**Product Name: CPI-17 (phospho Thr38) Rabbit Polyclonal Antibody****Catalog #: APRab04492**

For research use only.

**Summary**

<b>Description</b>	Rabbit polyclonal Antibody
<b>Host</b>	Rabbit
<b>Application</b>	WB,IHC,ICC/IF,ELISA
<b>Reactivity</b>	Human,Mouse,Rat
<b>Conjugation</b>	Unconjugated
<b>Modification</b>	Phosphorylated
<b>Isotype</b>	IgG
<b>Clonality</b>	Polyclonal
<b>Form</b>	Liquid
<b>Concentration</b>	1mg/ml
<b>Storage</b>	Aliquot and store at -20°C (valid for 12 months). Avoid freeze/thaw cycles.
<b>Shipping</b>	Ice bags
<b>Buffer</b>	Liquid in PBS containing 50% glycerol, 0.5% protective protein and 0.02% New type preservative N.
<b>Purification</b>	Affinity purification

**Application**

<b>Dilution Ratio</b>	WB 1:500-1:2000,IHC 1:100-1:300,ICC/IF 1:50-1:200,ELISA 1:10000-1:20000
<b>Molecular Weight</b>	22kDa

**Antigen Information**

<b>Gene Name</b>	PPP1R14A PPP1R14A; CPI17; PPP1INL; Protein phosphatase 1 regulatory subunit 14A; 17 kDa PKC-potentiated inhibitory protein of PP1; Protein kinase C-potentiated inhibitor protein of 17 kDa; CPI-17
<b>Alternative Names</b>	
<b>Gene ID</b>	94274.0
<b>SwissProt ID</b>	Q96A00
<b>Immunogen</b>	The antiserum was produced against synthesized peptide derived from human CPI17 alpha around the phosphorylation site of Thr38. AA range:5-54

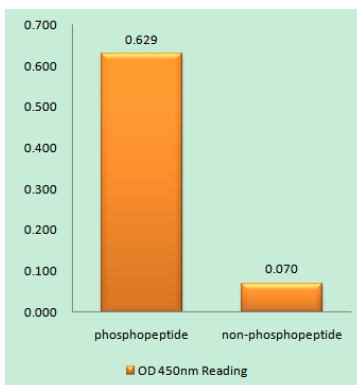
## Background

The protein encoded by this gene belongs to the protein phosphatase 1 (PP1) inhibitor family. This protein is an inhibitor of smooth muscle myosin phosphatase, and has higher inhibitory activity when phosphorylated. Inhibition of myosin phosphatase leads to increased myosin phosphorylation and enhanced smooth muscle contraction. Alternatively spliced transcript variants encoding different isoforms have been noted for this gene. [provided by RefSeq, Sep 2011],function:Inhibitor of PPP1CA. Has over 1000-fold higher inhibitory activity when phosphorylated, creating a molecular switch for regulating the phosphorylation status of PPP1CA substrates and smooth muscle contraction.,similarity:Belongs to the PP1 inhibitor family.,tissue specificity:Isoform 1 is detected in aorta and testis. Isoform 2 is detected in aorta.,

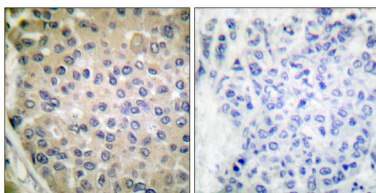
## Research Area

Vascular smooth muscle contraction;

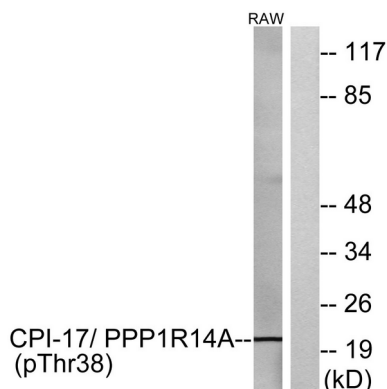
## Image Data



Enzyme-Linked Immunosorbent Assay ( Phospho-ELISA ) for Immunogen Phosphopeptide (Phospho-left) and Non-Phosphopeptide (Phospho-right) , using CPI17 alpha (Phospho-Thr38) Antibody



Immunohistochemistry analysis of paraffin-embedded human breast carcinoma, using CPI17 alpha (Phospho-Thr38) Antibody. The picture on the right is blocked with the phospho peptide.



Western blot analysis of lysates from RAW264.7 cells, using CPI17 alpha (Phospho-Thr38) Antibody. The lane on the right is blocked with the phospho peptide.