
Product Name: CNOT2 (phospho Ser101) Rabbit Polyclonal Antibody**Catalog #: APRab04482**

For research use only.

Summary

Description	Rabbit polyclonal Antibody
Host	Rabbit
Application	IHC,ICC/IF,ELISA
Reactivity	Human,Mouse,Rat
Conjugation	Unconjugated
Modification	Phosphorylated
Isotype	IgG
Clonality	Polyclonal
Form	Liquid
Concentration	1mg/ml
Storage	Aliquot and store at -20°C (valid for 12 months). Avoid freeze/thaw cycles.
Shipping	Ice bags
Buffer	Liquid in PBS containing 50% glycerol, 0.5% protective protein and 0.02% New type preservative N.
Purification	Affinity purification

Application

Dilution Ratio IHC 1:100-1:300,ICC/IF 1:50-1:200,ELISA 1:5000-1:20000

Molecular Weight

Antigen Information

Gene Name	CNOT2
Alternative Names	CNOT2; CDC36; NOT2; HSPC131; MSTP046; CCR4-NOT transcription complex subunit 2; CCR4-associated factor 2
Gene ID	4848.0
SwissProt ID	Q9NZN8
Immunogen	The antiserum was produced against synthesized peptide derived from human CNOT2 around the phosphorylation site of Ser101. AA range:67-116

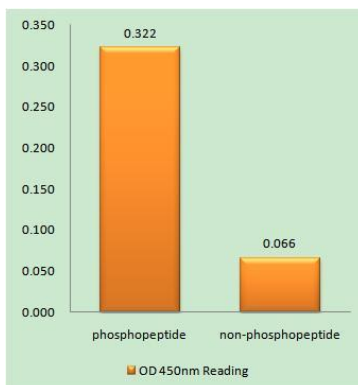
Background

CCR4-NOT transcription complex subunit 2(CNOT2) Homo sapiens This gene encodes a subunit of the multi-component CCR4-NOT complex. The CCR4-NOT complex regulates mRNA synthesis and degradation and is also thought to be involved in mRNA splicing, transport and localization. The encoded protein interacts with histone deacetylases and functions as a repressor of polymerase II transcription. Alternatively spliced transcript variants have been observed for this gene. [provided by RefSeq, Dec 2010],function:The CCR4-NOT complex functions as general transcription regulation complex.,PTM:Phosphorylated upon DNA damage, probably by ATM or ATR.,similarity:Belongs to the CNOT2/3/5 family.,subunit:Subunit of the CCR4-NOT core complex that contains CHAF1A, CHAF1B, CNOT1, CNOT2, CNOT3, CNOT4, CNOT6 and CNOT8.,tissue specificity:Ubiquitous. Highly expressed in brain, heart, thymus, spleen, kidney, liver, small intestine, placenta, lung and peripheral blood leukocytes.,

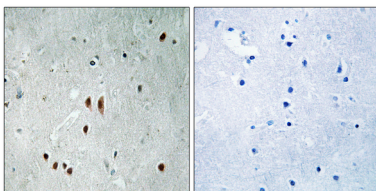
Research Area

RNA degradation;

Image Data



Enzyme-Linked Immunosorbent Assay (Phospho-ELISA) for Immunogen Phosphopeptide (Phospho-left) and Non-Phosphopeptide (Phospho-right) , using CNOT2 (Phospho-Ser101) Antibody



Immunohistochemistry analysis of paraffin-embedded human brain, using CNOT2 (Phospho-Ser101) Antibody. The picture on the right is blocked with the phospho peptide.