
Product Name: Cdk5 (phospho Tyr15) Rabbit Polyclonal Antibody**Catalog #: APRab04435**

For research use only.

Summary

Description	Rabbit polyclonal Antibody
Host	Rabbit
Application	WB,IHC,ICC/IF,ELISA
Reactivity	Human,Mouse,Rat,Monkey
Conjugation	Unconjugated
Modification	Phosphorylated
Isotype	IgG
Clonality	Polyclonal
Form	Liquid
Concentration	1mg/ml
Storage	Aliquot and store at -20°C (valid for 12 months). Avoid freeze/thaw cycles.
Shipping	Ice bags
Buffer	Liquid in PBS containing 50% glycerol, 0.5% protective protein and 0.02% New type preservative N.
Purification	Affinity purification

Application

Dilution Ratio	WB 1:500-1:2000,IHC 1:100-1:300,ICC/IF 1:50-1:200,ELISA 1:5000-1:10000
Molecular Weight	33kDa

Antigen Information

Gene Name	CDK5
Alternative Names	CDK5; CDKN5; Cyclin-dependent kinase 5; Cell division protein kinase 5; Serine/threonine-protein kinase PSSALRE; Tau protein kinase II catalytic subunit; TPKII catalytic subunit
Gene ID	1020.0
SwissProt ID	Q00535
Immunogen	The antiserum was produced against synthesized peptide derived from human CDK5 around the phosphorylation site of Tyr15. AA range:1-50

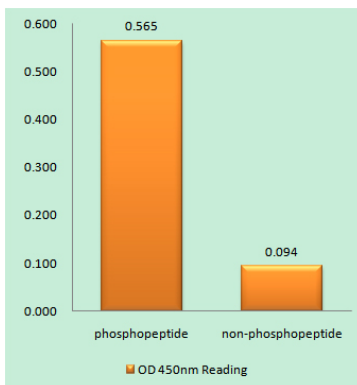
Background

cyclin dependent kinase 5(CDK5) Homo sapiens This gene encodes a proline-directed serine/threonine kinase that is a member of the cyclin-dependent kinase family of proteins. Unlike other members of the family, the protein encoded by this gene does not directly control cell cycle regulation. Instead the protein, which is predominantly expressed at high levels in mammalian postmitotic central nervous system neurons, functions in diverse processes such as synaptic plasticity and neuronal migration through phosphorylation of proteins required for cytoskeletal organization, endocytosis and exocytosis, and apoptosis. In humans, an allelic variant of the gene that results in undetectable levels of the protein has been associated with lethal autosomal recessive lissencephaly-7. Alternative splicing results in multiple transcript variants. [provided by RefSeq, May 2015],catalytic activity:ATP + a protein = ADP + a phosphoprotein.,function:Probably involved in the control of the cell cycle. Interacts with D1 and D3-type G1 cyclins. Can phosphorylate histone H1, tau, MAP2 and NF-H and NF-M. Also interacts with p35 which activates the kinase.,similarity:Belongs to the protein kinase superfamily. CMGC Ser/Thr protein kinase family. CDC2/CDKX subfamily.,similarity:Contains 1 protein kinase domain.,subcellular location:In axonal growth cone with extension to the peripheral lamellipodia.,subunit:Heterodimer of a catalytic subunit and a regulatory subunit (p35). Found in a trimolecular complex with CABLES1 and ABL1. Interacts with CABLES1 (By similarity). Interacts with AATK,

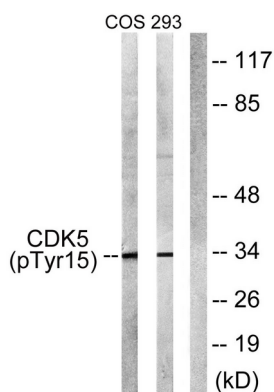
Research Area

Axon guidance;Alzheimer's disease;

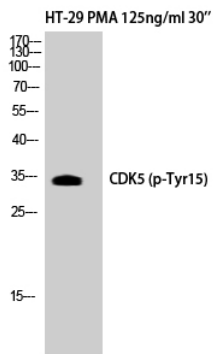
Image Data



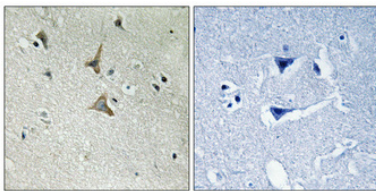
Enzyme-Linked Immunosorbent Assay (Phospho-ELISA) for Immunogen Phosphopeptide (Phospho-left) and Non-Phosphopeptide (Phospho-right) , using CDK5 (Phospho-Tyr15) Antibody



Western blot analysis of lysates from COS7 cells treated with EGF 200ng/ml 30' and 293 cells treated with H₂O₂ 100u, 15mins, using CDK5 (Phospho-Tyr15) Antibody. The lane on the right is blocked with the phospho peptide.



Western Blot analysis of HT29+PMA cells using Phospho-Cdk5 (Y15) Polyclonal Antibody



Immunohistochemical analysis of paraffin-embedded Human brain. Antibody was diluted at 1:100 (4°, overnight) . High-pressure and temperature Tris-EDTA, pH8.0 was used for antigen retrieval. Negative control (right) obtained from antibody was pre-absorbed by immunogen peptide.