

---

**Product Name: Cdc6 (phospho Ser54) Rabbit Polyclonal Antibody****Catalog #: APRab04427**

For research use only.

**Summary**

<b>Description</b>	Rabbit polyclonal Antibody
<b>Host</b>	Rabbit
<b>Application</b>	WB,IHC,ICC/IF,ELISA
<b>Reactivity</b>	Human,Mouse,Monkey
<b>Conjugation</b>	Unconjugated
<b>Modification</b>	Phosphorylated
<b>Isotype</b>	IgG
<b>Clonality</b>	Polyclonal
<b>Form</b>	Liquid
<b>Concentration</b>	1mg/ml
<b>Storage</b>	Aliquot and store at -20°C (valid for 12 months). Avoid freeze/thaw cycles.
<b>Shipping</b>	Ice bags
<b>Buffer</b>	Liquid in PBS containing 50% glycerol, 0.5% protective protein and 0.02% New type preservative N.
<b>Purification</b>	Affinity purification

**Application**

<b>Dilution Ratio</b>	WB 1:500-1:2000,IHC 1:100-1:300,ICC/IF 1:50-1:200,ELISA 1:5000-1:10000
<b>Molecular Weight</b>	62kDa

**Antigen Information**

<b>Gene Name</b>	CDC6
<b>Alternative Names</b>	CDC6; CDC18L; Cell division control protein 6 homolog; CDC6-related protein; Cdc18-related protein; HsCdc18; p62(cdc6); HsCDC6
<b>Gene ID</b>	990.0
<b>SwissProt ID</b>	Q99741
<b>Immunogen</b>	The antiserum was produced against synthesized peptide derived from human CDC6 around the phosphorylation site of Ser54. AA range:20-69

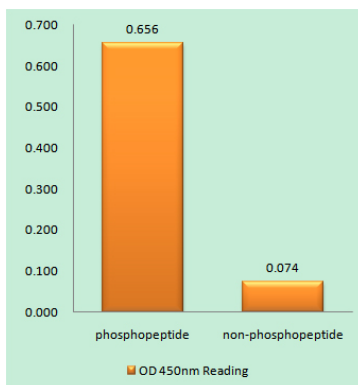
**Background**

The protein encoded by this gene is highly similar to *Saccharomyces cerevisiae* Cdc6, a protein essential for the initiation of DNA replication. This protein functions as a regulator at the early steps of DNA replication. It localizes in cell nucleus during cell cycle G1, but translocates to the cytoplasm at the start of S phase. The subcellular translocation of this protein during cell cycle is regulated through its phosphorylation by Cdks. Transcription of this protein was reported to be regulated in response to mitogenic signals through transcriptional control mechanism involving E2F proteins. [provided by RefSeq, Jul 2008],function:Involved in the initiation of DNA replication. Also participates in checkpoint controls that ensure DNA replication is completed before mitosis is initiated.,similarity:Belongs to the CDC6/cdc18 family.,subcellular location:The protein is nuclear in G1 and cytoplasmic in S-phase cells.,subunit:Interacts with PCNA, ORC1L, cyclin-CDK and HUWE1.,

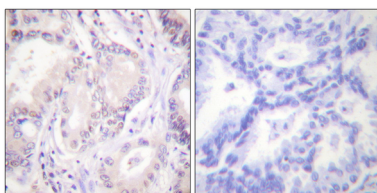
## Research Area

Cell\_Cycle\_G1S;Cell\_Cycle\_G2M\_DNA;

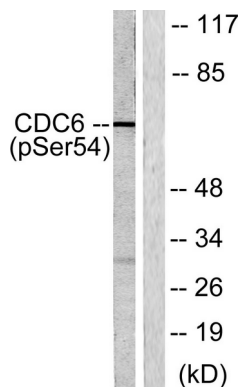
## Image Data



Enzyme-Linked Immunosorbent Assay ( Phospho-ELISA ) for Immunogen Phosphopeptide (Phospho-left) and Non-Phosphopeptide (Phospho-right) , using CDC6 (Phospho-Ser54) Antibody



Immunohistochemistry analysis of paraffin-embedded human lung carcinoma, using CDC6 (Phospho-Ser54) Antibody. The picture on the right is blocked with the phospho peptide.



Western blot analysis of lysates from COS7 cells treated with EGF 200ng/ml 30 ' , using CDC6 (Phospho-Ser54) Antibody. The lane on the right is blocked with the phospho peptide.