

---

**Product Name: CD50 (phospho Ser518) Rabbit Polyclonal Antibody****Catalog #: APRab04407**

For research use only.

**Summary**

<b>Description</b>	Rabbit polyclonal Antibody
<b>Host</b>	Rabbit
<b>Application</b>	WB,ELISA
<b>Reactivity</b>	Human,Rat,Mouse
<b>Conjugation</b>	Unconjugated
<b>Modification</b>	Phosphorylated
<b>Isotype</b>	IgG
<b>Clonality</b>	Polyclonal
<b>Form</b>	Liquid
<b>Concentration</b>	1mg/ml
<b>Storage</b>	Aliquot and store at -20°C (valid for 12 months). Avoid freeze/thaw cycles.
<b>Shipping</b>	Ice bags
<b>Buffer</b>	Liquid in PBS containing 50% glycerol, 0.5% protective protein and 0.02% New type preservative N.
<b>Purification</b>	Affinity purification

**Application**

<b>Dilution Ratio</b>	WB 1:500-1:2000,ELISA 1:20000-1:40000
<b>Molecular Weight</b>	42-60kDa

**Antigen Information**

<b>Gene Name</b>	ICAM3
<b>Alternative Names</b>	ICAM3; Intercellular adhesion molecule 3; ICAM-3; CDw50; ICAM-R; CD antigen CD50
<b>Gene ID</b>	3385.0
<b>SwissProt ID</b>	P32942
<b>Immunogen</b>	The antiserum was produced against synthesized peptide derived from human CD50/ICAM-3 around the phosphorylation site of Ser518. AA range:484-533

**Background**

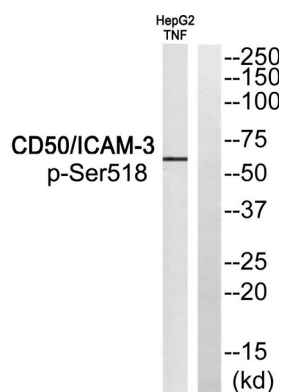
The protein encoded by this gene is a member of the intercellular adhesion molecule (ICAM) family. All ICAM proteins are type I

transmembrane glycoproteins, contain 2-9 immunoglobulin-like C2-type domains, and bind to the leukocyte adhesion LFA-1 protein. This protein is constitutively and abundantly expressed by all leucocytes and may be the most important ligand for LFA-1 in the initiation of the immune response. It functions not only as an adhesion molecule, but also as a potent signalling molecule. Alternative splicing results in multiple transcript variants encoding different isoforms. [provided by RefSeq, Feb 2016],function:ICAM proteins are ligands for the leukocyte adhesion protein LFA-1 (integrin alpha-L/beta-2). ICAM3 is also a ligand for integrin alpha-D/beta-2.,online information:ICAM-3,PTM:N-glycosylated; glycans consist of a mixture of tri- and tetra-antennary complex-type chains and high-mannose chains.,PTM:Upon stimulation by a physiologic stimuli becomes rapidly and transiently phosphorylated on serine residues.,similarity:Belongs to the immunoglobulin superfamily. ICAM family.,similarity:Contains 5 Ig-like C2-type (immunoglobulin-like) domains.,

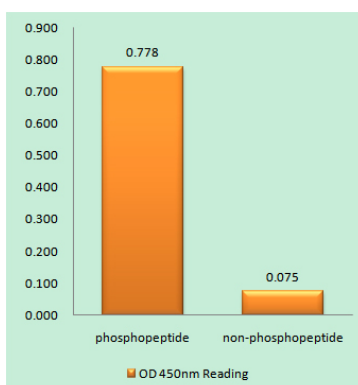
## Research Area

Cell adhesion molecules (CAMs);

## Image Data



Western blot analysis of CD50/ICAM-3 (Phospho-Ser518) Antibody. The lane on the right is blocked with the CD50/ICAM-3 (Phospho-Ser518) peptide.



Enzyme-Linked Immunosorbent Assay ( Phospho-ELISA ) for Immunogen Phosphopeptide (Phospho-left) and Non-Phosphopeptide (Phospho-right) , using CD50/ICAM-3 (Phospho-Ser518) Antibody