
Product Name: CD32 (phospho Tyr292) Rabbit Polyclonal Antibody**Catalog #: APRab04401**

For research use only.

Summary

Description	Rabbit polyclonal Antibody
Host	Rabbit
Application	WB,ELISA
Reactivity	Human,Mouse,Rat
Conjugation	Unconjugated
Modification	Phosphorylated
Isotype	IgG
Clonality	Polyclonal
Form	Liquid
Concentration	1mg/ml
Storage	Aliquot and store at -20°C (valid for 12 months). Avoid freeze/thaw cycles.
Shipping	Ice bags
Buffer	Liquid in PBS containing 50% glycerol, 0.5% protective protein and 0.02% New type preservative N.
Purification	Affinity purification

Application

Dilution Ratio	WB 1:500-1:2000,ELISA 1:5000-1:20000
Molecular Weight	32kDa

Antigen Information

Gene Name	FCGR2B
Alternative Names	FCGR2B; CD32; FCG2; IGFR2; Low affinity immunoglobulin gamma Fc region receptor II-b; IgG Fc receptor II-b; CDw32; Fc-gamma RII-b; Fc-gamma-RIIb; FcRII-b; CD antigen CD32
Gene ID	2213.0
SwissProt ID	P31994
Immunogen	The antiserum was produced against synthesized peptide derived from human CD32 around the phosphorylation site of Tyr292. AA range:258-307

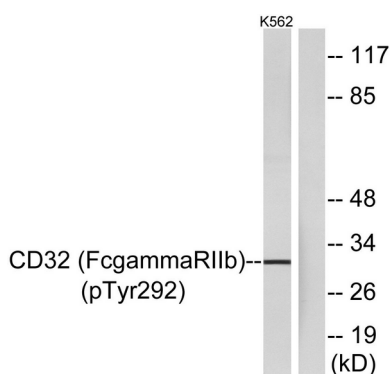
Background

The Fc fragment of IgG receptor IIb encoded by FCGR2B is a low affinity receptor for the Fc region of immunoglobulin gamma complexes. The encoded protein is involved in the phagocytosis of immune complexes and in the regulation of antibody production by B-cells. Variations in this gene may increase susceptibility to systemic lupus erythematosus (SLE). Several transcript variants encoding different isoforms have been found for this gene. immune response,

Research Area

B_Cell_Antigen;Fc gamma R-mediated phagocytosis;Systemic lupus erythematosus;

Image Data



Western blot analysis of lysates from K562 cells treated with PMA 125ng/ml 30', using CD32 (Phospho-Tyr292) Antibody. The lane on the right is blocked with the phospho peptide.