
Product Name: Casein Kinase I α (phospho Tyr321) Rabbit Polyclonal Antibody**Catalog #: APRab04364**

For research use only.

Summary

Description	Rabbit polyclonal Antibody
Host	Rabbit
Application	WB,IHC,ICC/IF,ELISA
Reactivity	Human,Mouse,Rat
Conjugation	Unconjugated
Modification	Phosphorylated
Isotype	IgG
Clonality	Polyclonal
Form	Liquid
Concentration	1mg/ml
Storage	Aliquot and store at -20°C (valid for 12 months). Avoid freeze/thaw cycles.
Shipping	Ice bags
Buffer	Liquid in PBS containing 50% glycerol, 0.5% protective protein and 0.02% New type preservative N.
Purification	Affinity purification

Application

Dilution Ratio	WB 1:500-1:2000,IHC 1:100-1:300,ICC/IF 1:50-1:200,ELISA 1:5000-1:10000
Molecular Weight	35kDa

Antigen Information

Gene Name	CSNK1A1
Alternative Names	CSNK1A1; Casein kinase I isoform alpha; CKI-alpha; CK1
Gene ID	1452.0
SwissProt ID	P48729
Immunogen	The antiserum was produced against synthesized peptide derived from human Casein Kinase I alpha around the phosphorylation site of Tyr321. AA range:287-336

Background

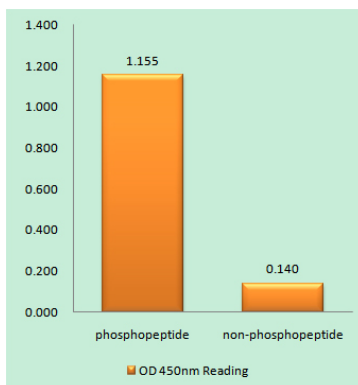
catalytic activity:ATP + a protein = ADP + a phosphoprotein.,function:Casein kinases are operationally defined by their

preferential utilization of acidic proteins such as caseins as substrates. It can phosphorylate a large number of proteins. Participates in Wnt signaling. Phosphorylates CTNNB1 on 'Ser-45', similarity: Belongs to the protein kinase superfamily, similarity: Belongs to the protein kinase superfamily. CK1 Ser/Thr protein kinase family. Casein kinase I subfamily, similarity: Contains 1 protein kinase domain, subunit: Monomer. Interacts with the Axin complex, catalytic activity: ATP + a protein = ADP + a phosphoprotein, function: Casein kinases are operationally defined by their preferential utilization of acidic proteins such as caseins as substrates. It can phosphorylate a large number of proteins. Participates in Wnt signaling. Phosphorylates CTNNB1 on 'Ser-45', similarity: Belongs to the protein kinase superfamily, similarity: Belongs to the protein kinase superfamily. CK1 Ser/Thr protein kinase family. Casein kinase I subfamily, similarity: Contains 1 protein kinase domain, subunit: Monomer. Interacts with the Axin complex,

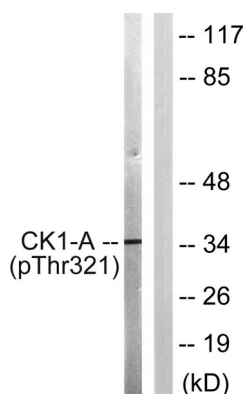
Research Area

WNT; WNT-T CELL; Hedgehog;

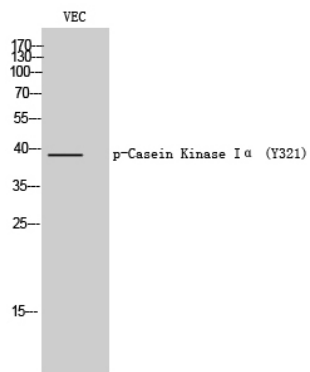
Image Data



Enzyme-Linked Immunosorbent Assay (Phospho-ELISA) for Immunogen Phosphopeptide (Phospho-left) and Non-Phosphopeptide (Phospho-right) , using Casein Kinase I alpha (Phospho-Tyr321) Antibody



Western blot analysis of lysates from HUVEC cells, using Casein Kinase I alpha (Phospho-Tyr321) Antibody. The lane on the right is blocked with the phospho peptide.



Western Blot analysis of VEC cells using Phospho-Casein Kinase I α (Y321) Polyclonal Antibody