

**Product Name: C/EBP  $\epsilon$  (phospho Thr74) Rabbit Polyclonal Antibody****Catalog #: APRab04342**

For research use only.

**Summary**

<b>Description</b>	Rabbit polyclonal Antibody
<b>Host</b>	Rabbit
<b>Application</b>	WB,IHC,ICC/IF,ELISA
<b>Reactivity</b>	Human,Rat,Mouse
<b>Conjugation</b>	Unconjugated
<b>Modification</b>	Phosphorylated
<b>Isotype</b>	IgG
<b>Clonality</b>	Polyclonal
<b>Form</b>	Liquid
<b>Concentration</b>	1mg/ml
<b>Storage</b>	Aliquot and store at -20°C (valid for 12 months). Avoid freeze/thaw cycles.
<b>Shipping</b>	Ice bags
<b>Buffer</b>	Liquid in PBS containing 50% glycerol, 0.5% protective protein and 0.02% New type preservative N.
<b>Purification</b>	Affinity purification

**Application**

<b>Dilution Ratio</b>	WB 1:500-1:2000,IHC 1:100-1:300,ICC/IF 1:200-1:1000,ELISA 1:10000-1:20000
<b>Molecular Weight</b>	34kDa

**Antigen Information**

<b>Gene Name</b>	CEBPE
<b>Alternative Names</b>	CEBPE; CCAAT/enhancer-binding protein epsilon; C/EBP epsilon
<b>Gene ID</b>	1053.0
<b>SwissProt ID</b>	Q15744
<b>Immunogen</b>	The antiserum was produced against synthesized peptide derived from human C/EBP-epsilon around the phosphorylation site of Thr74. AA range:40-89

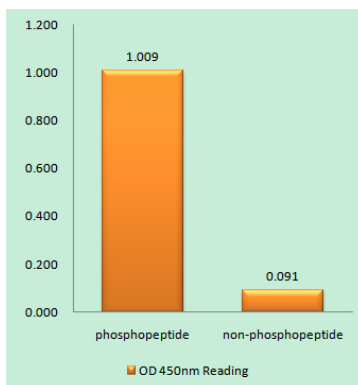
**Background**

The protein encoded by this gene is a bZIP transcription factor which can bind as a homodimer to certain DNA regulatory

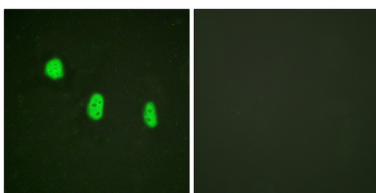
regions. It can also form heterodimers with the related protein CEBP-delta. The encoded protein may be essential for terminal differentiation and functional maturation of committed granulocyte progenitor cells. Mutations in this gene have been associated with Specific Granule Deficiency, a rare congenital disorder. Multiple variants of this gene have been described, but the full-length nature of only one has been determined. [provided by RefSeq, Jul 2008],function:C/EBP are DNA-binding proteins that recognize two different motifs: the CCAAT homology common to many promoters and the enhanced core homology common to many enhancers.,online information:CEBPE mutation db,PTM:Phosphorylated.,similarity:Belongs to the bZIP family. C/EBP subfamily.,similarity:Contains 1 bZIP domain.,subunit:Binds DNA as a dimer and can form stable heterodimers with C/EBP delta.,tissue specificity:Strongest expression occurs in promyelocyte and late-myeloblast-like cell lines.,

## Research Area

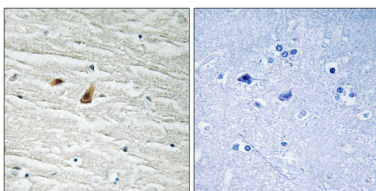
## Image Data



Enzyme-Linked Immunosorbent Assay ( Phospho-ELISA ) for Immunogen Phosphopeptide (Phospho-left) and Non-Phosphopeptide (Phospho-right) , using C/EBP-epsilon (Phospho-Thr74) Antibody



Immunofluorescence analysis of HeLa cells, using C/EBP-epsilon ( Phospho-Thr74) Antibody. The picture on the right is blocked with the phospho peptide.



Immunohistochemistry analysis of paraffin-embedded human brain, using C/EBP-epsilon (Phospho-Thr74) Antibody. The picture on the right is blocked with the phospho peptide.

